

minor third

michael winter (1a, 2012)

for piano

in the middle of the instrument's range

sustain pedal down throughout

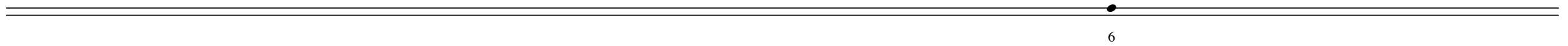
20 seconds per system; the noteheads are spaced proportional to time at a high resolution

generally clear and not very loud, numbers below notes or dyads indicate dynamic between very soft (1) and medium loud (8)

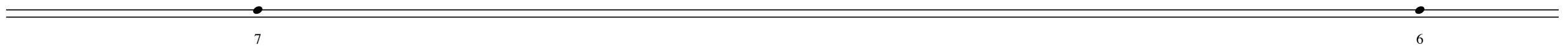
(recording of initial performance which is available upon request can be used to determine the dynamic range)

preferably in a rather dark setting; with a very gradual, natural and continuous shift of setting; perhaps at sunrise

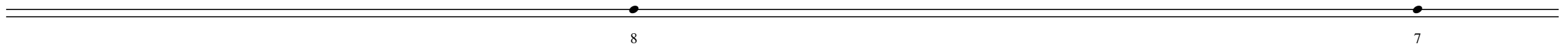
0:00



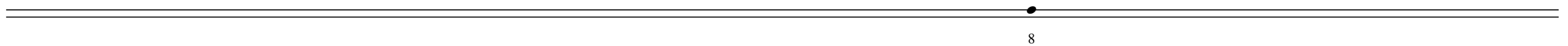
0:20



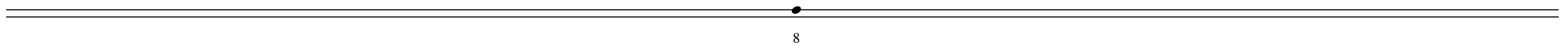
0:40



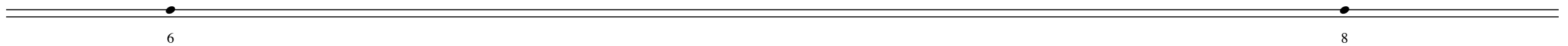
1:00



1:20



1:40



2

2:00

7

2:20

6

6

2:40

7

7

8

8

3:00

6

6

3:20

7

7

3:40

4:00

4:20

7

7

6

6

5

5

4:40

5

5

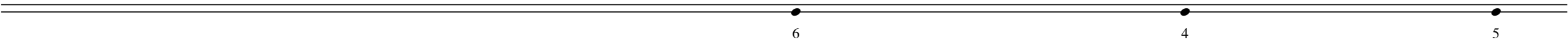
3

3

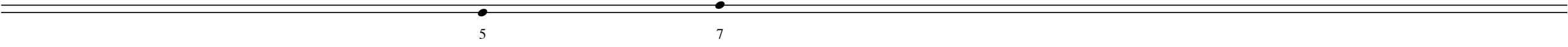
5

5

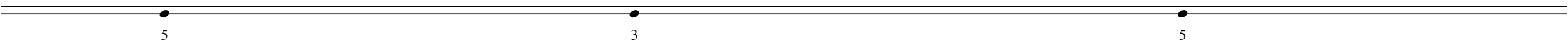
5:00



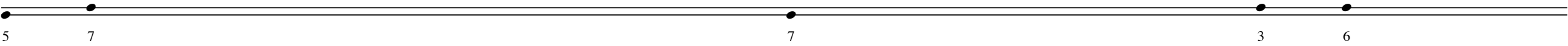
5:20



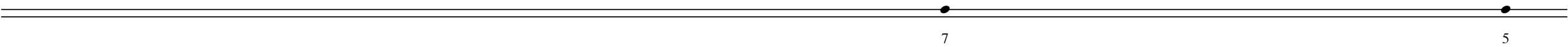
5:40



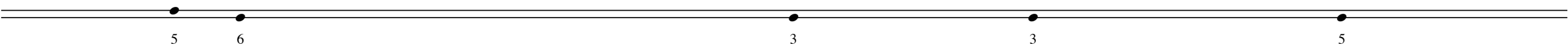
6:00



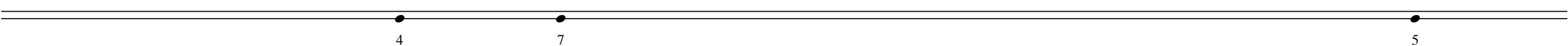
6:20



6:40



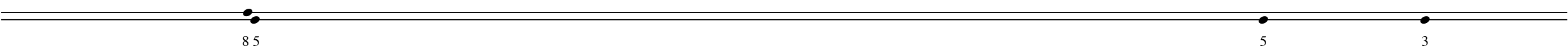
7:00



7:20

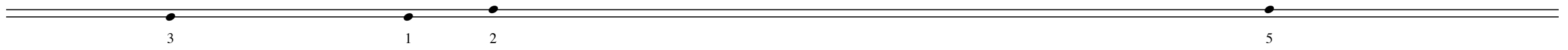


7:40

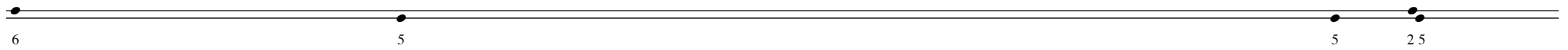


4

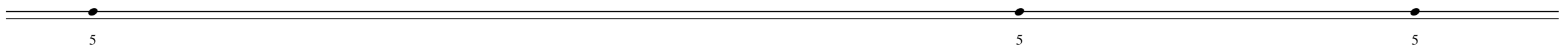
8:00



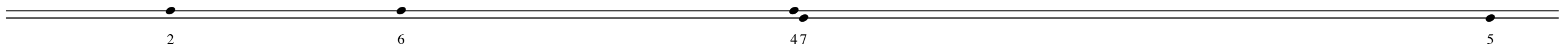
8:20



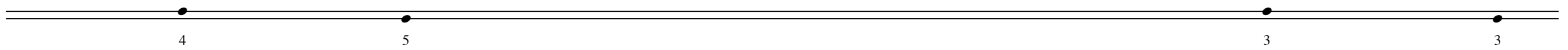
8:40



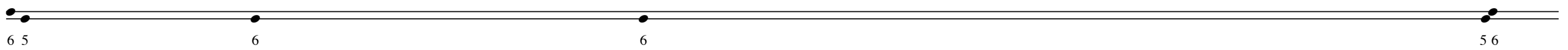
9:00



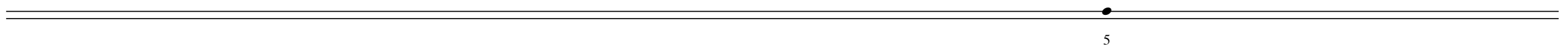
9:20



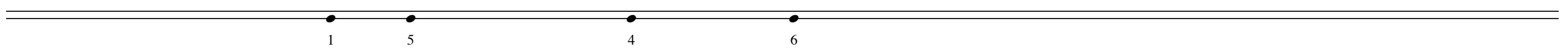
9:40



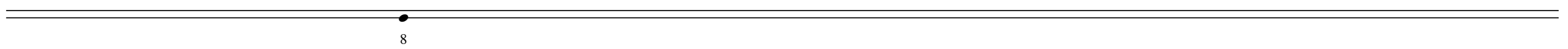
10:00

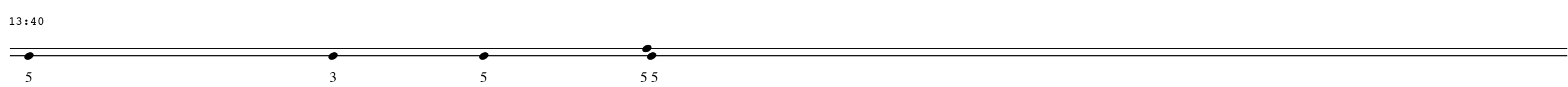
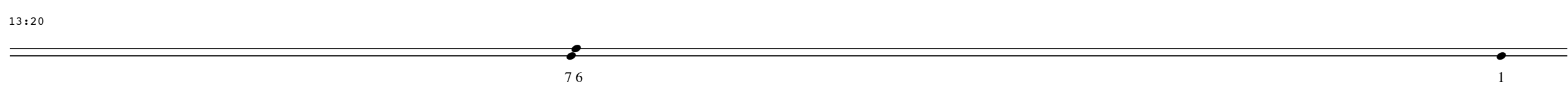
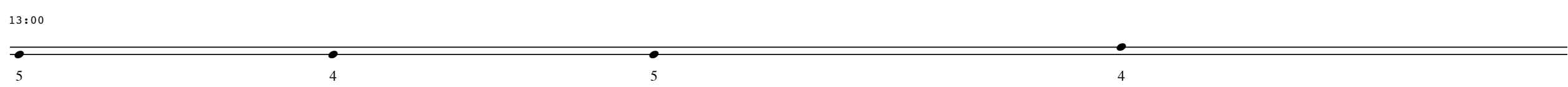
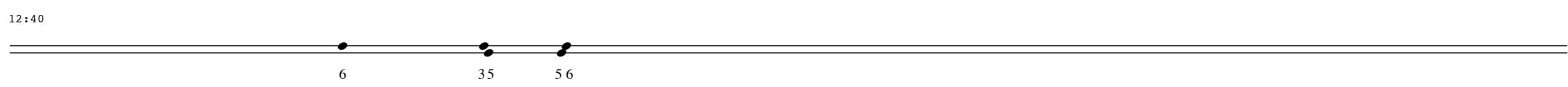
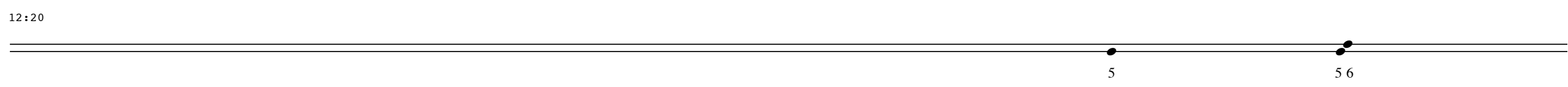
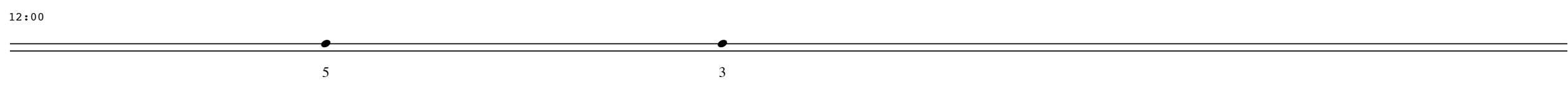
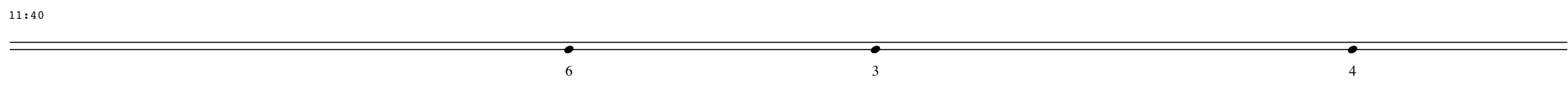
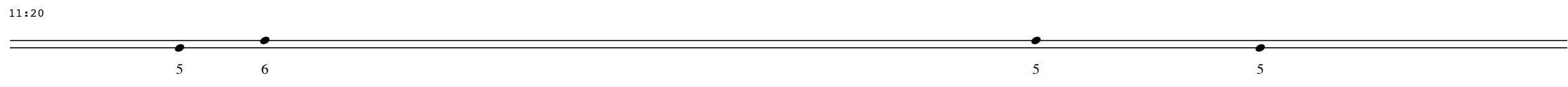
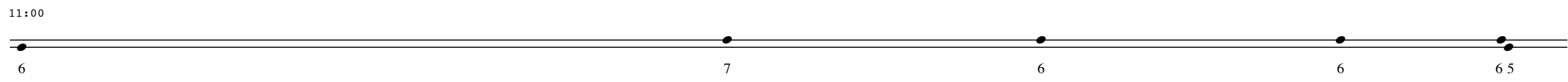


10:20



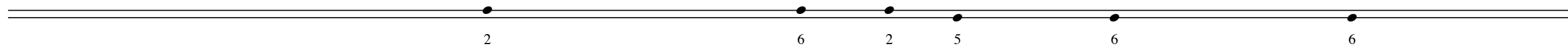
10:40



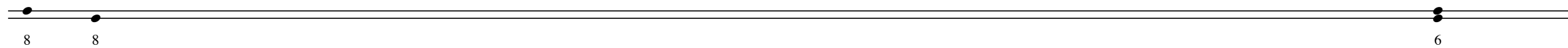


6

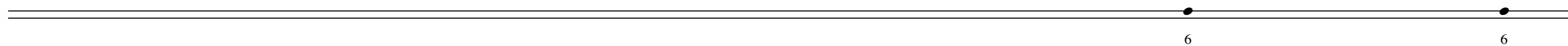
14:00



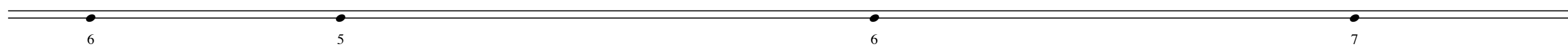
14:20



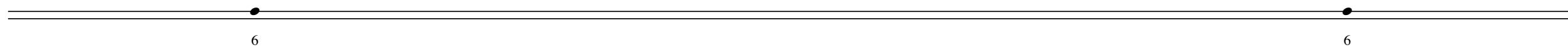
14:40



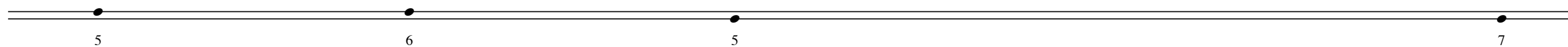
15:00



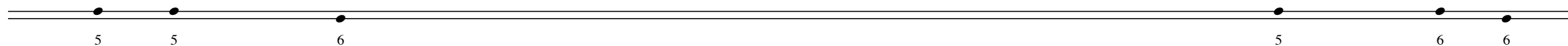
15:20



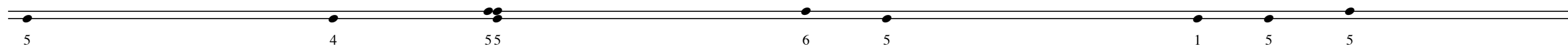
15:40



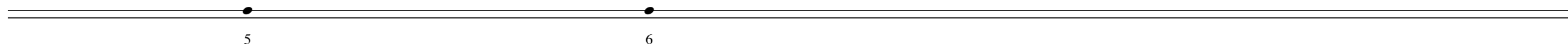
16:00

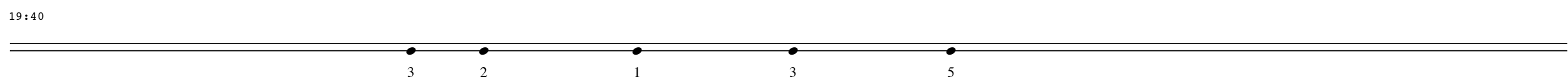
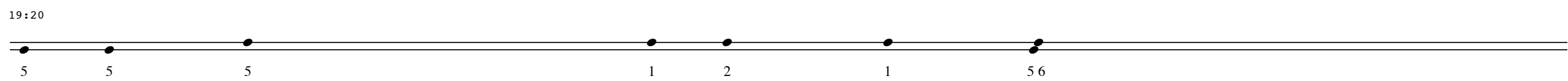
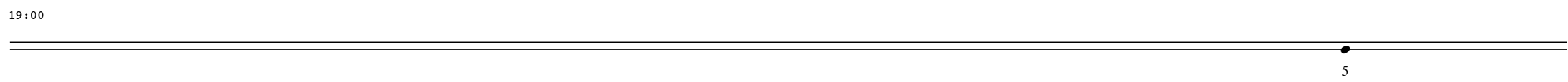
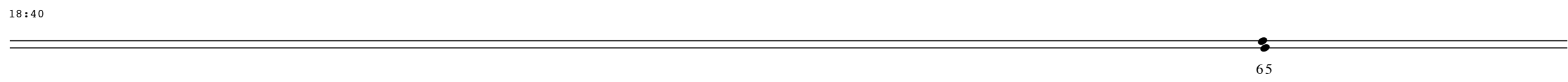
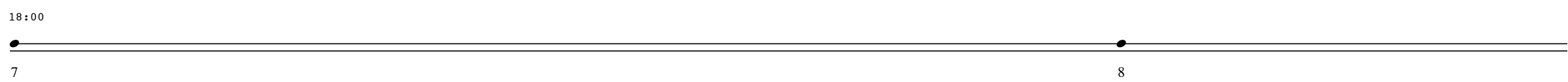
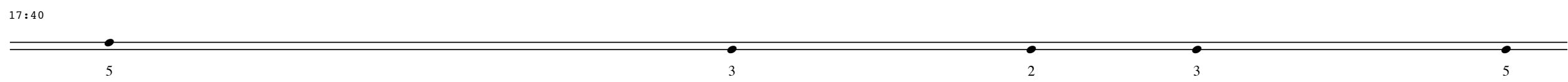
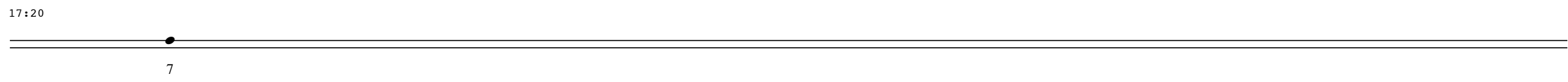
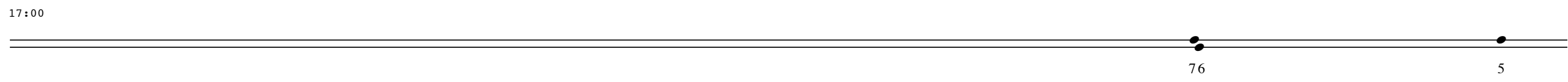


16:20



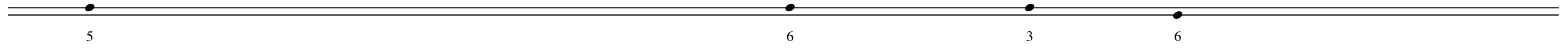
16:40



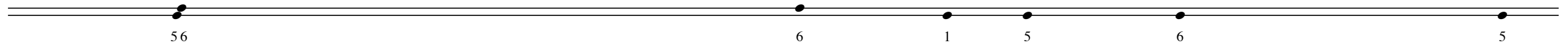


8

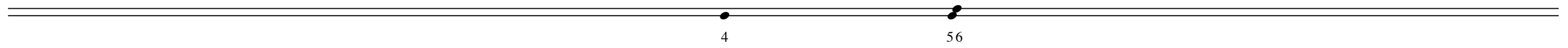
20:00



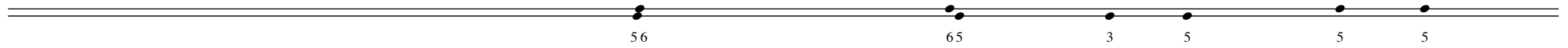
20:20



20:40



21:00



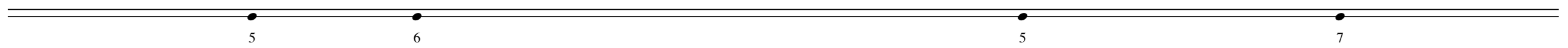
21:20



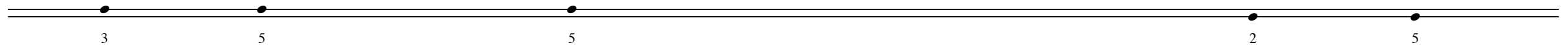
21:40



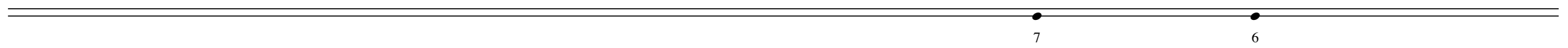
22:00

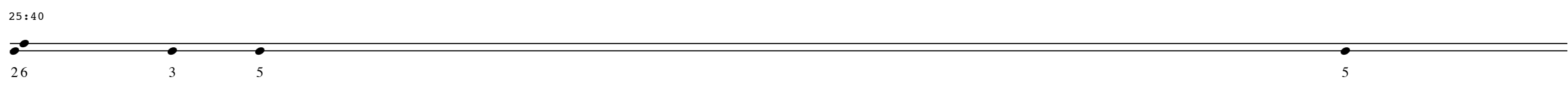
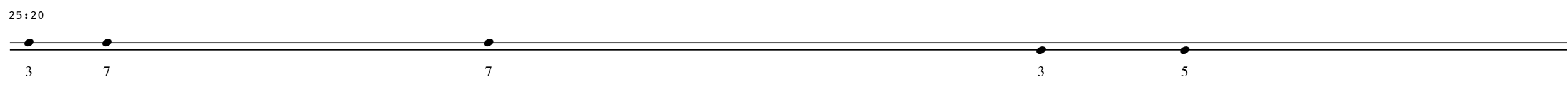
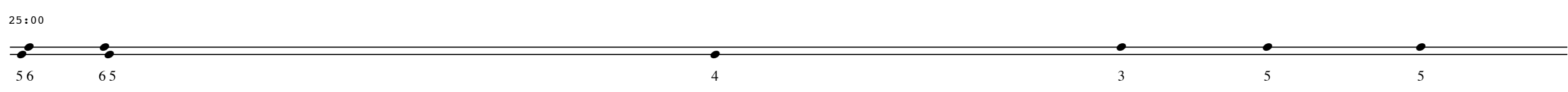
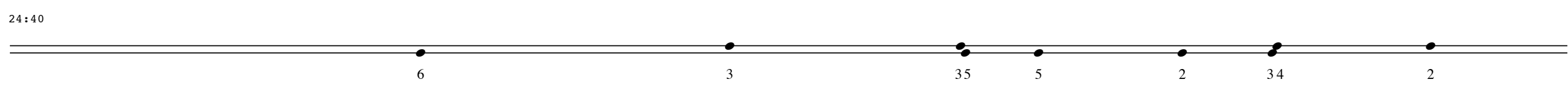
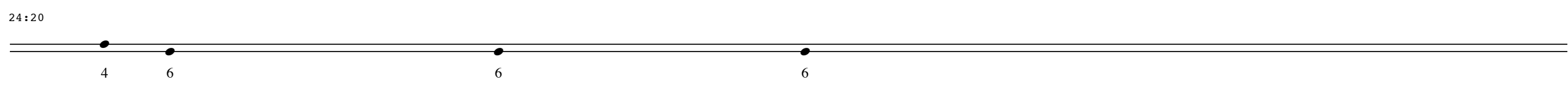
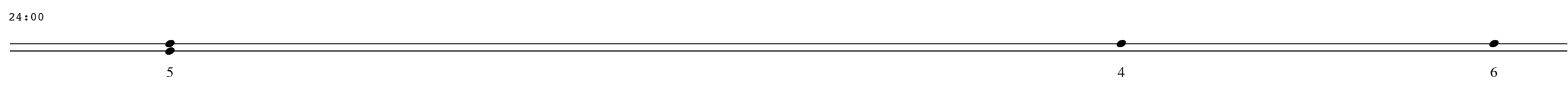
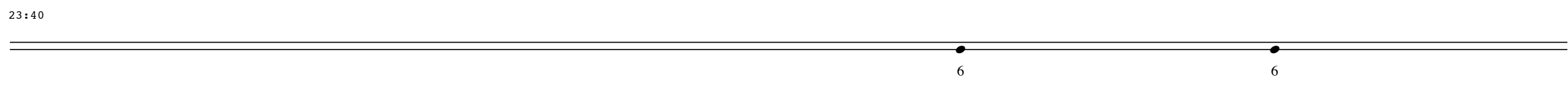
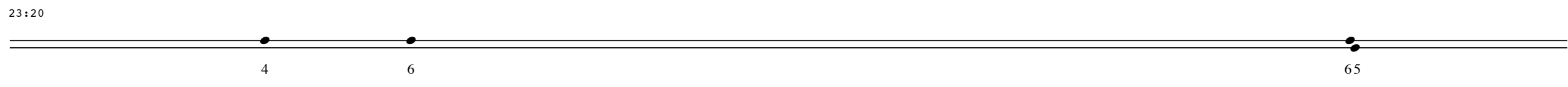
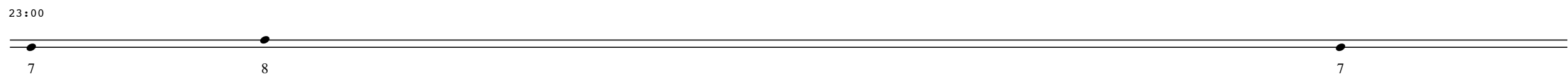


22:20



22:40





10

26:00



6



7



5

26:20



7



5



35



35



5



5



1

26:40

27:00



7

27:20



6

27:40



5



5



5

28:00



2



2



6

28:20



6

28:40

29:00

5

76

29:20

65

29:40

5

3

2

3

5

30:00

4

3

65

30:20

6

3

5

5

3

5

30:40

35

5

3

5

5

6

31:00

7

4

3

5

31:20

8

31:40

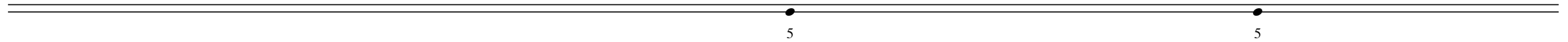
7

5

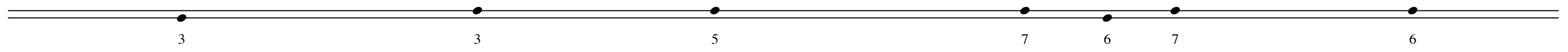
33

12

32:00



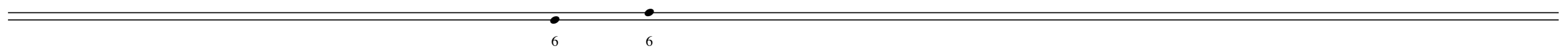
32:20



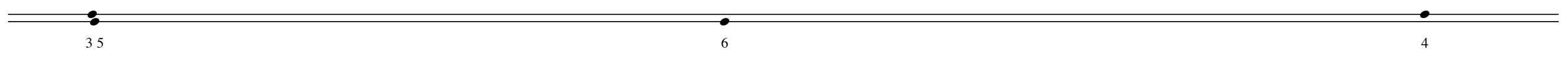
32:40



33:00



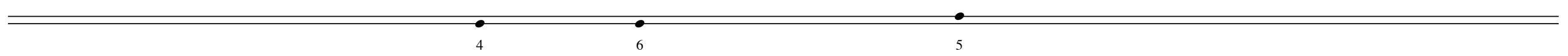
33:20



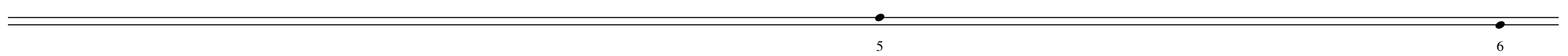
33:40



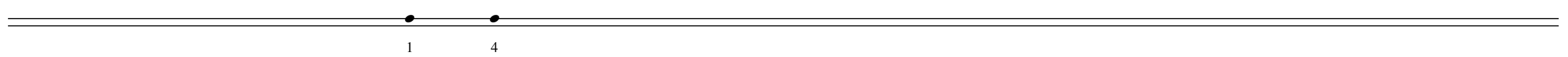
34:00



34:20



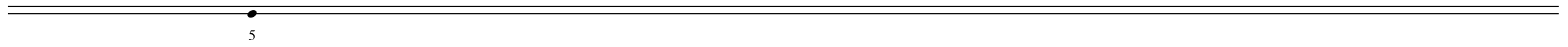
34:40



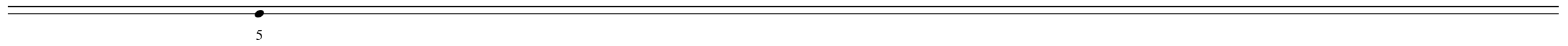
35:00



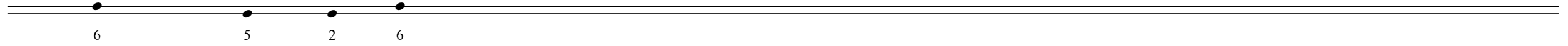
35:20



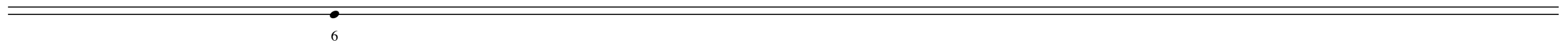
35:40



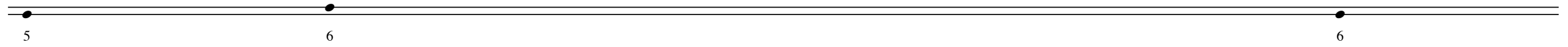
36:00



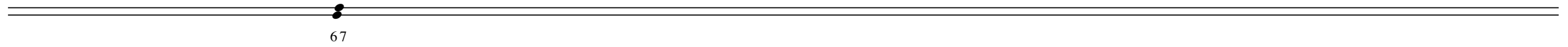
36:20



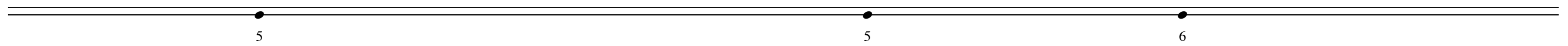
36:40



37:00



37:20



37:40

