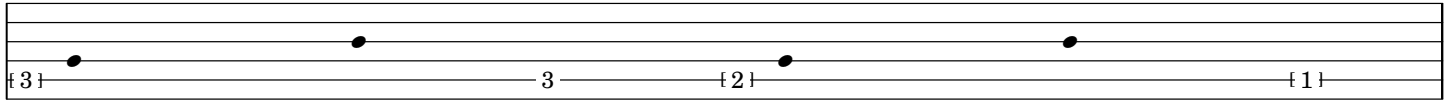


ostinato and interrupt

michael winter (mexico city, mx; 2017)
version generated: 2017.08.23

percussion

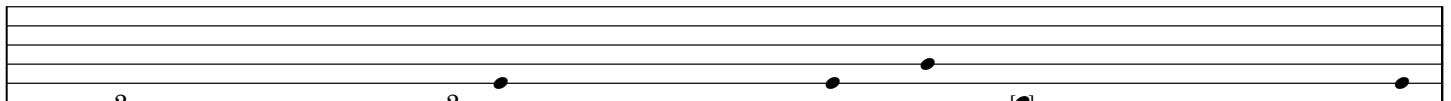
0'12"



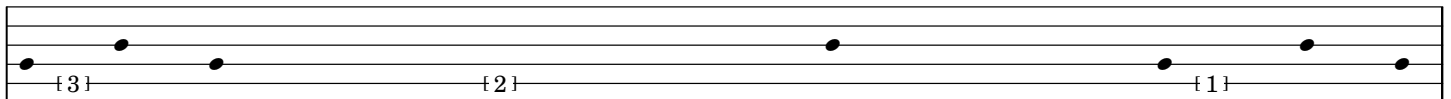
0'24"



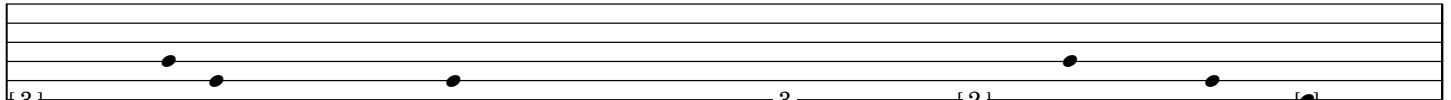
0'36"



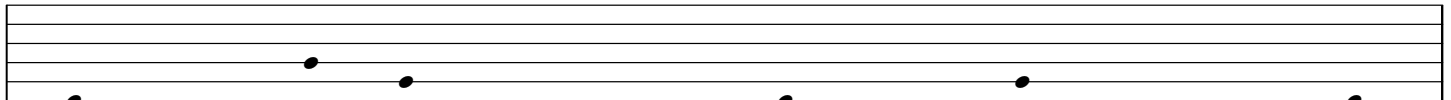
0'48"



1'00"

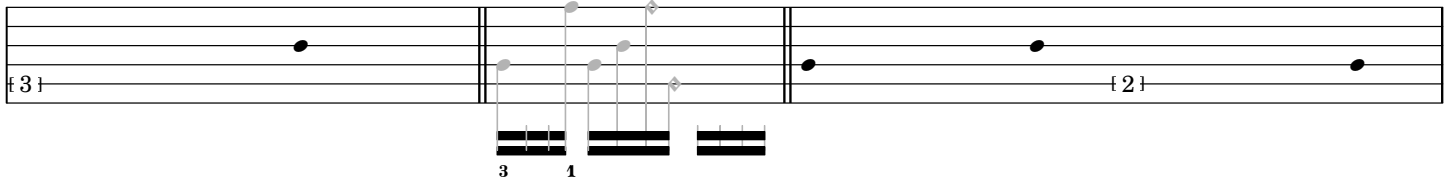


1'12"

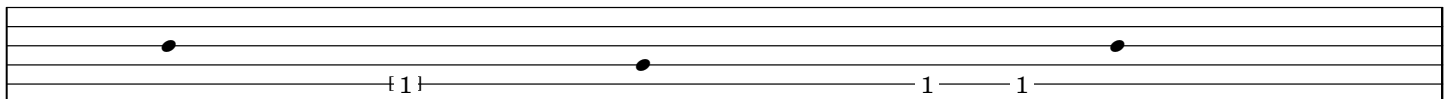


1'24"

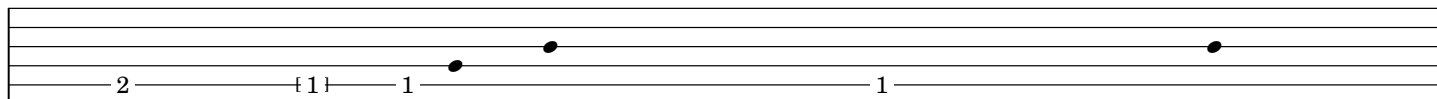
1'28"



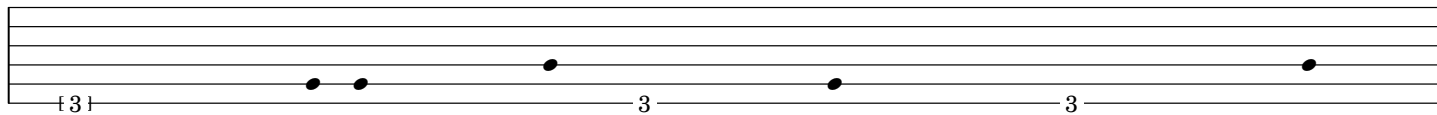
1'36"



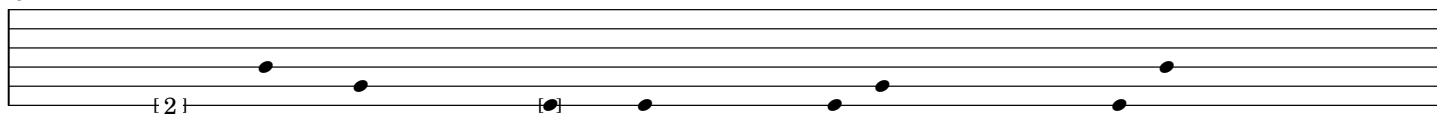
3'24"



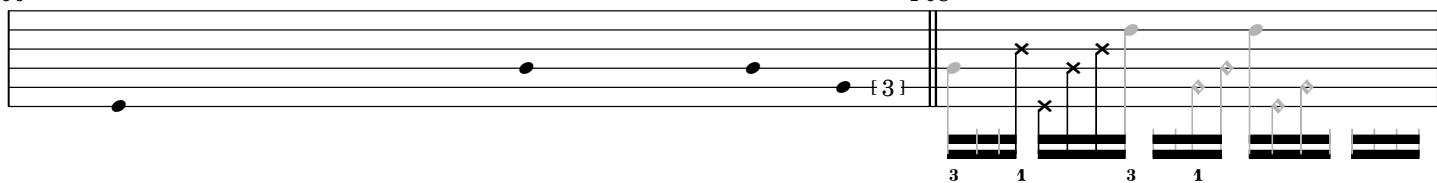
3'36"



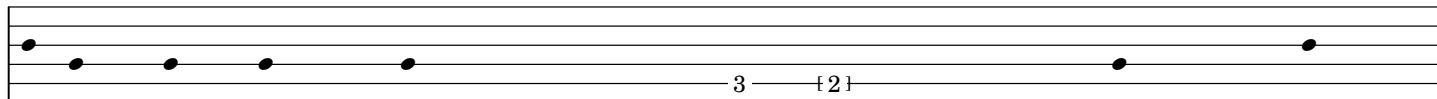
3'48"



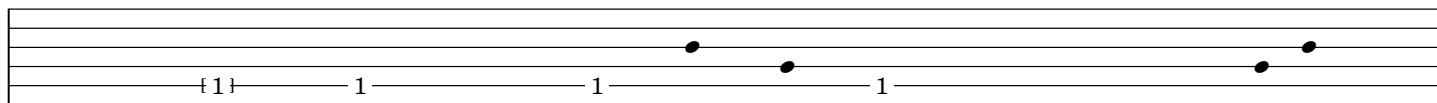
4'00"



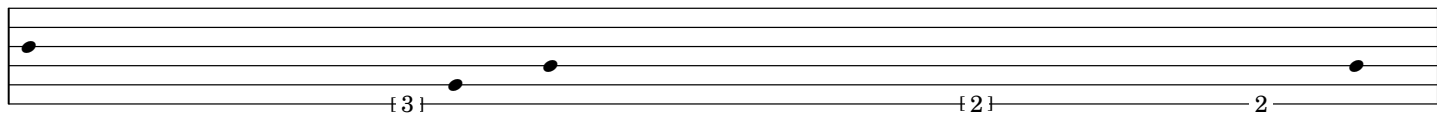
4'12"



4'24"



4'36"



4'48"

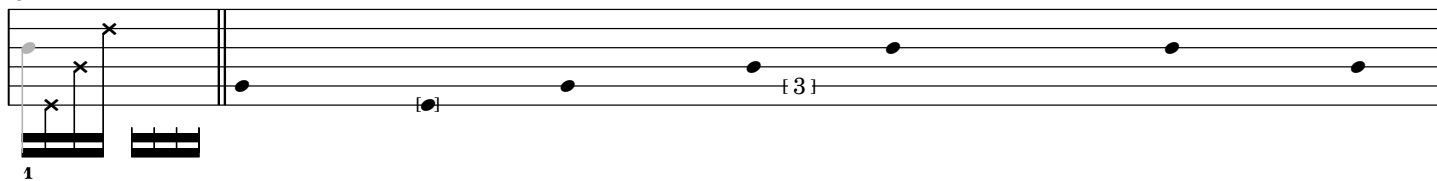


Diagram of a 10-foot long instrument. The left half is labeled 5'00" and the right half is labeled 5'04". The left half contains a bracket labeled { 2 } and a black dot. The right half contains a black dot and a bracket labeled 2. Below the center, there are two sets of three horizontal lines, with a '1' below the first set.

5'12"

A musical staff with five lines. The first line is empty. The second line has a single eighth note. The third line has a single eighth note. The fourth line has a single eighth note. The fifth line has a single eighth note. The staff is divided into two measures by a vertical bar line. The first measure contains the first four notes, and the second measure contains the fifth note. The notes are all eighth notes, suggesting a tempo of 120 beats per minute.

5'36"

3 { 2 }

5'44"

1 2 1 3 1 3

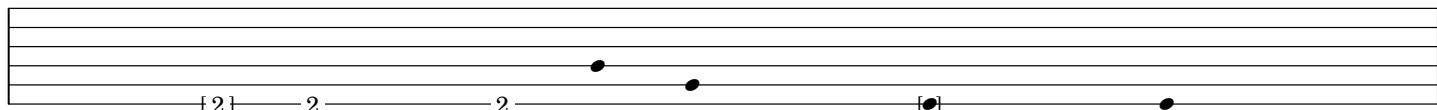
[illegible]

6'00"

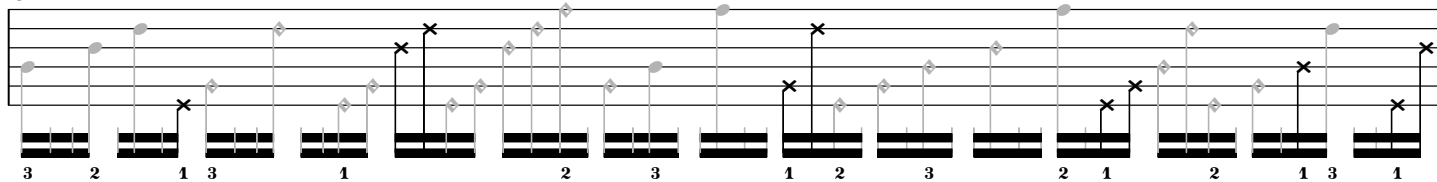
A musical staff with five lines. The notation includes: a quarter note on the second line, a quarter note on the first line followed by the figured bass symbol {3}, a quarter note on the second line followed by the figured bass symbol 3, a quarter note on the first line followed by the figured bass symbol 3, and a quarter note on the second line followed by the figured bass symbol {2}.

The musical score for 'The Rose Tree' is presented on a single staff. It begins with a treble clef and a key signature of one flat (B-flat). The tempo is marked 'Allegretto' and the time signature is '3/4'. The score is divided into three measures by double bar lines. The first measure contains a whole note chord of F4, A4, and C5. The second measure contains a whole note chord of F4, A4, and C5, followed by a whole note chord of F4, A4, and C5. The third measure contains a whole note chord of F4, A4, and C5. The score is marked with '6'12"' and '6'16"' above the staff. The first measure is marked with '1' and the second measure with '2'. The third measure is marked with '1'.

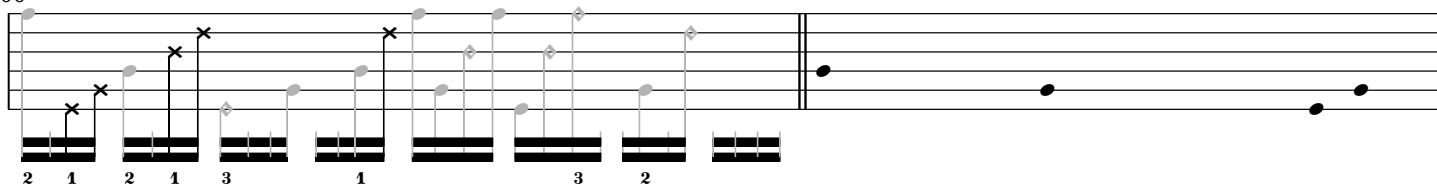
6'36"



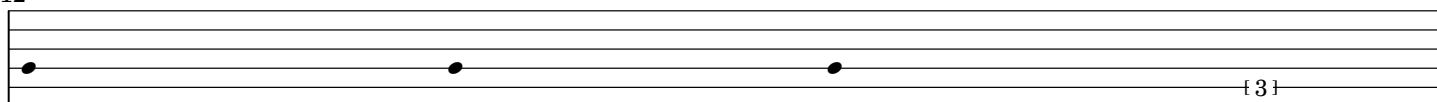
6'48"



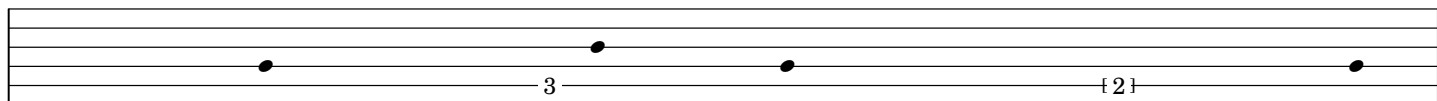
7'00"



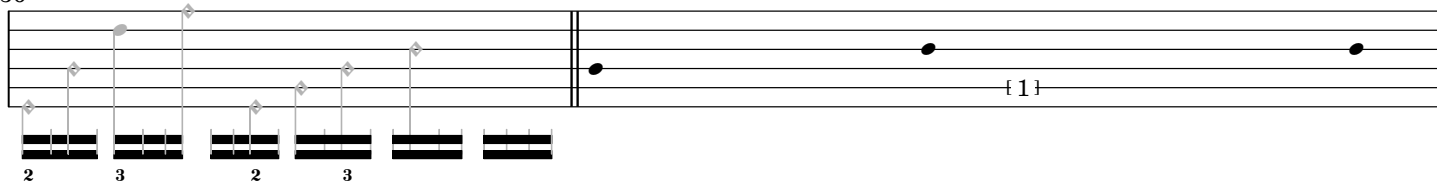
7'12"



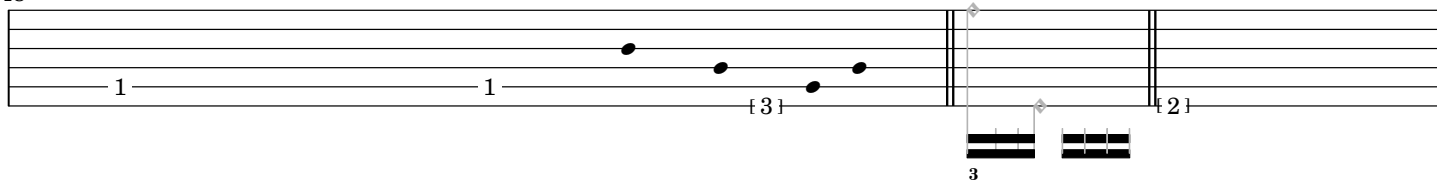
7'24"



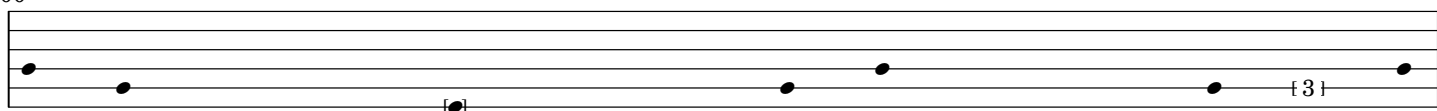
7'36"



7'48"



8'00"



8'12"

Musical notation for 8'12". The staff shows a sequence of notes with fingerings 3, 1, 3, 1, 3, 1. There are 'x' marks above the first, third, and fifth notes. A double bar line is followed by a triplet of three notes, each with a '3' below it.

8'24"

Musical notation for 8'24". The staff shows a sequence of notes with fingerings {2} and 2.

8'36"

8'40"

Musical notation for 8'36" and 8'40". The staff shows a sequence of notes with fingerings {1} and 1, 2, 1, 3, 1, 3, 2, 1, 2, 1, 3. There are 'x' marks above the first, third, fifth, and seventh notes.

8'48"

Musical notation for 8'48". The staff shows a sequence of notes with fingerings {3} and 3.

9'00"

9'04"

Musical notation for 9'00" and 9'04". The staff shows a sequence of notes with fingerings {2} and 1, 3, 1, 2. There are 'x' marks above the first, third, and fifth notes. A double bar line is followed by a triplet of three notes, each with a '2' below it.

9'12"

Musical notation for 9'12". The staff shows a sequence of notes.

9'24"

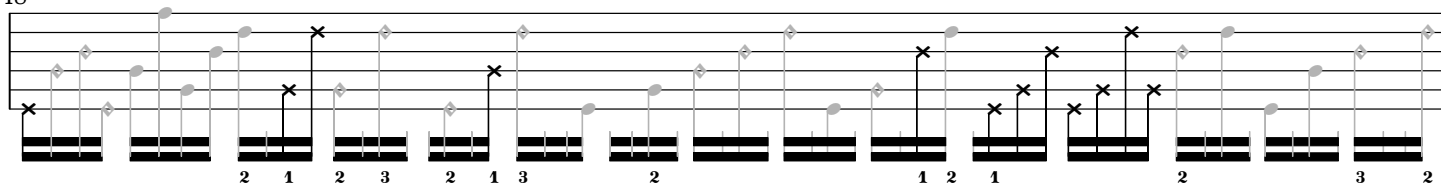
Musical notation for 9'24". The staff shows a sequence of notes.

9'36"

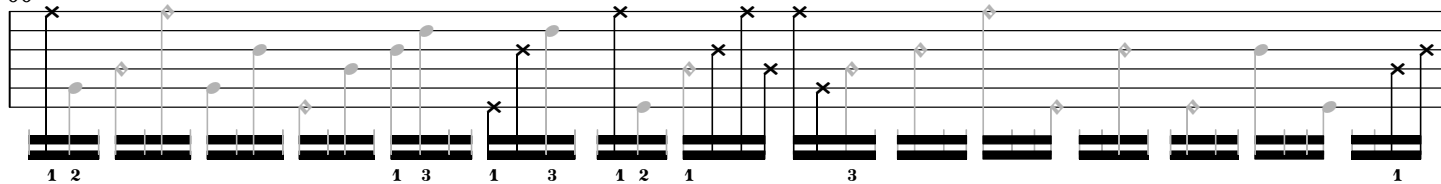
9'44"

Musical notation for 9'36" and 9'44". The staff shows a sequence of notes with fingerings {3} and 3. A double bar line is followed by a sequence of notes with fingerings 3, 1, 2, 1. There are 'x' marks above the first, third, and fifth notes.

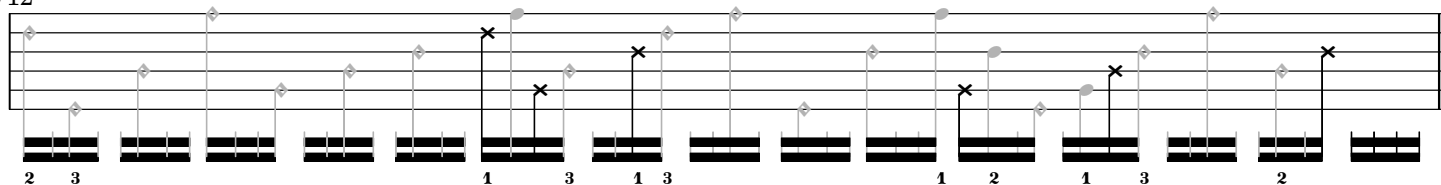
9'48"



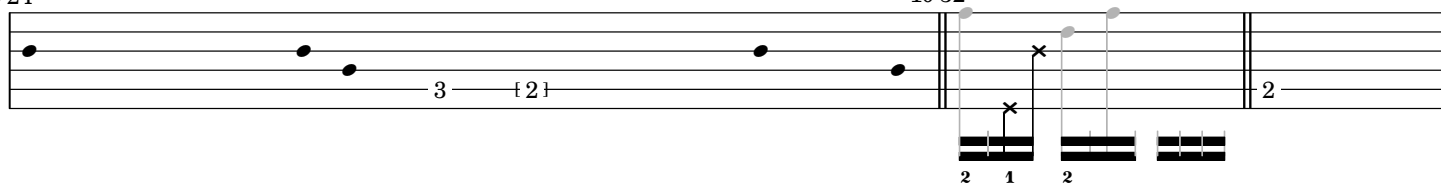
10'00"



10'12"

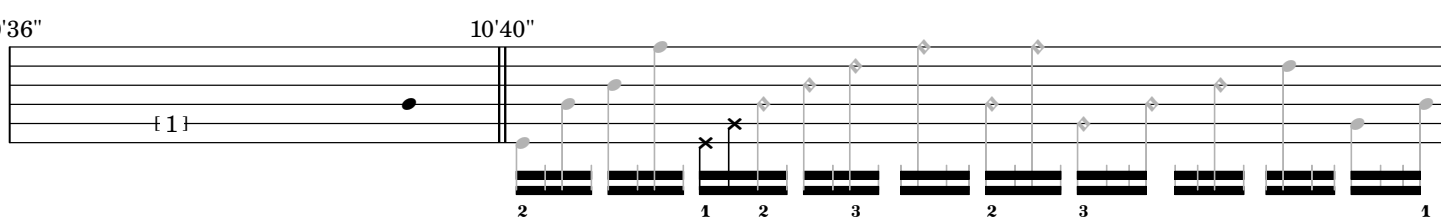


10'24"



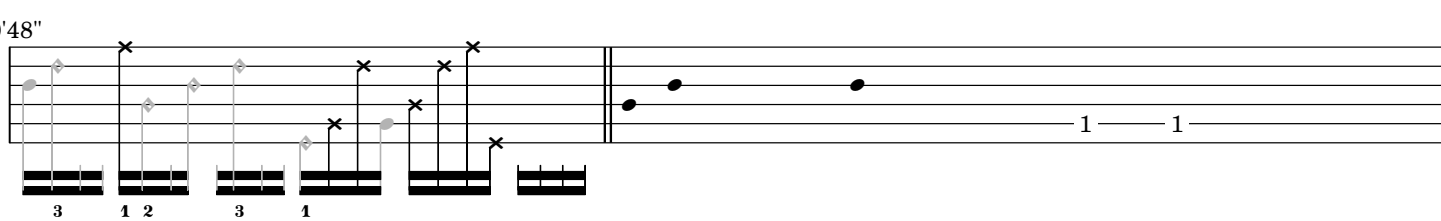
10'32"

10'36"

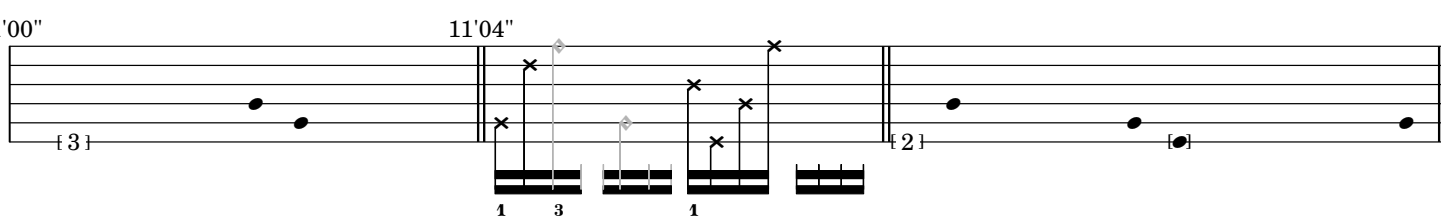


10'40"

10'48"

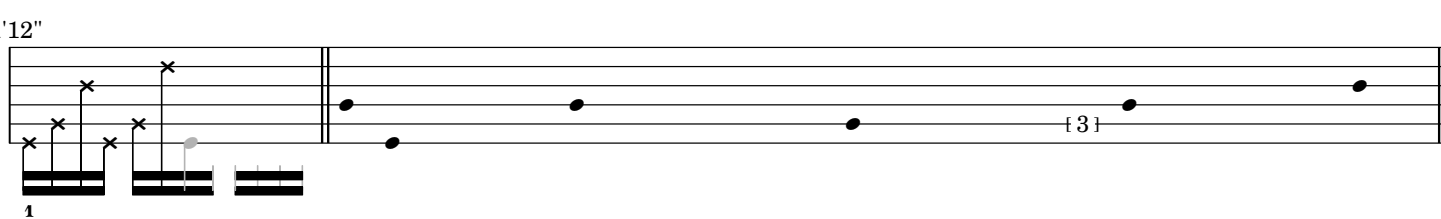


11'00"



11'04"

11'12"



11'24"

Musical notation for 11'24". The staff shows a sequence of notes with fingerings: 2, 1, 3, 2, 3, 2, 1, 3, 1, 2, 1. There are 'x' marks above some notes. The notation ends with a double bar line and a final note.

11'36"

Musical notation for 11'36". The staff shows a sequence of notes with fingerings: 1, 2, 1. There are 'x' marks above some notes. The notation ends with a double bar line and a final note.

11'44"

11'48"

Musical notation for 11'48". The staff shows a sequence of notes with fingerings: 3, {2}. There are 'x' marks above some notes. The notation ends with a double bar line and a final note.

12'00"

Musical notation for 12'00". The staff shows a sequence of notes with fingerings: 1, 2, 1, 2, 1, 2, 1, 2, 2, 1, 2, 1. There are 'x' marks above some notes. The notation ends with a double bar line and a final note.

12'12"

Musical notation for 12'12". The staff shows a sequence of notes with fingerings: {3}. There are 'x' marks above some notes. The notation ends with a double bar line and a final note.

12'24"

Musical notation for 12'24". The staff shows a sequence of notes with fingerings: 2, 1. There are 'x' marks above some notes. The notation ends with a double bar line and a final note.

12'36"

Musical notation for 12'36". The staff shows a sequence of notes with fingerings: 3, 1, 2, {1}, 1. There are 'x' marks above some notes. The notation ends with a double bar line and a final note.

12'48"

Musical notation for 12'48". The staff shows a sequence of notes with fingerings: 2, 3, 1, 2, 1, 3, 1, 3, 1, 3, 1, 3. There are 'x' marks above some notes. The notation ends with a double bar line and a final note.

13'00"

Musical notation for 13'00". The staff shows a sequence of notes with various accidentals (sharps, naturals, flats) and fingerings (1, 2, 3). The notation includes many 'x' marks above notes, indicating specific techniques or accents. The bottom of the staff shows a series of black bars, likely representing a piano accompaniment or a specific rhythmic pattern.

13'12"

Musical notation for 13'12". The staff shows a sequence of notes with various accidentals and fingerings. The notation includes many 'x' marks above notes. The bottom of the staff shows a series of black bars. A double bar line is present, followed by a measure with a single note and a '1' below it, and another measure with a '3' below it.

13'24"

Musical notation for 13'24". The staff shows a sequence of notes with various accidentals and fingerings. The notation includes many 'x' marks above notes. The bottom of the staff shows a series of black bars.

13'36"

Musical notation for 13'36". The staff shows a sequence of notes with various accidentals and fingerings. The notation includes many 'x' marks above notes. The bottom of the staff shows a series of black bars.

13'48"

Musical notation for 13'48". The staff shows a sequence of notes with various accidentals and fingerings. The notation includes many 'x' marks above notes. The bottom of the staff shows a series of black bars. A double bar line is present, followed by a measure with a '3' below it, and another measure with a '3' below it.

14'00"

Musical notation for 14'00". The staff shows a sequence of notes with various accidentals and fingerings. The notation includes many 'x' marks above notes. The bottom of the staff shows a series of black bars. A double bar line is present, followed by a measure with a '3' below it, and another measure with a '3' below it.

14'12"

Musical notation for 14'12". The staff shows a sequence of notes with various accidentals and fingerings. The notation includes many 'x' marks above notes. The bottom of the staff shows a series of black bars. A double bar line is present, followed by a measure with a '3' below it, and another measure with a '3' below it.

14'24"

Musical notation for 14'24". The staff shows a sequence of notes with various accidentals and fingerings. The notation includes many 'x' marks above notes. The bottom of the staff shows a series of black bars. A double bar line is present, followed by a measure with a '3' below it, and another measure with a '3' below it.

[illegible]