

to kill a monarch

seed: 19800725

michael winter
(berlin, germany; 2021)

1.1

III 1/1 II 1/1 I

+0 +0 +0

1/1 1/1 1/1

$\text{♩} = 60$

I

II

III

*

+41 +16 +4 +0

13/8 6/5 9/8 1/1

-31 +2 -31 +0

III 7/4 3/2 7/4 1/1

⑤

+2 -31

3/2 7/4

1.2

+2

3/2

+4 -49 +2

11/8 9/8 3/2

+16 -49 -31 +41 +2 +4

6/5 11/8 7/4 13/8 3/2 9/8

⑨

-49 +0

11/8 1/1

+0 -49

1/1 11/8

-31 +16 +4 +2 +0

7/4 6/5 9/8 3/2 1/1

+0 -49

III 1/1 11/8 -1.

1.3

Measure 13: I (+4, 9/8), II (+0, 1/1), III (+16, 6/5), * (-31, III 7/4).
 Measure 14: I (+2, 3/2), II (-31, 7/4), III (-49, 13/8), * (+0, 1/1).
 Measure 15: I (+0, 1/1), II (+2, 3/2), III (+2, 9/8), * (+0, 1/1).
 Measure 16: I (+0, 1/1), II (+41, 13/8), III (+4, 9/8), * (+0, 1/1).

1.4

Measure 17: I (+41, 13/8), II (+4, 9/8), III (-49, 11/8), * (+0, 1/1).
 Measure 18: I (+41, 13/8), II (+4, 9/8), III (-49, 11/8), * (+0, 1/1).
 Measure 19: I (+41, 13/8), II (+4, 9/8), III (-49, 11/8), * (+0, 1/1).
 Measure 20: I (+41, 13/8), II (+4, 9/8), III (-49, 11/8), * (+0, 1/1).

1.5

Measure 21: I (-49, 11/8), II (+2, 3/2), III (-31, 7/4), * (+41, 13/8).
 Measure 22: I (+16, 6/5), II (-49, 11/8), III (+4, 9/8), * (+2, 3/2).
 Measure 23: I (-31, 7/4), II (+0, 1/1), III (+0, 1/1), * (+2, 3/2).
 Measure 24: I (+0, 1/1), II (+4, 9/8), III (+0, 1/1), * (+0, 1/1).

(25)

13/8 3/2 1/1 9/8 6/5 7/4 11/8 6/5

(29) 1.6

1/1 6/5 1/1 3/2 1/1 7/4 11/8 13/8 1/1 9/8 3/2

(33) 1.7

13/8 9/8 13/8 7/4 6/5 13/8 1/1 3/2 6/5 11/8 7/4 1/1

37

Staff I: Treble clef, key signature of two flats. Measures 37-40. Time signatures: 3/2, 7/4, 1/1. Accidentals: +2, +0, -31.

Staff II: Bass clef, key signature of two flats. Measures 37-40. Time signatures: 9/8, 7/4. Accidentals: +4, -31.

Staff III: Bass clef, key signature of two flats. Measures 37-40. Time signatures: 3/2, 1/1, 11/8. Accidentals: +2, +0, -49.

Staff *: Treble clef, key signature of two flats. Measures 37-40. Time signatures: 9/8, 13/8. Accidentals: +4, +41.

41

1.8

Staff I: Treble clef, key signature of two flats. Measures 41-44. Time signatures: 3/2, 11/8, 3/2. Accidentals: +2, -49, +2.

Staff II: Bass clef, key signature of two flats. Measures 41-44. Time signatures: 7/4. Accidental: -31.

Staff III: Bass clef, key signature of two flats. Measures 41-44. Time signatures: 3/2, 11/8, 3/2. Accidentals: +2, -31, +4.

Staff *: Treble clef, key signature of two flats. Measures 41-44. Time signatures: 7/4, 9/8. Accidentals: +2, -31, +4.

45

Staff I: Treble clef, key signature of two flats. Measures 45-48. Time signatures: 11/8, 6/5, 13/8, 1/1, 3/2, 7/4, 9/8, 3/2, 11/8. Accidentals: -49, +16, +41, +0, +2, -31, +4, +2, -49.

Staff II: Bass clef, key signature of two flats. Measures 45-48. Time signatures: 1/1, 13/8. Accidentals: +0, +41.

Staff III: Bass clef, key signature of two flats. Measures 45-48. Time signatures: 3/2, 13/8, 6/5. Accidentals: +2, +41, +16.

Staff *: Treble clef, key signature of two flats. Measures 45-48. Time signatures: 6/5, 11/8, 3/2, 6/5. Accidentals: +16, -49, +2, +16.

1.9

49

I

II

III

*

+2

3/2

-31 +4 -49 +2 +0 +16 +41 -49

7/4 9/8 11/8 3/2 1/1 6/5 13/8 11/8

+0

1/1

-31 +2 +0 +41 -49

III 7/4 3/2 1/1 13/8 11/8

1.10

53

I

II

III

*

+16 +41 +0

6/5 13/8 1/1

+0 -31 +2 +4

1/1 7/4 3/2 9/8 6/5

-49 +4 -31

11/8 9/8 7/4

-31 +0 +2

7/4 1/1 3/2 7/4

+0 +2

1/1 3/2

+4

9/8

+2

III 3/2

1.11

57

I

II

III

*

-31 -49 +4

7/4 11/8 9/8

-31 +16 +41

7/4 6/5 13/8

-31 -49 +0 +0 +2

7/4 11/8 1/1 1/1 3/2 7/4

-31 +0

7/4 1/1

+4 +0

9/8 1/1

61

1.12

I

II

III

*

8

The image displays a musical score for the song "The Rose Tree" in 11/8 time. The score is arranged in four staves, labeled I, II, III, and *. Staff I is in treble clef, while staves II, III, and * are in bass clef. The key signature has two flats (B-flat and E-flat). The time signature is 11/8. The score includes various musical notations such as notes, rests, and bar lines. Interval markings are provided for several notes: -49, +2, +0, +4, -31, +41, +0, +41, -31, +16, +16, -31, -49, +41, +4, -49, +4, +41, -49, +4, +41. The score is divided into two systems by a double bar line. The first system ends with a measure containing a whole note and a half note. The second system begins with a measure containing a whole note and a half note. The score is labeled "1.13" in the top right corner.

The image displays a musical score for 'The Great Escape' by The Beatles, featuring four staves (I, II, III, and *) with various musical notations and time signatures.

Staff I: Treble clef, key signature of one flat (B-flat). The melody consists of eighth and quarter notes. Time signatures indicated below the staff are 6/5, 13/8, 7/4, 11/8, 3/2, 6/5, and 1/1. Interval markings above the staff are +16, +41, -31, -49, +2, +16, and +0.

Staff II: Bass clef, key signature of one flat (B-flat). The melody consists of eighth and quarter notes. Time signatures indicated below the staff are 3/2, 9/8, 1/1, and 3/2. Interval markings above the staff are +2, +4, +0, and +2.

Staff III: Bass clef, key signature of one flat (B-flat). The melody consists of eighth and quarter notes. Time signatures indicated below the staff are 3/2 and 6/5. Interval markings above the staff are +2 and +16.

Staff *: Treble clef, key signature of one flat (B-flat). The melody consists of eighth and quarter notes. Time signatures indicated below the staff are 3/2 and 6/5. Interval markings above the staff are +0 and +16.

73 1.14

II: +16, 6/5, -49, -31, +41, 11/8, 7/4, 13/8, 11/8

III: +2, 3/2

*: +16, 6/5

77 1.15

II: +0, +4, -31, -49, +0, +16, +2, 6/5, 3/2, 7/4, 11/8, 1/1, 13/8, 9/8, 7/4, 1/1, 3/2, +16, 6/5

III: +2, 3/2

*: -31, +2, -49, +0, +41, +4, +0, 11/8, 1/1, 13/8, 9/8, 1/1

81

I: +41, +4, -31, -49, 9/8, 13/8, 7/4, 11/8

II: -31, 7/4

III: +41, +0, -31, +16, +4, +2, +0, +4, 13/8, 11/8, 1/1, 13/8, 7/4, 9/8, 6/5, 3/2, 1/1, 9/8

*: -31, 11/8, -49, +2, 3/2

85 1.16

I

II

III

*

-49

11/8

-31

+41

-49

+0

+2

7/4

13/8

11/8

1/1

3/2

The musical score for 'The Rose Tree' is presented in four staves. Staff I (Treble) begins with a treble clef and a key signature of one flat. It contains several measures of music, with numerical annotations +0, +4, 1/1, and 9/8. Staff II (Alto) uses an alto clef and a key signature of one flat, with annotations +41 and 13/8. Staff III (Bass) uses a bass clef and a key signature of one flat, with annotations +0, +41, 1/1, 13/8, and +0. Staff * (Soprano) uses a soprano clef and a key signature of one flat, with annotations -31, +16, -49, +41, -31, and 7/4. The score concludes with a double bar line.

1.17

93

I

II

III

*

8

III^{9/8}

3/2

+2 +0 +41 +4 -49 -31 +16 +2

3/2 1/1 13/8 9/8 11/8 7/4 6/5 3/2

+16 -49

6/5 11/8

-31 +16

7/4 6/5 13/8 1/1

+4 +2

97 1.18

I $\frac{13}{8}$

II $\frac{1}{1}$ $\frac{3}{2}$ $\frac{9}{8}$

III

*

$\frac{13}{8}$ $\frac{1}{1}$ $\frac{9}{8}$

101 1.19

I $\frac{1}{1}$ $\frac{7}{4}$ $\frac{3}{2}$

II

III $\frac{3}{2}$ $\frac{11}{8}$ $\frac{9}{8}$ $\frac{13}{8}$ $\frac{7}{4}$ $\frac{1}{1}$

*

$\frac{6}{5}$ $\frac{9}{8}$ $\frac{1}{1}$ $\frac{7}{4}$ $\frac{11}{8}$

105

I $\frac{9}{8}$ $\frac{6}{5}$ $\frac{1}{1}$ $\frac{3}{2}$ $\frac{7}{4}$

II $\frac{7}{4}$ $\frac{13}{8}$

III $\frac{6}{5}$ $\frac{11}{8}$ $\frac{9}{8}$

*

$\frac{3}{2}$

109 1.20

II: -49 +2 -49 +16 +0 -31 +4
11/8 3/2 11/8 6/5 1/1 7/4 9/8

III: +2 -49
3/2 11/8

*: +16 -49 +0
6/5 11/8 III 1/1

113 1.21

I: +16 +2 -49 +41 +16 +2 +0 +41 +0 -31
6/5 3/2 11/8 13/8 6/5 3/2 1/1 13/8 9/8 1/1 7/4

II: +41
13/8

III: +41 +0
13/8 1/1

*: +4 +41 +16 +2 -31 -49
9/8 13/8 6/5 3/2 7/4 11/8

117 1.22

I: -49 +16
11/8 6/5

II: +0
1/1

III: -31 +16
7/4 6/5

*: +2 +0 +16 +2 +4
III 3/2 1/1 6/5 3/2 9/8

121

Staff I: +2, +0, -49, +16, +0, +2
 Staff II: +16, -31, +41, +2
 Staff III: +2, -49, +0, +4, -31, +0, +16
 Staff *: -31, +16, +41
 Time signatures: 3/2, 1/1, 6/5, 11/8, 1/1, 3/2, 6/5, 7/4, 13/8, 3/2, 3/2, 11/8, 1/1, 7/4, 1/1, 6/5, III 7/4, 6/5, 13/8

125

1.23

Staff I: -31, +4, +0, +16, +16
 Staff II: +4, +0, +41, -49
 Staff III: -31, +2
 Staff *: -31, +2
 Time signatures: 9/8, 7/4, 1/1, 6/5, 6/5, 13/8, 9/8, 1/1, 13/8, 11/8, 7/4, III 3/2, 7/4, III 3/2

129

1.24

Staff I: +4, -49, +0, +41, +2, -31
 Staff II: +0, -31, +4, -49
 Staff III: +4, +41, +2, -49
 Staff *: +16, -31, +4
 Time signatures: 11/8, 9/8, 1/1, 13/8, 3/2, 7/4, 13/8, 1/1, 7/4, 9/8, 11/8, 9/8, 13/8, 3/2, 11/8, 6/5, 7/4, 9/8

133

6/5 13/8 11/8 9/8 1/1

1/1 3/2 7/4 1/1

7/4 6/5 13/8 1/1 3/2 11/8 7/4

III 3/2 1/1 13/8 1/1 11/8 6/5

1.25

137

13/8 3/2

13/8

13/8 3/2 1/1 6/5

III 7/4

141

1.26

6/5 7/4 9/8 1/1 3/2

7/4 9/8

13/8 3/2 11/8 III 9/8

145

Staff I: Treble clef, key of B-flat major. Measures 145-148.

Staff II: Bass clef, key of B-flat major. Measures 145-148. Accidents: +4, +16, +2. Time signatures: 9/8, 6/5, 3/2.

Staff III: Bass clef, key of B-flat major. Measures 145-148. Accidents: +0, +41, +2, +4, +16, +0, -49, +2, +41. Time signatures: 1/1, 3/2, 9/8, 6/5, 1/1, 11/8, 13/8, 3/2.

Staff *: Treble clef, key of B-flat major. Measures 145-148. Accidents: +0, +4, +2, -31. Time signatures: 1/1, 9/8, 3/2, 7/4.

1.27

149

Staff I: Treble clef, key of B-flat major. Measures 149-152. Accidents: -49, +41, +16. Time signatures: 11/8, 13/8, 6/5.

Staff II: Bass clef, key of B-flat major. Measures 149-152. Accidents: -49, +0, +2. Time signatures: 11/8, 1/1, 3/2.

Staff III: Bass clef, key of B-flat major. Measures 149-152. Accidents: +0. Time signature: 1/1.

Staff *: Treble clef, key of B-flat major. Measures 149-152. Accidents: +0, +4, +16. Time signatures: III 1/1, 9/8, 6/5.

1.28

153

Staff I: Treble clef, key of B-flat major. Measures 153-156.

Staff II: Bass clef, key of B-flat major. Measures 153-156. Accidents: +16, -31, +2, +41. Time signatures: 7/4, 6/5, 3/2, 13/8.

Staff III: Bass clef, key of B-flat major. Measures 153-156. Accidents: +2, +4, +0, -31. Time signatures: 3/2, 9/8, 1/1, 7/4.

Staff *: Treble clef, key of B-flat major. Measures 153-156. Accidents: -49, +41, +0, -31, +0. Time signatures: 11/8, III 13/8, 1/1, 7/4, 1/1.

157

1.29

Staff I: +0, +41, -49, +16, +41, -31, +2, -49, +0, -49, +4, +2. Intervals: 1/1, 9/8, 6/5, 13/8, 7/4, 3/2, 11/8, 1/1, 11/8, 9/8, 3/2.

Staff II: +4, +0, +2, -31, +16. Intervals: 9/8, 1/1, 3/2, 7/4, 6/5, 1/1.

Staff III: +16, -49, +0. Intervals: 6/5, 11/8, 1/1.

Staff *: +4, +16, +4. Intervals: 9/8, 6/5, III 9/8.

161

Staff I: (Empty staff)

Staff II: +41, +2, -49, +0. Intervals: 13/8, 9/8, 3/2, 11/8, 1/1.

Staff III: +41, +4. Intervals: 13/8, 9/8.

Staff *: +2, +41, -49, +16, +0. Intervals: 3/2, 11/8, 13/8, 6/5, 1/1.

1.30

165

Staff I: (Empty staff)

Staff II: +16. Interval: 6/5.

Staff III: +16. Interval: 6/5.

Staff *: -31, +2, +4. Intervals: III 7/4, 3/2, 9/8.

169 1.31

Staff I: -31 +16 (7/4 6/5)

Staff II: -31 +41 +4 (7/4 13/8 9/8)

Staff III: +2 -31 +0 +41 -49 +16 (3/2 1/1 13/8 11/8 6/5)

Staff *: -31 -49 +2 +16 +4 +0 (7/4 11/8 3/2 6/5 9/8 1/1)

173

Staff I: +0 -31 (1/1 7/4)

Staff II: +0 -49 +2 +41 -31 +16 +2 +16 (1/1 11/8 3/2 13/8 7/4 6/5 3/2 6/5)

Staff III: +0 +2 -49 +0 +41 +4 -49 +0 +2 +0 (1/1 3/2 11/8 7/4 1/1 13/8 9/8 11/8 1/1 3/2 1/1)

Staff *: -31 -49 +4 +41 +2 (III 11/8 7/4 9/8 13/8 3/2)

177 1.32

Staff I: -49 +16 +41 +0 +16 (11/8 6/5 13/8 1/1 6/5)

Staff II: +41 +4 +0 +2 +41 -49 +0 (13/8 9/8 1/1 13/8 11/8 1/1)

Staff III: -31 +16 +41 (7/4 6/5 13/8)

Staff *: +4 -31 +0 +2 +16 -31 +41 +2 +16 (III 9/8 7/4 1/1 9/8 3/2 6/5 7/4 13/8 3/2 6/5)

1.33

181

I

II

III

*

6/5 3/2 9/8 7/4 11/8 9/8 6/5

11/8 9/8 1/1 13/8 6/5

1.34

185

I

II

III

*

1/1 3/2 13/8 3/2 11/8 7/4 9/8 1/1 11/8 1/1 13/8 6/5

11/8 1/1 13/8 6/5

1.35

189

I

II

III

*

3/2 13/8 11/8 9/8 7/4 1/1 6/5 3/2

1/1 7/4 6/5 3/2

193 1.36

I $\frac{7}{4}$ $\frac{6}{5}$ $\frac{11}{8}$ $\frac{1}{1}$ $\frac{9}{8}$ $\frac{3}{2}$ $\frac{6}{5}$ $\frac{11}{8}$ $\frac{1}{1}$ $\frac{13}{8}$ $\frac{3}{2}$ $\frac{1}{1}$

II $\frac{13}{8}$ $\frac{3}{2}$ $\frac{7}{4}$ $\frac{1}{1}$ $\frac{6}{5}$

III $\frac{3}{2}$ $\frac{6}{5}$ $\frac{11}{8}$ $\frac{7}{4}$ $\frac{9}{8}$ $\frac{3}{2}$ $\frac{1}{1}$ $\frac{6}{5}$ $\frac{9}{8}$ $\frac{6}{5}$ $\frac{13}{8}$ $\frac{3}{2}$

* $\frac{9}{8}$ $\frac{6}{5}$ $\frac{1}{1}$

197

I $\frac{7}{4}$ $\frac{9}{8}$ $\frac{11}{8}$ $\frac{1}{1}$ $\frac{13}{8}$ $\frac{3}{2}$ $\frac{6}{5}$

II $\frac{3}{2}$ $\frac{11}{8}$

III $\frac{7}{4}$ $\frac{6}{5}$ $\frac{1}{1}$ $\frac{9}{8}$

* $\text{III}^{\frac{3}{2}}$

201 1.37

I $\frac{7}{4}$ $\frac{6}{5}$ $\frac{1}{1}$ $\frac{9}{8}$ $\frac{11}{8}$

II $\frac{7}{4}$ $\frac{3}{2}$ $\frac{1}{1}$ $\frac{9}{8}$

III $\frac{11}{8}$ $\frac{1}{1}$

* $\text{III}^{\frac{1}{1}}$

205 1.38

Staff I: 3/2 9/8 1/1 7/4 1/1

Staff II: 7/4 6/5 13/8 3/2 7/4 9/8 11/8 3/2

Staff III: 7/4 3/2 11/8 1/1 3/2 6/5

Staff *: 13/8 3/2 11/8 9/8 1/1

209

Staff I: 6/5 13/8 11/8 3/2 1/1 9/8

Staff II: 1/1 11/8 6/5

Staff III: 13/8 1/1 9/8 11/8 9/8 6/5

Staff *: III 6/5 7/4

213 1.39

Staff I: 3/2 1/1 III 3/2

Staff II: 3/2 1/1 III 3/2

Staff III: 3/2 1/1 III 3/2

Staff *: 3/2 1/1 III 3/2

217 1.40

Staff I: $+2$, $3/2$

Staff II: $+2$, $+4$, -31 , $+0$, $+2$, $3/2$, $9/8$, $7/4$, $1/1$, $3/2$, $9/8$

Staff III: $+4$, $9/8$, -31 , $7/4$, $+0$, $1/1$, -49 , $11/8$

Staff *: $+16$, $6/5$

221

Staff I: -49 , $+0$, -31 , $+41$, $+16$, -49 , $11/8$, $1/1$, $7/4$, $13/8$, $6/5$, $11/8$

Staff II: $+41$, $+0$, $+16$, $13/8$, $1/1$, $6/5$

Staff III: $+41$, $+0$, $+2$, $13/8$, $1/1$, $3/2$

Staff *: -49 , $11/8$

225 1.41

Staff I: $+16$, $6/5$

Staff II: -49 , $11/8$

Staff III: $+41$, -31 , $+0$, $+4$, $7/4$, $13/8$, $1/1$, $9/8$

Staff *: $+2$, $3/2$

229 1.42

I: -31, +0, +4, -31, 7/4, 1/1, 9/8, 13/8, 7/4

II: +41, +16, +0, 13/8, 6/5, 1/1

III: -31, +2, 7/4, 3/2

*: +41, +4, +0, -31, +4, +0, +4, -49, +2, III 7/4, 9/8, 1/1, 7/4, 9/8, 1/1, 9/8, 11/8, 3/2, 13/8

233 1.43

I: +2, +16, 3/2, 6/5

II: +16, -31, 6/5, 7/4

III: +16, -49, 6/5, 11/8

*: +0, +41, +16, +41, +2, III 1/1, 13/8, 6/5, 13/8, 3/2

237

I: +0, +41, +4, 1/1, 13/8, 9/8

II: +2, +4, 3/2, 9/8

III: +2, +0, +41, -31, +16, -49, +0, +4, +16, 3/2, 1/1, 13/8, 7/4, 6/5, 11/8, 1/1, 9/8, 6/5

*: +0, -31, -49, +0, III 1/1, 7/4, 11/8, 1/1

2.1

III $\frac{9}{8}$ II $\frac{4}{3}$ I

+0 +4 +0 +0 +2

9/8 1/1 3/2

(241)

I

II

III

*

7/4 11/8 3/2 1/1 9/8 3/2 9/8 1/1

-29 -47 +4 +2 +6 +4 +2

13/8

-27 -45 +44

7/4 11/8 13/8

+0 +4 +8

II^{1/1} I^{3/2} III^{9/8}

2.2

III $\frac{9}{8}$ II $\frac{4}{3}$ I

+4 +0 +2

1/1 1/1 1/1

(245)

I

II

III

*

6/5 13/8 3/2

+18 +42 +4

7/4 1/1 3/2

-29 +2

+4 +8 +6 -27

1/1 9/8 3/2 7/4

-49

II^{11/8} II^{13/8}

2.3

III $\frac{9}{8}$ II $\frac{4}{3}$ I

+4 +2 +0 +2 +4

4/3 1/1 4/3

(249)

I

II

III

*

9/8 13/8 11/8 13/8 9/8 1/1

+42 +6 -47 +42 +2 +6

3/2

+0

1/1

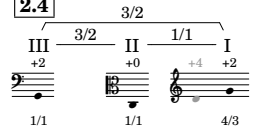
+6

3/2

+6 +0 +4 +8 -49

I^{9/8} II^{1/1} I^{3/2} III^{9/8} II^{11/8}

2.4



253

I

-27 +8

7/4 9/8

II

-49 +0 -31 +0 +4 -49 +2

11/8 1/1 7/4 1/1 9/8 11/8 3/2

III

+18 +6 +42

6/5 9/8 13/8

*

+6

III 9/8

257

I

-47 +18

11/8 6/5

II

+16 +2

6/5 3/2

III

-29 +4 +2

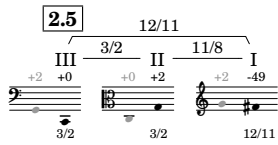
7/4 3/2 1/1

*

+18 -47

III 6/5 11/8

2.5



261

I

-49 -47 -45 -49

1/1 3/2 9/8 1/1

II

III

-47 +4 -29 +6

11/8 3/2 7/4 II 9/8

265

2.6

III 1/1 II 1/1 I

+0 -49 +2 -49 -49

11/8 12/11 1/1

I

-47 +3 -49 -45

11/8 3/2 13/8 1/1 9/8

II

-29 +42 +18

7/4 13/8 6/5

III

-49 +2

11/8 3/2

*

+18 +3

6/5 11/8

269

I

-33 +20 -49 -47 -49 +3 -47

7/4 6/5 1/1 3/2 11/8 1/1 11/8 3/2

II

-49 -45 -33 +3 -49 -8 +3 -49 -47

1/1 9/8 6/5 11/8 1/1 11/8 1/1 3/2 13/8

III

-49 -33 -45 -47 +20 -33 -47 +20 -49 +3

1/1 6/5 9/8 1/1 3/2 7/4 6/5 3/2 7/4 1/1 11/8

*

-33 -45

III 6/5 9/8

273

I

-33 -49

6/5 1/1

II

-33 +20 +3 -8 -45 -49

6/5 7/4 11/8 13/8 9/8 1/1

III

+20 -45

7/4 9/8

*

-49 -8 -47 +3 -8 -45 +20 -47

1/1 13/8 3/2 11/8 13/8 9/8 7/4 3/2

3.1

III 13/12 II 4/3 I

-49 -47 -49 -8 -49

4/3 16/13 1/1

(277)

I

+20

7/4

-45

9/8

-49 -47 -45 -8

1/1 3/2 9/8 13/8

II

+43

11/8

III

-47 -45

1/1 3/2

*

3.2

III 13/12 II 1/1 I

-47 -8 -49 -47

1/1 1/1 4/3

(281)

I

+20

7/4

II

-8

1/1

III

+40 -6

5/4 13/8

*

-8 +20 +40 +5

1 13/8 7/4 III 5/4 11/8

(285)

I

-47

1/1

+5 +40 -47 +22 -45

11/8 5/4 1/1 7/4 3/2

II

-6

3/2

-8 -39

1/1 7/4

III

-47

1/1

+22

7/4

*

-6 +32 +40 +40 +5 -45

III 13/8 II 13/8 III 5/4 5/4 11/8 3/2

-24-

3.3

III 13/12 II 13/12 I

-47 -8 -47 -47 -8

1/1 13/12 13/12

(289)

I

+5

11/8

II

-6 -47 -43 +5 -47 -43 -45 +22

1/1 13/8 9/8 11/8 1/1 9/8 3/2 7/4

III

+5

11/8

*

-6 +22 +32 -4

III 13/8 7/4 I 13/8 9/8

3.4

III 13/12 II 1/1 I

-47 -47 -8 -8 -47

1/1 13/12 13/12

(293)

I

-4 +32 -4 -22 -8

9/8 13/8 3/2 5/4 1/1

II

III

-6 +40 -43 -45

13/8 5/4 9/8 3/2

*

+5 -45 -6

III 11/8 3/2 III 13/8

(297)

I

-45

3/2

II

-8 -22 +32 -39 -8

1/1 13/8 5/4 7/4 1/1

III

+22 -47

7/4 1/1

*

+22 +32 +40 +40

7/4 II 13/8 III 5/4 5/4

3.5

III 13/12 1/1 II 13/12 I

-47 -8 -47 -47 -8

13/12 13/12

301

I

13/8 3/2 9/8 1/1 7/4 11/8 13/8 5/4

II

3/2 5/4 3/2

III

7/4 1/1

*

15/4 III 11/8 3/2

+32 -22 -6 -4 -8 -39 +43 +32 -22

+40 -45 -45

+22 -47

-22 +5 -45

3.6

III 13/12 1/1 II 13/12 I

-47 -8 -47 -8 -47

13/12 1/1 13/12

305

I

II

III

5/4

*

13/8 I 13/8 III 5/4 I 5/4

+40 -6 +32 +40 -22

309

I

1/1 13/8 9/8 3/2 1/1 5/4 1/1 11/8

II

11/8 9/8 3/2 11/8 13/8 7/4 3/2

III

13/8 3/2

*

II 11/8 3/2

-47 -6 -43 -45 -47 +5 -43 -47 +5 -6 +22 -45

+40 +5 -47

+32 -6

+5 -45

3.7

III 1/1 II 1/1 I

-8 -47 -47 -47

13/12 1/1 1/1

313

I

II

III

*

+40 -47 -43 -6 +22 -43 +5 -45

1/1 9/8 13/8 7/4 11/8 3/2

5/4

III 9/8

317

I

II

III

*

+22 -43 -6 +40 -47 -45 +22

7/4 9/8 13/8 5/4 1/1 3/2 7/4

-47 1/1 +40 5/4 +22 7/4

-43 +22 +40 -47 -43 -6 +5

9/8 7/4 5/4 1/1 9/8 13/8 11/8

+5 +22 -47 +40 -47 -6 -45 +22 -6 -47

11/8 7/4 1/1 5/4 13/8 1/1 13/8 7/4 13/8 3/2 1/1

4.1

III 5/4 II 1/1 I

-47 -47 +40 -47

1/1 5/4 1/1

321

I

II

III

*

+40 -47 +40

5/4 1/1 5/4

+22 7/4

+5 11/8

4.2

III 13/10 II 5/4 I

-47 +40 +40 -6 -47

5/4 13/10 1/1

(325)

I +5 11/8

II +40 -20 1/1 13/8

III -6 +5 13/8 11/8

* -6 +22 +8 7/4 II 7/4 +8 7/4

III 13/8

(329)

I +22 -47 -43 7/4 1/1 9/8

II -4 +9 3/2 6/5 +45 11/8

III +42 +26 +40 -20 +43 +42 +8 +8 5/4 3/2 1/1 13/8 9/8 7/4 3/2 7/4

* +5 -45 +26 -6 +22 +9 11/8 3/2 III 5/4 13/8 7/4 II 6/5

4.3

III 5/4 II 13/10 I

+40 -6 -47 -47 -6

1/1 13/8 13/8

(333)

I +9 6/5

II -43 -47 9/8 1/1

III

* +8 III 7/4

337

I: 3/2 13/8 9/8

II: 3/2 7/4 1/1

III: 5/4 1/1 7/4

*: I 3/2 13/8

4.4

I: 13/10 13/8 5/4 1/1

II: 13/8 13/8 13/8 13/8

III: 13/8 13/8 13/8 13/8

*: 13/8 13/8 13/8 13/8

4.5

I: 13/8 1/1 13/10 3/2

II: 13/8 1/1 13/10 3/2

III: 13/8 1/1 13/10 3/2

*: 13/8 1/1 13/10 3/2

349

I: +9 -6 -37 -2 +34 -6 +34 -4 -37
6/5 1/1 7/4 9/8 13/8 1/1 13/8 3/2 7/4

II: -4 -2 +34 +45 -6 +9 +45 -6 -4
3/2 9/8 13/8 11/8 1/1 6/5 11/8 1/1 3/2

III: +45 -2 -4 -37
11/8 9/8 3/2 7/4

*: +45 -4 -2 -4 -6 -37
11/8 3/2 9/8 13/8 3/2 1/1 7/4

5.1

III -6 16/11 -6 II +45 8/7 -6 I -37

353

I: +45 -37
11/8 1/1

II: -37

III: -37

*: +9
III 6/5

357

I: +3
13/8

II: +45 +31 -4 +14 -14
5/4 1/1 11/8 7/4 13/8

III: +9 -6 +9 +45
6/5 1/1 6/5 11/8

*: +9 +45 +31 +34 -37
6/5 11/8 7/4 III 13/8 7/4

5.2

III 8/7 II 14/11 I

-6 -37 +45 -6 -37 +45

(361) 8/7 16/11 14/11

I

3/2 5/4 9/8

II

9/8 7/4 3/2

III

7/4 3/2 1/1 13/8 11/8 9/8 6/5 7/4 1/1

*

I^{11/8} II^{9/8}

+47 +31 +49

-2 -37 -4

+31 -37 -35 +3 -33 +14 -22 +31 -37

-4 -2

5.3

III 8/7 II 8/7 I

-37 -6 -6 -37 +45 -37

(365) 8/7 8/7 14/11

I

1/1

II

1/1 9/8

III

9/8

*

III^{3/2} 13/8 II^{7/4}

+45

-37 -33

-2

-35 +3 +31

(369)

I

6/5 7/4 3/2 1/1 7/4 11/8 13/8

II

III

7/4 3/2 7/4 9/8 3/2

*

9/8 II^{9/8}

-35 +14 -22 +31 -35 -37 +31 +14

-37 -4 -37 -2 -4

-33 -2

5.4

III 1/1 II 1/1 I

-6 -37 -37 -37

8/7 1/1 1/1

(373)

I

II

III

*

-22 +14 -35 +3 -37 -22 -33 +14

6/5 11/8 7/4 13/8 1/1 6/5 9/8 11/8

+3 -37 -33 -22 -37

13/8 1/1 9/8 6/5 1/1

-35 -37 +31 +31 -33

III 3/2 1/1 7/4 7/4 9/8

13/8

(377)

I

II

III

*

-33 +31 -37 -22 +14 -33 +3 -37 -35 -22

9/8 7/4 1/1 6/5 9/8 13/8 1/1 3/2 6/5

-35 +3

3/2 13/8

+31

7/4

-37 +3 -22 -35 +14 -33 +31

1/1 13/8 6/5 11/8 9/8 7/4 13/8

6.1

III 4/3 II 4/3 I

-37 -35 -37 -37

4/3 1/1 1/1

(381)

I

II

III

*

-37 +14

1/1 11/8

-22

6/5

+16

11/8

6.2

III 8/5 II 4/3 I 6/5

-35 -22 -37 -35

8/5 4/3 1/1

385

I

-22 -35 +14 -37 -35

6/5 3/2 11/8 1/1 9/8 3/2

II

-35 -37 -33 +14 +3 -37 -35

3/2 1/1 9/8 11/8 13/8 1/1 3/2

III

-49 -33 -35

5/4 3/2 1/1

*

+14 +14

II^{11/8} 11/8

389

I

-33 -22

9/8 6/5

II

+33

7/4

III

+47 -35 -20

7/4 5/4 3/2

*

+3 -32 +47 -33 -22 +14

I^{13/8} II^{9/8} III^{7/4} I^{9/8} 6/5 11/8

6.3

III 6/5 II 4/3 I 8/5

-22 -35 -37 -37 -35

1/1 4/3 4/3

393

I

-35

1/1

II

-22 -37 -35 +14 +3 -22 +31

1/1 3/2 11/8 13/8 6/5 7/4

III

-22 +30 -35 +19

1/1 11/8 5/4 13/8

*

+3 -32

13/8 I^{9/8}

6.4

III 6/5 II 4/3 I
-22 -37 -37 -22 -35
6/5 6/5 1/1

997

I 13/8 1/1

II -35 -22 +47 +30
1/1 11/8 5/4 7/4

III -33 -35 -37 +14 -33
3/2 1/1 9/8 11/8

* +47 -33
II 7/4 III 9/8

6.5

III 1/1 II 4/3 I
-37 -35 -22 -35 -35 -37
4/3 8/5 4/3

401

I +33 +16 -35 -32 +5
7/4 11/8 1/1 9/8 13/8

II -35 +47 -18 -35
5/4 7/4 9/8 1/1

III -22 -33 -35
6/5 7/4 1/1

* +5 +14 +14 +30 -49
I 13/8 III 11/8 11/8 II 11/8 III 5/4

6.6

III 16/11 II 12/11 I
-35 +14 -35 -37 -37 -35
12/11 4/3 4/3

405

I -37 -33 +14 +31 -35 -22 +14 -35 -37
1/1 9/8 11/8 7/4 3/2 6/5 11/8 3/2 1/1

II +16 -33 +5 -49
11/8 3/2 13/8 5/4

III +16 -32 +5 +16 -35 +5 -49 -35
11/8 9/8 13/8 11/8 13/8 5/4 1/1

* +16 -33
11/8 3/2

409

6.7

1/1

III 12/11 II 12/11 I

+14 -35 -37 +14 -35 +14

12/11 16/11 12/11

I

+5 +16 +33 -49 +33 -35 +16

13/8 11/8 7/4 5/4 7/4 1/1 11/8

II

+14

11/8

III

-17 +16 +14

7/4 3/2 1/1

*

+33 -17 +14 +0 -49

III 7/4 I 7/4 III 5/4 I 5/4

II 11/8

413

I

+16 +0 +18 +14 +16

5/4 9/8 13/8 3/2 1/1

II

+0 -46 +14 +18

13/8 5/4 1/1 9/8

III

-32 +33 +16 +5 +33 -32 -49 +16 -32

9/8 11/8 13/8 7/4 9/8 5/4 9/8 11/8

*

-35 -46 -17 +33 +18 +18 +0

II 11/8 13/8 7/4 III 7/4 II 9/8 9/8 5/4

417

6.8

1/1

III 1/1 II 1/1 I

-35 +14 +14 +14

12/11 1/1 1/1

I

-17

7/4

II

-46 +16 +0 -35

13/8 1/1 7/4 11/8

3/2 5/4

III

-35 +16 -17 -35 +18 +14 -46

11/8 III 3/2 7/4 11/8 9/8 1/1 13/8

*

-35

-35-

421

I

-35 +0 -46 -17 +18 +16 -17 +14

11/8 5/4 13/8 7/4 9/8 3/2 7/4 1/1

II

+16 +18 +14 -35 +0 +14 +18

1/1 11/8 5/4 1/1 9/8

3/2 9/8

III

+14 +18 -17 +16 +14 -35

1/1 9/8 7/4 3/2 1/1 11/8

*

-35

11/8

7.1

III 3/2 II 1/1 I

+14 +14 +16 +14

1/1 3/2 1/1

425

I

-35 +16

11/8 3/2

II

-33 +16 -15 +2

11/8 1/1 13/8 5/4 7/4

III

-46 +16 +0 +18 +0

13/8 3/2 5/4 9/8 1/1 5/4

*

-46 -17

III 13/8 7/4

7.2

III 13/8 II 3/2 I

+14 +16 -46 +14 +16

1/1 13/12 3/2

429

I

+2

5/4

II

-17

7/4

III

-33 +6

II 11/8 II 11/8

433

7.3

III 13/12 II 3/2 I

+14 +16 -46 +16 +14

3/2 1/1 3/2

III 5/4 11/8

13/8 11/8

437

7.4

III 3/2 II 12/11 I

+16 -46 +14 +14 -35

1/1 13/8 11/8

III 5/4

13/8 11/8

441

7.4

III 3/2 II 12/11 I

+16 -46 +14 +14 -35

1/1 13/8 11/8

III 5/4

13/8 11/8

445

-35

1/1

+16 +14 +18 +14 +16 +14 -35 +18 -35

1/1 3/2 9/8 1/1 11/8 3/2 1/1 9/8 11/8

+18 +2

3/2 5/4

-33

III 11/8

7.5

12/11

III 1/1 II 12/11 I

+16 -35 +14 -35 -35 +16

12/11 11/8 12/11

449

+34

7/4

-33 +2 +20

5/4 11/8 9/8

+6

13/8

-35 +34 -31

1/1 7/4 9/8

-33

11/8

7.6

1/1

III 1/1 II 1/1 I

-35 -35 +16 -35

1/1 1/1 12/11

453

+18 +16

3/2 1/1

-48 -31 +17 +34 -35 -33 -31

5/4 9/8 11/8 1/1 3/2 7/4 9/8

-44 -15 -31 -48

I 13/8 7/4 III 9/8 5/4

457

7/4 11/8 3/2 13/8 5/4 1/1 9/8

5/4 11/8 3/2 7/4 1/1 3/2

11/8 3/2 7/4 5/4

III 9/8 3/2 1/1 11/8 1/1 7/4 3/2 13/8

8.1 III 11/8 II 16/13 I 22/13 I 16/13

461

11/8

1/1 13/8 1/1 9/8 7/4 11/8

1/1 9/8 5/4 3/2

8.1 III 11/8 II 16/13 I 22/13 I 16/13

465

3/2 1/1 7/4 9/8 3/2

13/8 11/8 7/4 9/8 3/2 1/1 5/4 13/8 3/2 7/4

1/1

13/8 11/8 3/2

8.1 III 11/8 II 16/13 I 22/13 I 16/13

8.2

22/13

III 16/13 II 11/8 I

+17 -35 -35 +6 +6 +17

11/8 16/13 22/13

469

I

-43

11/8

13/8 7/4 1/1

-33

-31

9/8 3/2 9/8

II

III

* +34

7/4

473

I

+19

3/2

+6 -43 +6 -43 +8

1/1 11/8 1/1 11/8 3/2

-33

+6

-48 -33

3/2 13/8 5/4 3/2

II

III

* +19

1 3/2

-43

II 11/8

8.3

16/13

1/1 16/13 I

-35 +6 +6 +17 -35

16/13 1/1 11/8

477

I

+6 -33 +6

13/8 3/2 13/8

+46

+6 -25

13/8 1/1 7/4

+6

1/1

+46

-25

III 13/8 7/4

III 13/8

8.4

III $\frac{1}{1}$ II $\frac{1}{1}$ I

+6 +6 -35 +6

1/1 1/1 16/13

(481)

I $\frac{1}{1}$ $\frac{11}{8}$ $\frac{6}{5}$ $\frac{7}{4}$ $\frac{3}{2}$

II

III $\frac{11}{8}$ $\frac{9}{8}$ $\frac{7}{4}$ $\frac{11}{8}$ $\frac{1}{1}$

* $\frac{1}{3/2}$ $\frac{1}{1/1}$

(485)

I $\frac{11}{8}$ $\frac{9}{8}$

II $\frac{6}{5}$ $\frac{11}{8}$ $\frac{1}{1}$ $\frac{3}{2}$ $\frac{7}{4}$ $\frac{1}{1}$

III $\frac{6}{5}$ $\frac{9}{8}$ $\frac{3}{2}$ $\frac{13}{8}$ $\frac{6}{5}$ $\frac{1}{1}$ $\frac{7}{4}$ $\frac{3}{2}$

* $\frac{11}{8}$ $\frac{7}{4}$ $\frac{3}{2}$ $\frac{6}{5}$

9.1

III $\frac{3}{2}$ II $\frac{1}{1}$ I

+6 +6 +8 +6

1/1 3/2 1/1

(489)

I $\frac{13}{8}$ $\frac{1}{1}$

II $\frac{6}{5}$ $\frac{11}{8}$ $\frac{7}{4}$ $\frac{1}{1}$ $\frac{9}{8}$ $\frac{6}{5}$ $\frac{13}{8}$

III

* $\frac{13}{8}$ $\frac{9}{8}$

493

I

II

III

*

8

III

497

I

II

III

*

1/1 4/3 3/2 +23 -41 -23 +12 6/5 11/8 7/4 9/8

+48 13/8 +12 -4 3/2 5/4

+8 -43 +21 3/2 11/8 6/5

-23 +8 -39 +12 +46 +12

II^{7/4} III^{3/2} II^{11/8} I^{9/8} III^{13/8}

9.4

1/1 1/1 1/1

III 1/1 II 1/1 I

+10 +8 +10 +6 +10

1/1 4/3 9/8

505

-25 +46 +8

7/4 13/8 3/2

-23 +23 +12 -41 +8 +12

6/5 7/4 9/8 11/8 1/1 3/2 9/8

-4 +10 -21

5/4 1/1 7/4

-39 +46

11/8 13/8

509

+10 -21 +12 +10

1/1 5/4 7/4 1/1 8/5 7/4 3/2 1/1

-4 +10 -39

5/4 1/1 11/8

-39 +10 +12 +14

11/8 1/1 3/2 9/8

-39 +12 +10 +23 +10 +12 -21 +14 -4 -39

11/8 3/2 1/1 8/5 1/1 3/2 7/4 9/8 5/4 11/8

-4 -21 +12 -4 -39 +10 -21 +14 +10 +23 -21 +14

III 5/4 7/4 3/2 5/4 11/8 1/1 7/4 9/8 1/1 8/5 7/4 9/8 3/2

10.1

12/11 3/2 11/8

III 3/2 II 11/8 I

+10 +10 +12 +10 -39

1/1 3/2 11/8

513

+14

9/8 3/2

+10 +23

1/1 8/5

+10

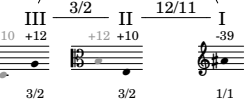
1/1

-4 +10 +12 -39 -35

5/4 1/1 3/2 11/8 9/8

10.2

11/8



517

I: +47 -35 -39 -37 +30 -39
5/4 9/8 1/1 3/2 7/4 1/1

II: -2 -48 +14
5/4 13/8 3/2

III: +14 +23
9/8 8/5

*: +23 -21 +23 -2
III^{8/5} 7^{8/5} II^{5/4} 7/4

521

I: +2 +12 +47 -35 -39 +30 +47 -39 -35 -37 +12
13/8 11/8 9/8 1/1 5/4 7/4 5/4 1/1 9/8 3/2 11/8

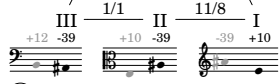
II: +14 -21 +23 -39
9/8 7/4 1/1 11/8 8/5

III: -20 +12 -2
7/4 1/1 5/4

*: +12 +14 +30
I^{11/8} II^{9/8} I^{7/4}

10.3

11/8



525

I: +23 +10 +14
8/5 1/1 9/8

II: -37 +47
3/2 5/4

III: -35 +12 -37
9/8 11/8 3/2

*: -35 +23 +47
III^{9/8} I^{8/5} III^{5/4}

10.4

55/32 1/1 I

III 55/32 II 1/1 I

-39 -39 +23 +10 -39

1/1 55/32 11/8

529

I

II

III

*

+12 -37

11/8 3/2

533

I

II

III

*

-37 +47 +30 -37

5/4 7/4 3/2

-8 +23 +27 -36 +23 +25 -8 +23 +10 -36 +23

7/4 1/1 9/8 13/8 1/1 3/2 7/4 1/1 5/4 13/8 1/1

+47 -39 +47

5/4 1/1 5/4

-36 -8 +47

II^{13/8} 7/4 III^{5/4} 5/4

10.5

55/32 1/1 II 55/32 I

-39 +23 +23 -39

55/32 1/1 1/1

537

I

II

III

*

+2 +12 -39 +30

13/8 11/8 1/1 7/4

11/8 3/2

+47 +12 -37

5/4 11/8 3/2

+25 -25 +10

3/2 11/8 5/4

+27

9/8

+12 -25 +25 +37 -36 -8

I^{11/8} III^{11/8} 3/2 8/5 13/8 7/4

-45-

10.6

III $\frac{1}{1}$ II $\frac{1}{1}$ I

+23 +23 -39 +23

$\frac{1}{1}$ $\frac{1}{1}$ $\frac{55}{32}$

(541)

I $\frac{1}{1}$ $\frac{13}{8}$ $\frac{9}{8}$

II $\frac{9}{8}$ $\frac{3}{2}$ $\frac{7}{4}$ $\frac{1}{1}$

III $\frac{3}{2}$ $\frac{13}{8}$ $\frac{7}{4}$ $\frac{1}{1}$ $\frac{3}{2}$

* $\frac{1}{5/4}$ $\frac{11}{8}$ $\frac{7}{4}$ $\frac{1}{1}$

+27 +23 +27 +25 -8 +23 +25

(545)

I $\frac{7}{4}$ $\frac{5}{4}$ $\frac{1}{1}$ $\frac{9}{8}$ $\frac{3}{2}$

II $\frac{9}{8}$ $\frac{13}{8}$ $\frac{7}{4}$ $\frac{1}{1}$ $\frac{11}{8}$ $\frac{5}{4}$ $\frac{3}{2}$ $\frac{7}{4}$ $\frac{13}{8}$ $\frac{11}{8}$

III $\frac{11}{8}$ $\frac{5}{4}$ $\frac{7}{4}$

* $\frac{11}{8}$ $\frac{1}{1}$ $\frac{7}{4}$ $\frac{9}{8}$ $\frac{3}{2}$ $\frac{5}{4}$ $\frac{7}{4}$ $\frac{11}{8}$ $\frac{3}{2}$ $\frac{1}{1}$

+27 +27 -36 -8 +23 -25 +10 +25 -8 -36 -25

-25 +10 -8

-25 +23 -8 +27 +25 +10 -36 -8 -25 +25 +23

11.1

III $\frac{13}{8}$ II $\frac{13}{8}$ I

+23 -36 +23 +23

$\frac{13}{8}$ $\frac{1}{1}$ $\frac{1}{1}$

(549)

I $\frac{5}{4}$ $\frac{11}{8}$ $\frac{7}{4}$ $\frac{13}{8}$

II $\frac{9}{8}$ $\frac{3}{2}$ $\frac{11}{8}$

III $\frac{13}{8}$ $\frac{1}{1}$ $\frac{3}{2}$ $\frac{9}{8}$

* $\frac{5}{4}$ $\frac{13}{8}$ $\frac{11}{8}$

+27 +25 -25 -34 -32 +4 -36

+10 -36 +10 -25

11.2

[illegible]

11.3

III 13/8 II 5/4 I

-36 +23 -36 +23 +10

13/8 1/1 5/4

I

13/8 -50

13/8

II

+33 -50 +4 +15 -34 -36 -32 -50

7/4 5/4 13/8 11/8 3/2 1/1 9/8 5/4 3/2

III

+25 +27 +10 -25 -8 +25 +23

3/2 9/8 5/4 11/8 7/4 3/2 1/1

*

-50 +27 +10 +4

5/4 9/8 5/4 13/8

-47-

11.4

5/4

III 13/8 II 13/10 I
+23 -36 -36 +23 +10
13/8 13/8 1/1

565

I

II +33 7/4 -25 11/8

III +25 3/2 -32 9/8 +33 7/4

* +25 -39 III^{3/2} I^{11/8}

11.5

1/1

III 13/10 II 13/10 I
-36 +23 +10 +10
1/1 5/4 1/1

569

I -39 11/8 +10 1/1 +12 3/2 +14 9/8 -4 5/4 +10 1/1 -50 13/8 +10 1/1 -21 7/4

II +25 3/2 +10 5/4 +23 1/1 +27 9/8 +25 3/2

III +4 13/8 -34 3/2 -50 5/4 -32 9/8 -36 1/1 +15 11/8 +33 7/4 -36 1/1

* -32 III^{9/8} -50 5/4 -21 I^{7/4}

573

I -39 11/8 +14 9/8

II -50 13/8

III -34 3/2 -50 13/8 +4 5/4 +33 7/4

* +14 II^{9/8} -4 5/4 -39 11/8 -32 III^{9/8} -50 5/4

-48-

11.6

III 13/10 II 1/1 I

-36 +10 +10 -36 +10

13/10 13/10 1/1

(577)

I

II

III

*

-50

II^{5/4}

-36 -50 -32

1/1 5/4 9/8

+12 +14

1/1 3/2 9/8

11.7

III 1/1 II 1/1 I

+10 -36 +10 +10

1/1 13/10 1/1

(581)

I

II

III

*

+10 +14 -4 +12 +10

1/1 5/4 9/8 3/2 1/1

-21

7/4

-21 +14

III^{7/4} 9/8

(585)

I

II

III

*

+12 -4 +10 -50

3/2 7/4 11/8 5/4 7/4 3/2 9/8 11/8 5/4 3/2

-21 +10 -39 -4 +12 +10 -4 -21 -39 +14 -50

7/4 1/1 11/8 5/4 3/2 1/1 5/4 11/8 7/4 9/8 13/8

+10 -39 -50 +12 +10 -4 +12

1/1 11/8 13/8 3/2 1/1 5/4 3/2

+12 -39 +10 -4 -21 -4 +14 -50 -39 +10 -50 -21

III^{11/8} 3/2 5/4 7/4 5/4 9/8 13/8 11/8 1/1 13/8 7/4

1/1

589

III 13/8 -50

II +10 1/1

I

* +12 3/2 -39 11/8 -4 5/4 +14 9/8

12.1

III +10 +14 9/8 16/13 II +10 1/1 I +10 -50 16/13

II -21 5/4 -4 7/4 +10 1/1 +12 3/2

I +19 7/4

III +14 1/1

* -4 II 5/4

12.2

III +14 18/13 II +10 -50 16/13 I -50 +10 16/13

II -50 16/13 -9 13/8 -48 3/2

I -50 1/1

III +18 9/8

* +18 III 9/8 -9 I 13/8 +12 II 3/2

601

I $\frac{1}{1}$ $\frac{9}{8}$

II $\frac{7}{4}$ $\frac{11}{8}$ $\frac{7}{4}$

III $\frac{11}{8}$ $\frac{13}{8}$

* $\frac{7}{4}$ $\frac{11}{8}$ $\frac{5}{4}$ $\frac{9}{8}$ $\frac{13}{8}$

12.3

III $\frac{18}{13}$ II $\frac{1}{1}$ I

+14 -50 -50 +14 +10 -50

18/13 18/13 16/13

605

I $\frac{1}{1}$ $\frac{3}{2}$ $\frac{7}{4}$ $\frac{11}{8}$

II $\frac{13}{8}$

III $\frac{5}{4}$

* $\frac{7}{4}$ $\frac{9}{8}$

12.4

III $\frac{1}{1}$ II $\frac{1}{1}$ I

-50 +14 -50 -50

1/1 18/13 1/1

609

I $\frac{5}{4}$ $\frac{13}{8}$ $\frac{9}{8}$ $\frac{1}{1}$ $\frac{3}{2}$ $\frac{9}{8}$ $\frac{7}{4}$ $\frac{3}{2}$ $\frac{7}{4}$ $\frac{9}{8}$

II $\frac{1}{1}$ $\frac{5}{4}$ $\frac{9}{8}$

III $\frac{7}{4}$ $\frac{13}{8}$ $\frac{1}{1}$ $\frac{3}{2}$

* $\frac{9}{8}$ $\frac{5}{4}$ $\frac{11}{8}$

613

13.1

III 5/4 II 5/4 I 1/1

-50 +37 -48 -9

1/1 5/4 3/2 7/4 13/8

-50 +19 -50 -48 +37

1/1 7/4 1/1 3/2 5/4

-46 +19 -48 +2 -46 +37 -9 -50 +19 -48 -50

9/8 7/4 3/2 11/8 9/8 5/4 1/1 7/4 3/2 1/1

-50 +37 -48 -46 -50 +37 +19 -46

III 1/1 5/4 3/2 9/8 1/1 5/4 7/4 9/8

617

13.2

III 9/8 II 10/9 I 5/4

+37 -46 -50 -50 +37

10/9 1/1 5/4

+37

5/4

+2 +19

11/8 7/4

+19 -48 -12 +40

7/4 3/2 11/8 9/8

-48 -50 -46 +2 -48 -50 +37 -48

3/2 1/1 9/8 11/8 3/2 1/1 5/4 II 3/2

621

13.3

III 9/8 II 10/9 I 5/4

+37 -46 -50 -50 +37

10/9 1/1 5/4

-48 -50 +37 -9 -50

3/2 1/1 5/4 13/8 1/1

+5 +37 -23

7/4 1/1 13/8

-9 +38 -46 +37

13/8 III 3/2 II 9/8 5/4

13.3

5/4

| | | | | |
|-----|-----|-----|------|-----|
| III | 9/8 | II | 10/9 | I |
| -46 | | -50 | | +37 |
| 1/1 | | 1/1 | | 1/1 |

625

I: $\frac{11}{8}$ $\frac{1}{1}$ $\frac{3}{2}$ $\frac{1}{1}$ $\frac{9}{8}$ $\frac{7}{4}$ $\frac{6}{5}$ $\frac{1}{1}$ $\frac{3}{2}$

II: $\frac{5}{4}$ $\frac{3}{2}$ $\frac{9}{8}$ $\frac{3}{2}$ $\frac{1}{1}$ $\frac{11}{8}$

III: $\frac{9}{8}$ $\frac{1}{1}$ $\frac{3}{2}$

*: $\text{II}^{\frac{11}{8}}$ $\frac{3}{2}$ $\text{III}^{\frac{3}{2}}$ $\text{I}^{\frac{3}{2}}$

629

I: $\frac{11}{8}$ $\frac{13}{8}$ $\frac{7}{4}$ $\frac{3}{2}$ $\frac{6}{5}$ $\frac{1}{1}$ $\frac{9}{8}$ $\frac{1}{1}$ $\frac{7}{4}$ $\frac{3}{2}$ $\frac{13}{8}$ $\frac{11}{8}$ $\frac{6}{5}$ $\frac{1}{1}$

II: $\frac{5}{4}$ $\frac{1}{1}$ $\frac{3}{2}$

III: $\frac{5}{4}$ $\frac{1}{1}$ $\frac{3}{2}$

*: $\text{I}^{\frac{13}{8}}$

13.4

10/9

| | | | | |
|-----|------|-----|-----|------|
| III | 10/9 | II | 1/1 | I |
| -46 | | -50 | +37 | +37 |
| 1/1 | | 5/4 | | 10/9 |

633

I: $\frac{7}{4}$

II: $\frac{5}{4}$ $\frac{3}{2}$ $\frac{9}{8}$ $\frac{7}{4}$

III: $\frac{7}{4}$ $\frac{3}{2}$

*: $\frac{13}{8}$ $\text{II}^{\frac{9}{8}}$ $\frac{5}{4}$

637

13.5

III $\frac{10}{9}$ II $\frac{1}{1}$ I

-46 -46 -46

$\frac{1}{1}$ $\frac{1}{1}$ $\frac{1}{1}$

I

9/8 3/2 9/8 1/1

-42 -44 -42 -46

+37 +38

-23 -48

13/8 6/5 1/1 3/2

II

-42 -46 -5 +40

9/8 1/1 13/8 5/4

III

+40 +5 -44 +38 -23

$\Pi^{9/8}$ $\text{III}^{11/8}$ 3/2 $\Pi^{3/2}$ 13/8

*

641

13.6

III $\frac{1}{1}$ II $\frac{1}{1}$ I

-46 +37 -46 -46

$\frac{1}{1}$ $\frac{10}{9}$ $\frac{1}{1}$

I

-5 +40 -42 +23

13/8 5/4 9/8 7/4

II

+37

1/1

III

+5 -44 -46 +23 -5 +5 -5 -44

11/8 3/2 1/1 7/4 13/8 11/8 13/8 3/2

1/1 11/8

I

-42 +40 +5 -44 -5 -23

$\text{III}^{9/8}$ $\text{III}^{11/8}$ 3/2 13/8 $\Pi^{13/8}$

$\Pi^{9/8}$

*

645

I

-44 -46 +5 -46 -5 +23 +5 +40

3/2 1/1 11/8 1/1 13/8 7/4 11/8 5/4

II

III

+40 +23 -42 -46 -42 +23 -5 -42 -46 +40 +23 -44

5/4 7/4 9/8 1/1 9/8 7/4 13/8 9/8 1/1 5/4 7/4 3/2

I

-44 -5 +23 -42 +5 +5 -44 +23

$\text{III}^{3/2}$ 13/8 7/4 1/1 11/8 11/8 3/2 7/4

5/4

*

-54-

649 -42

I 9/8

II -5 +5 -46 -42 +23 -44 -5 -44 +40 -46

13/8 11/8 1/1 7/4 3/2 13/8 1/1 3/2 5/4

III -46 -5 +5

1/1 13/8 11/8

* -46 +40 -5

1/1 5/4 13/8

14.1

III 3/2 II 1/1 I

-46 -46 -44 -46

1/1 3/2 1/1

653

I -46

1/1

II +7 -3 -42 -44 +42 +25 -40 -42

11/8 3/2 1/1 5/4 7/4 9/8 3/2

III -42

9/8

* -44 +23

3/2 III 7/4

14.2

III 4/3 II 9/8 I

-46 -42 -44 -46

9/8 1/1 1/1

657

I -44 +5 +40

3/2 11/8 5/4

II +7 +25 +42

11/8 7/4 5/4

III -44

3/2

* +42 -42

II 5/4 III 9/8

14.3

III 4/3 II 4/3 I
-42 -44 -46 -44
1/1 1/1 3/2

661

I 1/1 13/8 11/8 3/2

II 1/1

III 5/4 9/8 11/8 13/8 1/1 3/2

* II 7/4 III 5/4

+44 -38 +9 -1 -42 -40

+25 +44

-46 -5 -44 +5

665

I 1/1 5/4 9/8 1/1 3/2

II 11/8 9/8

III 7/4

* II 9/8 5/4 11/8 3/2

-44 -42 -40 -44 -42

+42 -40

+7 -40

-40

14.4

III 1/1 II 1/1 I
-42 -44 -44 -44
4/3 1/1 1/1

669

I 13/8 7/4 11/8 5/4 1/1 9/8 1/1 13/8 5/4

II 3/2

III 11/8

* 7/4 III 13/8

+25 -3

+9 +25 +7 +42 -44 -40 -44 -3 +42

-42

-56-

673

-44 +25

7/4 1/1

-44 -3 -42 +42 -44

1/1 13/8 5/4 3/2 1/1

+42 -40

5/4 9/8

+7 -44 +42 -3 -42 -44 +25 +42

11/8 1/1 5/4 3/2 1/1 7/4 5/4

677

15.1

12/11 16/11 4/3 I

-44 -44 +7 -44 -42

1/1 16/11 4/3

-42 +7

3/2 11/8

-44

1/1

-44 +25 -42 -3 -42

1/1 7/4 3/2 13/8 3/2

681

-38 -42 +44 -40 -1 -42

9/8 1/1 5/4 7/4 13/8 1/1

+11 +9 -24 +48 +7 +9

3/2 9/8 7/4 13/8 1/1 3/2

+25 +7

7/4 11/8

+44 -40 +42 +42 +7

I 5/4 III 9/8 5/4 5/4 11/8

15.2 $\frac{4}{3}$

III $\frac{12}{11}$ II $\frac{16}{11}$ I

-44 +7 -42 -42 -44

(685) $\frac{16}{11}$ $\frac{12}{11}$ $\frac{4}{3}$

I $\frac{3}{2}$ $\frac{11}{8}$ $\frac{9}{8}$ $\frac{5}{4}$ $\frac{7}{4}$ $\frac{3}{2}$ $\frac{11}{8}$ $\frac{7}{4}$ $\frac{11}{8}$ $\frac{3}{2}$

II $\frac{11}{8}$ $\frac{13}{8}$ $\frac{5}{4}$ $\frac{1}{1}$ $\frac{7}{4}$ $\frac{5}{4}$

III $\frac{3}{2}$ $\frac{13}{8}$ $\frac{1}{1}$ $\frac{3}{2}$ $\frac{7}{4}$ $\frac{6}{5}$ $\frac{1}{1}$ $\frac{9}{8}$ $\frac{13}{8}$

* $\frac{3}{2}$ $\frac{13}{8}$ $\frac{1}{1}$ $\frac{3}{2}$ $\frac{7}{4}$ $\frac{6}{5}$ $\frac{1}{1}$ $\frac{9}{8}$ $\frac{13}{8}$

III $\frac{6}{5}$ I $\frac{7}{4}$ II $\frac{5}{4}$

15.3 $\frac{14}{11}$

III $\frac{1}{1}$ II $\frac{14}{11}$ I

+7 -42 +7 -44 +25

(689) $\frac{1}{1}$ $\frac{12}{11}$ $\frac{8}{7}$

I $\frac{5}{4}$ $\frac{11}{8}$ $\frac{1}{1}$

II $\frac{1}{1}$ $\frac{3}{2}$ $\frac{13}{8}$ $\frac{6}{5}$

III $\frac{11}{8}$ $\frac{3}{2}$ $\frac{7}{4}$ $\frac{1}{1}$

* $\frac{11}{8}$ $\frac{3}{2}$ $\frac{7}{4}$ $\frac{1}{1}$

15.4 $\frac{14}{11}$

III $\frac{14}{11}$ II $\frac{1}{1}$ I

+7 +7 +25 +25 +7

(693) $\frac{1}{1}$ $\frac{14}{11}$ $\frac{14}{11}$

I $\frac{9}{8}$ $\frac{3}{2}$ $\frac{13}{8}$ $\frac{9}{8}$

II $\frac{7}{4}$ $\frac{9}{8}$ $\frac{13}{8}$ $\frac{1}{1}$

III $\frac{6}{5}$ $\frac{3}{2}$ $\frac{1}{1}$ $\frac{9}{8}$ $\frac{13}{8}$ $\frac{1}{1}$

* $\frac{9}{8}$ $\frac{6}{5}$ $\frac{1}{1}$ $\frac{9}{8}$ $\frac{13}{8}$ $\frac{1}{1}$

15.5

III 14/11 1/1 II 14/11 I 14/11

+7 +25 +25 +7

14/11 1/1 1/1

697

I

II

III

*

+27 +25 -35 -6 -24 +25 +29

3/2 1/1 13/8 7/4 11/8 1/1 9/8

-24 +23 +9 +11

7/4 13/8 6/5 9/8

+48 -24

III 13/8 7/4

701

I

II

III

*

-41 -24 +23 +48 +7

11/8 7/4 13/8 6/5 1/1

+27 -35 +25 +11 +29

3/2 13/8 1/1 5/4 9/8

-24 -35 +25

11/8 13/8 1/1

+27 -24 -35 -6 +23 +29

7/4 13/8 7/4 6/5 III 9/8

15.6

III 14/11 1/1 II 14/11 I 14/11

+25 +7 +25 +7 +25

14/11 1/1 14/11

705

I

II

III

*

-35 -6 -24 -35 +27 +29 -6

7/4 11/8 13/8 3/2 9/8 7/4 3/2

+9

3/2

+48

I 13/8

15.7

III 1/1 II 14/11 I

+7 +25 +25 +25 +7

14/11 1/1 14/11

709

I

+11 +27

5/4 3/2

II

+11 +25

5/4 1/1

III

-24 +23 +7 +48 +11 +23 -24

7/4 6/5 1/1 13/8 9/8 6/5 7/4

*

-24 +27

III 7/4 II 3/2

713

I

+7 -24 +48 +23 -24 +7 +9 -41

1/1 7/4 6/5 13/8 7/4 1/1 9/8 3/2 11/8

II

+27

3/2

III

-24

11/8

*

-35 -6 +29 +11

III 13/8 7/4 9/8 5/4

15.8

III 1/1 II 1/1 I

+25 +25 +7 +25

1/1 1/1 14/11

717

I

+27 +25 -35 +29 -24 +11 +29

3/2 1/1 13/8 9/8 11/8 3/2 9/8

II

-35 +25 +27 +11 +29 +27 -6 +11 +25 +29 -24 +27 +25 -35

1/1 3/2 5/4 9/8 3/2 7/4 5/4 1/1 9/8 11/8 3/2 1/1 13/8

III

-35 +11

III 13/8 5/4

721

I $\frac{5}{4}$ $\frac{1}{1}$

II $\frac{1}{1}$ $\frac{7}{4}$ $\frac{3}{2}$ $\frac{11}{8}$ $\frac{1}{1}$ $\frac{13}{8}$ $\frac{5}{4}$ $\frac{1}{1}$ $\frac{11}{8}$ $\frac{3}{2}$

III $\frac{5}{4}$ $\frac{9}{8}$

* $\frac{9}{8}$ $\frac{11}{8}$ $\frac{1}{1}$ $\frac{7}{4}$ $\frac{9}{8}$

16.1

III $\frac{9}{8}$ II $\frac{9}{8}$ I $\frac{1}{1}$

725

I $\frac{13}{8}$

II $\frac{5}{4}$

III $\frac{1}{1}$ $\frac{7}{4}$

* $\frac{3}{2}$ $\frac{5}{4}$ $\text{III}^{\frac{6}{5}}$ $\frac{6}{5}$ $\text{II}^{\frac{3}{2}}$

16.2

III $\frac{9}{8}$ II $\frac{1}{1}$ I $\frac{1}{1}$

729

I $\frac{3}{2}$ $\frac{7}{4}$ $\frac{1}{1}$

II $\frac{7}{4}$ $\frac{9}{8}$ $\frac{1}{1}$ $\frac{13}{8}$ $\frac{5}{4}$

III $\frac{13}{8}$ $\frac{1}{1}$ $\frac{9}{8}$

* $\frac{13}{8}$ $\frac{7}{4}$

to kill a monarch (seed:19800725)

[illegible]

16.3

III 9/8 II 9/8 I

+25 +29 +29 +25 +25

9/8 9/8 1/1

737

I

II

III

*

+29

9/8

-2

7/4

+44

III 6/5

Example 10.1 is a musical score for four staves, labeled I, II, III, and *. The score is written in a single system. Staff I is in treble clef, Staff II is in alto clef, Staff III is in bass clef, and Staff * is in treble clef. The music consists of a single melodic line across all staves, with various intervals and accidentals indicated. The intervals are labeled as follows: Staff I: +29, +11, +25, 9/8, 5/4, 1/1. Staff II: +11, -35, +25, 5/4, 13/8, 1/1. Staff III: +44, +29, 6/5, 1/1. Staff *: -20, 11/8, -35, 13/8. The score is a single system, and the music is written in a single melodic line across all staves.

16.4

16/13

III $\frac{9}{8}$ II $\frac{18}{13}$ I

+29 +25 +25 -35

1/1 1/1 16/13

(745)

I

II

III

*

-6 -2 +11

7/4 11/8 5/4

(749)

I

II

III

*

-35 +17 -24 +29 +31 +29 +33 +6 +44 +31 -20

1/1 11/8 11/8 9/8 3/2 1/1 13/8 6/5 11/8 3/2

16.5

16/13

III $\frac{18}{13}$ II $\frac{9}{8}$ I

+29 +25 -35 -35 +25

1/1 16/13 16/13

(753)

I

II

III

*

+11 -6 +27 -35 -2 -31 +33 +6

5/4 7/4 3/2 1/1 7/4 13/8 9/8 11/8 13/8

16.6

1/1

III

18/13

II

18/13

I

+29 -35

-35 +29

+25 +29

18/13

18/13

9/8

757

I

II

III

*

1/1

11/8

9/8

11/8

7/4

3/2

6/5

13/8

3/2

9/8

3/2

III^{13/8}

II^{6/5}

+29

-35

-35

+29

+25

+29

-31

-2

-20

+31

+44

-31

-2

-20

+29

+44

-2

-20

+29

+44

-31

-33

-33

+6

+44

16.7

1/1

III

18/13

II

18/13

I

-35 +29

+29 -35

+29 -35

18/13

18/13

18/13

761

I

II

III

*

7/4

1/1

11/8

1/1

5/4

13/8

3/2

6/5

11/8

9/8

1/1

7/4

11/8

3/2

III^{7/4}

-2

+17

-35

-48

-35

+6

+31

+44

-2

+33

+29

-20

+31

-2

765

I

II

III

*

7/4

9/8

1/1

13/8

11/8

3/2

13/8

II^{11/8}

3/2

13/8

+34

-31

-35

+6

+17

-33

+6

16.8

III 18/13 II 1/1 I
+29 -35 -35 +29 -35

18/13 18/13 1/1

(769)

I

II

III

*

III^{7/4}

3/2 9/8 11/8 1/1

3/2 11/8 3/2 1/1 9/8

13/8 11/8 3/2 7/4 5/4

+34

16.9

III 18/13 II 1/1 I
-35 +29 -35

1/1 1/1 1/1

(773)

I

II

III

*

II^{11/8} 3/2 III^{5/4}

11/8 3/2 7/4 11/8 6/5 13/8

3/2 11/8 9/8 1/1

16.10

III 1/1 II 1/1 I
-35 +29 -35

1/1 18/13 1/1

(777)

I

II

III

*

11/8 3/2

-65-

to kill a monarch (seed:19800725)

781

I

II

III

*

1/1 7/4 5/4 11/8 3/2 1/1 9/8

-35 +34 -48 +17 -33 -35 -31

9/8 3/2 1/1

7/4 13/8 7/4 3/2 11/8 5/4 3/2 13/8

+6 +34 +34 -33 +17 -48 -33 +6

-31 +17

III 9/8 11/8

785

I

II

III

*

13/8 7/4

+6 +34

-48 -35 +6 -31 +17

5/4 1/1 13/8 9/8 11/8

-35 -48 +6 -33 -31

1/1 5/4 13/8 1/1 3/2 9/8

789

I

II

III

*