

to kill a monarch

seed: 19800725

michael winter  
(berlin, germany; 2021)

1.1

III 1/1 II 1/1 I

+0 +0 +0

1/1 1/1 1/1

$\text{♩} = 60$

I

II

III

\*

+41 +16 +4 +0

13/8 6/5 9/8 1/1

+0 +4 +16 -49

III 1/1 9/8 6/5 11/8

⑤

+2 -31

3/2 7/4

1.2

+2

3/2

+4 -49 +2

11/8 9/8 3/2

+2 +41 -31 +0 +4 +16

3/2 13/8 7/4 1/1 9/8 6/5

⑨

+0 +4 +2

1/1 9/8 3/2

+16 -31 +0

6/5 7/4 1/1

+0 +41 -49 +2 -31

1/1 13/8 11/8 3/2 7/4

+4 -49 +2 +0

III 9/8 11/8 -1. 3/2 1/1

**1.3**

13

I  $+16$   
 $6/5$

II  $+16$   $+2$   $+4$   
 $6/5$   $3/2$   $9/8$

III  $+41$   $-49$   
 $11/8$   $13/8$

\*  $+41$   $-31$   $-49$   $+41$   $+16$   
 $III 13/8$   $7/4$   $11/8$   $13/8$   $6/5$

**1.4**

17

I  $+41$   $-31$   $-49$   $+2$   
 $13/8$   $7/4$   $11/8$   $3/2$

II  $-31$   $+0$   $-49$   $-31$   
 $7/4$   $1/1$   $11/8$   $7/4$

III  $+0$   $+16$   $+41$   $+2$   $-49$   
 $1/1$   $6/5$   $13/8$   $3/2$   $11/8$

\*  $+2$   $+4$   $-31$   $+0$   
 $3/2$   $9/8$   $III 7/4$   $1/1$

21

I  $+41$   $+0$   $-31$   $+2$   $+0$   $+2$   $+4$   $+16$   $-49$   
 $1/1$   $7/4$   $3/2$   $13/8$   $1/1$   $3/2$   $9/8$   $6/5$   $11/8$

II  $+41$   
 $13/8$

III  $-31$   $+0$   $+2$   
 $7/4$   $1/1$   $3/2$

\*  $+41$   $+2$   $+0$   $-49$   $+2$   $+16$   $+41$   $+0$   
 $13/8$   $3/2$   $1/1$   $11/8$   $3/2$   $6/5$   $13/8$   $1/1$   $9/8$

25 1.5

I -31 +0

7/4 1/1

II +2

3/2

III +4 -31 +16

9/8 7/4 6/5

\* -31 +2

7/4 III 3/2

29 1.6

I +4

9/8

II

III

\* +4 +16 +0 -49 +41

9/8 6/5 1/1 11/8 13/8

33 1.7

I +41 -31 +2

13/8 7/4 3/2

II +0 +16 +4 -49

1/1 6/5 9/8 11/8

III +2 +0 +41 -49

3/2 1/1 13/8 11/8

\* +16 -31 +0 +2

III 6/5 7/4 1/1 3/2

37 1.8

Staff I: +16, +0, +2, +41; 6/5, 1/1, 3/2, 13/8

Staff II: +0, +41; 1/1, 13/8

Staff III: -31, +16, +41, +2, -49; 7/4, 6/5, 1/1, 3/2, 13/8, 11/8, 3/2

Staff \*: -49, -31; III 11/8, 7/4

41 1.9

Staff I: -49, +4, +0; 11/8, 9/8, 1/1

Staff II: +4, +2; 9/8, 3/2

Staff III: -49, +0, +16; 11/8, 1/1, 6/5

Staff \*: +4, +0, +41, +0; III 9/8, 1/1, 13/8, 1/1

45

Staff I: -31, +2, +16, +41; 7/4, 3/2, 6/5, 13/8

Staff II: +16, +0, +16, +41, -31, +2, +0, +41; 6/5, 1/1, 6/5, 13/8, 7/4, 3/2, 1/1, 13/8

Staff III: -31, +4; 7/4, 9/8

Staff \*: -49, -31, +16, +4; III 11/8, 7/4, 6/5, 9/8

**1.10**

(49)

I  $\frac{9}{8}$  +4

II -49 -31 +2  
 $\frac{11}{8}$   $\frac{7}{4}$   $\frac{3}{2}$

III +41 +0 +16  
 $\frac{1}{1}$   $\frac{6}{5}$   $\frac{13}{8}$

\* +2 +0 -49  
 $\text{III} \frac{3}{2}$   $\frac{1}{1}$   $\frac{11}{8}$

**1.11**

(53)

I -49 +0  
 $\frac{1}{1}$   $\frac{11}{8}$

II +4 +41  
 $\frac{9}{8}$   $\frac{13}{8}$

III +2 -49 +4  
 $\frac{3}{2}$   $\frac{11}{8}$   $\frac{9}{8}$

\* +41 +0 -31 -49  
 $\frac{13}{8}$   $\frac{1}{1}$   $\text{III} \frac{7}{4}$   $\frac{11}{8}$

**1.12**

(57)

I +41 -31 +4 +2 +41 -49 +0 +2  
 $\frac{9}{8}$   $\frac{3}{2}$   $\frac{13}{8}$   $\frac{7}{4}$   $\frac{11}{8}$   $\frac{1}{1}$   $\frac{3}{2}$

II +0 +16  
 $\frac{1}{1}$   $\frac{6}{5}$

III -31 +4 +0 +41 +16 +0 +2 -49  
 $\frac{7}{4}$   $\frac{1}{1}$   $\frac{13}{8}$   $\frac{6}{5}$   $\frac{1}{1}$   $\frac{3}{2}$   $\frac{11}{8}$

\* +2 +16 -31 +4 -31  
 $\frac{3}{2}$   $\frac{6}{5}$   $\frac{7}{4}$   $\frac{9}{8}$   $\text{III} \frac{7}{4}$

61 -49

11/8

+4  
+2 -49 -31

3/2 11/8 7/4  
9/8

+4 -31 +16 +2 +0 +4

9/8 7/4 6/5 3/2 1/1 9/8

+41 -49 +0 +2 +41 +0

13/8 11/8 1/1 3/2 13/8 1/1

1.13

65 +16

6/5

+0

1/1

+41

13/8

-31 +4 +16

III 7/4 9/8 6/5

69 1.14

+4 -49

9/8 11/8

+0 -49 -31 +4

1/1 11/8 7/4 III 9/8

73 1.15

Staff I: +0, +41, -31  
Intervals: 1/1, 13/8, 7/4

Staff II: +2, +0, +16  
Intervals: 3/2, 1/1, 6/5

Staff III: -49, -31, +0, +41  
Intervals: 11/8, 7/4, 13/8, 1/1

Staff \*: +0  
Interval: 1/1

77

Staff I: +4, +2, +0, +16, +41, -49, +2, +4  
Intervals: 3/2, 1/1, 6/5, 13/8, 11/8, 3/2, 9/8

Staff II: -31, +41, -49, +4, +0, +16  
Intervals: 7/4, 13/8, 11/8, 9/8, 1/1, 6/5

Staff III: +16, +2, -31, +2  
Intervals: 6/5, 3/2, 7/4, 3/2

Staff \*: +2, -31, +4, +41, +16, +0  
Intervals: III<sup>3/2</sup>, 7/4, 9/8, 13/8, 6/5, 1/1

81 1.16

Staff I: +0, -49, +16, +2, -31, +0  
Intervals: 1/1, 11/8, 6/5, 3/2, 1/1, 7/4

Staff II: -31, +0, +2, +16  
Intervals: 7/4, 1/1, 3/2, 6/5

Staff III: +0, +4, -49  
Intervals: 1/1, 9/8, 11/8

Staff \*: +41, +2, +16, -49, +4  
Intervals: 13/8, 3/2, 6/5, 11/8, 7/4

85

I

II

III

\*

Intervals: +4, -49, 11/8, 9/8, +0, +16, +41, -31, 1/1, 6/5, 13/8, 7/4, +41, +0, +2, -31, +0, +16, +4, 13/8, 1/1, 3/2, 7/4, 1/1, 6/5, 9/8

1.17

89

I

II

III

\*

Intervals: -31, +41, +4, 7/4, 13/8, 9/8, +2, +4, +0, +2, +16, +4, +16, -31, -49, +16, +41, 3/2, 9/8, 6/5, 9/8, 1/1, 3/2, 13/8, 7/4, 11/8, 6/5, 13/8, -49, +2, -31, -49, 3/2, 11/8, 7/4, III 11/8

93

1.18

I

II

III

\*

Intervals: +41, +2, +0, +16, -31, +2, 13/8, 3/2, 1/1, 6/5, 13/8, 7/4, 3/2, +2, 3/2, +41, -31, +16, +0, +2, 13/8, 7/4, 6/5, 1/1, 3/2



to kill a monarch (seed:19800725)

97

I

II

III

\*

+0 -49 +4 -31 -49 +0 +16

1/1 11/8 9/8 7/4 11/8 1/1 6/5

+0 +16 +41 -31 -49 +2 +41 +4 -49 +16 +0

1/1 13/8 6/5 13/8 7/4 11/8 3/2 1/1 13/8 9/8 11/8 6/5 1/1 3/2

+2 +4 -31 +0 -49 +0

3/2 9/8 7/4 1/1 11/8 1/1

+16 -31 -49 +2 +41 +0 -49

III 6/5 7/4 11/8 3/2 13/8 1/1 11/8

1.19

101

I

II

III

\*

-31 +4 +0 -31 +16 -49 -31

7/4 9/8 3/2 1/1 7/4 6/5 11/8 7/4

+4 -31 +41 -49 +16 +0

9/8 7/4 13/8 11/8 7/4 6/5 1/1

+16 +2

6/5 3/2

+4 -49 +16 +0 +16 -31

III 9/8 11/8 6/5 1/1 6/5 7/4

105

1.20

I

II

III

\*

+2 +41 +0

3/2 13/8 1/1

+4 +0 +2

1/1 9/8 3/2

109 1.21

Staff I:  $\frac{9}{8}$ ,  $\frac{7}{4}$ ,  $\frac{6}{5}$ ,  $\frac{13}{8}$

Staff II:  $\frac{3}{2}$ ,  $\frac{13}{8}$ ,  $\frac{6}{5}$

Staff III:  $\frac{7}{4}$ ,  $\frac{13}{8}$

Staff \*:  $\text{III } \frac{13}{8}$ ,  $\frac{11}{8}$ ,  $\frac{6}{5}$ ,  $\frac{3}{2}$ ,  $\frac{1}{1}$

113

Staff I:  $\frac{3}{2}$ ,  $\frac{9}{8}$

Staff II:  $\frac{11}{8}$

Staff III:  $\frac{9}{8}$ ,  $\frac{1}{1}$ ,  $\frac{9}{8}$

Staff \*:  $\text{III } \frac{7}{4}$ ,  $\frac{9}{8}$ ,  $\frac{1}{1}$ ,  $\frac{11}{8}$ ,  $\frac{3}{2}$

117 1.22

Staff I:  $\frac{13}{8}$ ,  $\frac{9}{8}$ ,  $\frac{7}{4}$ ,  $\frac{13}{8}$ ,  $\frac{1}{1}$ ,  $\frac{11}{8}$ ,  $\frac{6}{5}$

Staff II:  $\frac{13}{8}$ ,  $\frac{9}{8}$ ,  $\frac{7}{4}$ ,  $\frac{13}{8}$ ,  $\frac{1}{1}$ ,  $\frac{11}{8}$ ,  $\frac{6}{5}$

Staff III:  $\frac{3}{2}$ ,  $\frac{6}{5}$ ,  $\frac{11}{8}$ ,  $\frac{7}{4}$

Staff \*:  $\frac{6}{5}$ ,  $\text{III } \frac{3}{2}$

121

1.23

III 7/4

125

3/2

129

1.24

III 11/8

133

1.25

Staff I: -31, +16, +4, +41

Staff II: +0, +41, +16, -31, +16

Staff III: +16

Staff \*: -49, +0, +16, -31, +4

Intervals: 7/4, 6/5, 9/8, 13/8, 1/1, 6/5, 7/4, 9/8, 6/5

137

Staff I: -49, -31

Staff II: -49, +0

Staff III: -31, +0

Staff \*: +0, +2, +0, +16, -49, -31, +16

Intervals: 7/4, 11/8, 11/8, 1/1, 7/4, 1/1, III 1/1, 3/2, 1/1, 6/5, 11/8, 1/1, 7/4, 6/5

1.26

141

Staff I: +41

Staff II: +4, -31, +16, -31, +2, +0

Staff III: -49, +41, +16, +4, +0, +16, -31, +2, +41

Staff \*: +4

Intervals: 13/8, 9/8, 7/4, 6/5, 7/4, 3/2, 1/1, 11/8, 13/8, 6/5, 9/8, 1/1, 6/5, 1/1, 7/4, 3/2, 1/1, 13/8, III 9/8

145 1.27

Staff I: Treble clef, key signature change to B-flat major, measure 145. Measure 146: Repeat sign. Measure 147: Key signature change to E-flat major. Measure 148: Key signature change to D major.

Staff II: Bass clef, measure 145. Measure 146: Repeat sign. Measure 147: Key signature change to E-flat major. Measure 148: Key signature change to D major.

Staff III: Bass clef, measure 145. Measure 146: Repeat sign. Measure 147: Key signature change to E-flat major. Measure 148: Key signature change to D major.

Staff \*: Treble clef, measure 145. Measure 146: Repeat sign. Measure 147: Key signature change to E-flat major. Measure 148: Key signature change to D major.

149 1.28

Staff I: Treble clef, key signature change to D major, measure 149. Measure 150: Key signature change to E-flat major. Measure 151: Key signature change to D major. Measure 152: Key signature change to E-flat major.

Staff II: Bass clef, measure 149. Measure 150: Key signature change to E-flat major. Measure 151: Key signature change to D major. Measure 152: Key signature change to E-flat major.

Staff III: Bass clef, measure 149. Measure 150: Key signature change to E-flat major. Measure 151: Key signature change to D major. Measure 152: Key signature change to E-flat major.

Staff \*: Treble clef, measure 149. Measure 150: Key signature change to E-flat major. Measure 151: Key signature change to D major. Measure 152: Key signature change to E-flat major.

153

Staff I: Treble clef, key signature change to E-flat major, measure 153. Measure 154: Key signature change to D major. Measure 155: Key signature change to E-flat major. Measure 156: Key signature change to D major.

Staff II: Bass clef, measure 153. Measure 154: Key signature change to D major. Measure 155: Key signature change to E-flat major. Measure 156: Key signature change to D major.

Staff III: Bass clef, measure 153. Measure 154: Key signature change to D major. Measure 155: Key signature change to E-flat major. Measure 156: Key signature change to D major.

Staff \*: Treble clef, measure 153. Measure 154: Key signature change to D major. Measure 155: Key signature change to E-flat major. Measure 156: Key signature change to D major.

157 **1.29**

I  $\frac{13}{8}$   $\frac{3}{2}$  +2 +41

II  $\frac{3}{2}$  +2 +16 +4 +0 -31 +0  $\frac{6}{5}$   $\frac{9}{8}$   $\frac{1}{1}$   $\frac{7}{4}$   $\frac{1}{1}$

III  $\frac{6}{5}$   $\frac{9}{8}$   $\frac{11}{8}$   $\frac{7}{4}$  +16 +4 -49 -31

\*  $\frac{11}{8}$   $\frac{7}{4}$  -49 +0 III  $\frac{1}{1}$

161

I +16 +0 +41  $\frac{6}{5}$   $\frac{1}{1}$   $\frac{13}{8}$

II -49 +41 +0 +2 +41 +0  $\frac{11}{8}$   $\frac{13}{8}$   $\frac{1}{1}$   $\frac{3}{2}$   $\frac{13}{8}$   $\frac{1}{1}$

III +0 +41  $\frac{1}{1}$   $\frac{13}{8}$

\*  $\frac{11}{8}$   $\frac{3}{2}$   $\frac{13}{8}$  +2 -49 +41

**1.30**

165

I -31  $\frac{7}{4}$

II +2  $\frac{3}{2}$

III +2  $\frac{3}{2}$

\*  $\frac{11}{8}$   $\frac{1}{1}$   $\frac{3}{2}$   $\frac{9}{8}$   $\frac{7}{4}$   $\frac{6}{5}$  +16 +0 +2 +4 -31 +16

173

1.32

I

II

III

\*

6/5 3/2 7/4

7/4 6/5 11/8 1/1 13/8 3/2 1/1

3/2

1/1 9/8 3/2 III<sup>1/1</sup>

The musical score for 'The Rose Tree' in F major is presented in four staves. The first staff (I) is in treble clef, the second (II) in alto clef, the third (III) in bass clef, and the fourth (marked with an asterisk) is in treble clef. The score includes various pitch bends and vibrato markings above the notes, indicating specific intervals and durations. The key signature is one flat (F major), and the time signature is 3/4.

**Staff I (Treble Clef):**

- Measure 1:  $+2$  (bend),  $3/2$  (vibrato)
- Measure 2:  $+0$  (bend),  $1/1$  (vibrato)
- Measure 3:  $+4$  (bend),  $13/8$  (vibrato)
- Measure 4:  $+16$  (bend),  $9/8$  (vibrato)
- Measure 5:  $+4$  (bend),  $6/5$  (vibrato)

**Staff II (Alto Clef):**

- Measure 1:  $+4$  (bend),  $9/8$  (vibrato)

**Staff III (Bass Clef):**

- Measure 1:  $-31$  (bend),  $7/4$  (vibrato)
- Measure 2:  $+0$  (bend),  $1/1$  (vibrato)
- Measure 3:  $+16$  (bend),  $6/5$  (vibrato)
- Measure 4:  $-49$  (bend),  $11/8$  (vibrato)

**Staff \* (Treble Clef):**

- Measure 1:  $+16$  (bend),  $6/5$  (vibrato)
- Measure 2:  $+41$  (bend),  $13/8$  (vibrato)
- Measure 3:  $-49$  (bend),  $11/8$  (vibrato)
- Measure 4:  $+0$  (bend),  $1/1$  (vibrato)
- Measure 5:  $+4$  (bend),  $9/8$  (vibrato)

181 1.33

I  $11/8$   $1/1$

II  $7/4$   $3/2$

III  $1/1$   $6/5$   $13/8$

\*  $III^{7/4}$   $11/8$   $13/8$   $1/1$

185 1.34

I  $13/8$

II  $6/5$   $1/1$   $13/8$   $7/4$   $3/2$   $11/8$

III  $3/2$   $1/1$   $11/8$   $3/2$   $9/8$

\*  $9/8$   $3/2$   $7/4$   $III^{6/5}$   $11/8$

189

I  $9/8$   $1/1$

II  $9/8$

III

\*  $13/8$   $1/1$   $7/4$   $3/2$



**1.35**

193

Staff I: -31 +0 +2 +16 +0 -49 +0 +41 +16 -31 +2  
7/4 1/1 3/2 6/5 1/1 11/8 1/1 13/8 6/5 7/4 3/2

Staff II: +41  
13/8

Staff III: -31 +2  
7/4 3/2

Staff \*: +4 -31 +41 +16 +0 +41  
III 9/8 7/4 13/8 6/5 1/1 13/8

**1.36**

197

Staff I: +4  
9/8

Staff II:

Staff III: +16  
6/5

Staff \*: +2  
3/2

**201**

Staff I: +0 +2 +16 -49 -31 -49  
1/1 3/2 6/5 11/8 7/4 11/8  
1/1 13/8

Staff II: +0 -49 +4  
1/1 11/8 9/8

Staff III: +2 +0 +41 -49 +4 +2 -49  
3/2 1/1 13/8 11/8 9/8 3/2 11/8

Staff \*: +4 -49 +0  
III 9/8 11/8 1/1

205 1.37

Staff I: +2, +0, +16, 3/2, 1/1, 6/5

Staff II: +16, -49, -31, +16, +0, -31, 6/5, 11/8, 3/2, 7/4, 6/5, 1/1, 7/4

Staff III: -31, +0, +41, -49, 7/4, 13/8, 1/1, 11/8

Staff \*: +4, -31, +16, +0, -49, +41, 7/4, 6/5, 1/1, 9/8, III 11/8, 13/8

209 1.38

Staff I: +4, -49, 9/8, 11/8

Staff II: 9/8, 11/8

Staff III: +2, 3/2, +16, 6/5

Staff \*: -31, +2, +4, +0, 7/4, 3/2, 9/8, III 1/1

213

Staff I: +0, -31, +41, +16, +4, +2, 7/4, 13/8, 6/5, 9/8, 3/2, 1/1

Staff II: +4, +41, +4, -31, +2, +0, -49, -31, +16, -49, 9/8, 13/8, 9/8, 7/4, 3/2, 1/1, 11/8, 7/4, 6/5, 11/8

Staff III: +4, +0, -49, 9/8, 1/1, 11/8

Staff \*: -49, +16, +41, +0, -31, 11/8, 13/8, 6/5, 1/1, 7/4

217 1.39

I +0 1/1 +16 6/5

II +41 13/8 +0 1/1

III +4 9/8

\* -49 III 11/8 +0 1/1

221 1.40

I +2 -49 -31 +0 +16 6/5

II -49 11/8

III +2 3/2

\* +2 3/2 +4 9/8

225 1.41

I +41 13/8 +2 3/2 +16 6/5

II +0 1/1 +2 3/2 +0 1/1 +4 9/8 -31 7/4

III +41 13/8 +0 1/1 +2 3/2 -49 11/8 -31 7/4 +2 3/2

\* -31 III 7/4 +16 6/5 +2 3/2 -49 13/8 +41 11/8

229

Staff I: 229, 230, 231, 232

Staff II: 229, 230, 231, 232

Staff III: 229, 230, 231, 232

Staff \*: 229, 230, 231, 232

1.42

233

Staff I: 233, 234, 235, 236

Staff II: 233, 234, 235, 236

Staff III: 233, 234, 235, 236

Staff \*: 233, 234, 235, 236

1.43

237

Staff I: 237, 238, 239, 240

Staff II: 237, 238, 239, 240

Staff III: 237, 238, 239, 240

Staff \*: 237, 238, 239, 240

241

6/5 1/1 13/8

6/5 13/8

3/2 11/8 13/8 7/4 6/5 9/8 11/8

7/4 3/2 6/5 9/8 1/1 11/8 6/5

2.1

9/8 1/1 3/2 11/8 1/1 7/4 3/2

7/4 1/1 9/8 1/1

13/8 1/1 3/2 6/5 7/4 1/1

6/5 II 7/4 III 13/8 7/4

2.2

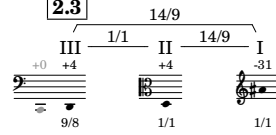
13/8 1/1 9/8 3/2

7/4 3/2

13/8 3/2 7/4

1/1 6/5 III 9/8 II 9/8

2.3



253

I

-16

6/5

-31

1/1

II

+4

+44

1/1

13/8

+8

9/8

III

+4

-49

9/8

11/8

+16

6/5

\*

+20

6/5

+38

I 7/4

257

I

+9

+20

+38

13/8

11/8

7/4

II

+20

+6

+4

6/5

3/2

1/1

-45

11/8

III

+4

1/1

\*

+6

+44

-16

III 3/2

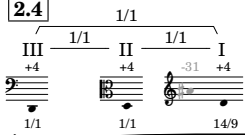
13/8

I 6/5

+8

III 9/8

2.4



261

I

+6

-45

+4

+20

+4

+20

+6

+8

-45

+44

+4

+8

-27

3/2

11/8

1/1

6/5

1/1

6/5

3/2

11/8

13/8

9/8

1/1

9/8

7/4

II

-27

-27

+6

+8

+4

7/4

7/4

3/2

9/8

1/1

III

+6

3/2

\*

-45

III 11/8

265

I: +20, 6/5, 3/2

II: +8, +44, +6, +4, 9/8, 13/8, 1/1, 3/2

III: +44, -45, 13/8, 11/8, 6/5

\*: +4, +20, -27, 1/1, 6/5, 11/8, 7/4

269

I: +8, 1/1, 7/4, 1/1, 9/8, 13/8

II: +4, 3/2, 9/8

III: +8, 9/8

\*: +6, +44, +46, 3/2, 13/8, II 13/8

3.1: III +4, II +6, I +8

273

I: -23, -41, +10, 7/4, 11/8, 3/2

II: -43, -8, +8, +6, -25, 11/8, 5/4, 3/2, 1/1, 7/4

III: +4, 1/1

\*: -45, +6, +44, -27, -23, III 11/8, 3/2, 13/8, 7/4, I 7/4

**3.2**

III 1/1 II 3/2 I

+4 +6 +6 +8 +4

277 3/2 1/1 9/8

I

II

III

\*

9/8 6/5 1/1 11/8 3/2

+8 +20 +4 -45 +6

9/8 3/2 5/4

+10 +8 -8

13/8 3/2 7/4

+46 +8 -25

-8 +8 +46 -45

III 5/4 3/2 13/8 I 11/8

**3.3**

III 13/12 II 13/12 I

+6 +44 +6 +4 +6

281 13/12 1/1 3/2

I

II

III

\*

7/4 1/1 5/4 9/8

-25 +6 -8 +10

7/4 1/1

+44

1/1

+10 -8 -43 +8 -25

II 9/8 5/4 11/8 3/2 7/4

**3.4**

III 13/12 II 13/12 I

+44 +6 +6 +44 +6 +44

285 13/12 13/12 13/12

I

II

III

\*

13/8 11/8 3/2 1/1 13/8 3/2 9/8

-15 -4 +46 +44 -15 +46 +48

13/8 11/8 3/2 1/1 13/8 3/2 9/8

-43 +46

11/8 13/8

-15 +10

III 13/8 III 9/8



**3.5**

III  $\frac{1}{1}$  II  $\frac{13}{12}$  I

+6 +44 +6 +44

1/1 13/12 1/1

289

I  $\frac{7}{4}$  1/1 13/8 +44 -15

II +8 3/2

III +6 +8 +10 3/2 9/8 1/1

\* -8 5/4 -43 +48 3/2 I  $\frac{13}{8}$  III  $\frac{9}{8}$  III  $\frac{11}{8}$  I  $\frac{9}{8}$

**3.6**

III  $\frac{1}{1}$  II  $\frac{13}{12}$  I

+6 +44 +6 +44 +44 +6

13/12 13/12 13/12

293

I +46 3/2 11/8 -43

II -43 +6 -8 +10 11/8 1/1 5/4 9/8 13/8 -15

III +6 +8 +10 3/2 1/1 9/8 3/2 5/4 +46 +31

\* +8 3/2 I  $\frac{13}{8}$  +13 7/4 +10 I  $\frac{9}{8}$  +48 III  $\frac{9}{8}$

**3.7**

III  $\frac{1}{1}$  II  $\frac{1}{1}$  I

+44 +44 +6 +44

1/1 1/1 13/12

297

I +10 9/8

II +13 7/4

III +13 7/4

\* +48 -43 -4 9/8 I  $\frac{11}{8}$  III  $\frac{11}{8}$

301

Staff I: +44, +31, +46, +13, -4. Ratios: 1/1, 5/4, 3/2, 7/4, 11/8.

Staff II: (Empty)

Staff III: -4, -15, +48, +46, +44. Ratios: 11/8, 13/8, 9/8, 3/2, 1/1.

Staff \*: +44, +13, +48, -15, +44, +31, +46. Ratios: III 1/1, 7/4, 9/8, 11/8, 13/8, 1/1, 5/4, 3/2.

305

Staff I: -15, +48, +44, +46. Ratios: 13/8, 1/1, 9/8, 3/2.

Staff II: +44, +46, +31, +44, +13, -15, -4, +46. Ratios: 1/1, 3/2, 5/4, 1/1, 7/4, 1/1, 13/8, 11/8, 3/2.

Staff III: +13, -15, +48. Ratios: 7/4, 13/8, 9/8.

Staff \*: -4, +13, +44, +48, +13. Ratios: 11/8, 7/4, 1/1, 9/8, 7/4.

4.1

III 16/11 II 16/9 I

III 16/11 II 16/9 I

309

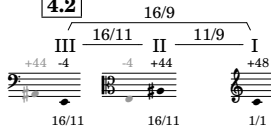
Staff I: +17, +48, -50, +0, +48. Ratios: 7/4, 1/1, 3/2, 11/8, 1/1.

Staff II: (Empty)

Staff III: +46, +44. Ratios: 3/2, 1/1.

Staff \*: +0, -15, +13, +48. Ratios: I 11/8, III 13/8, 7/4, 9/8.

4.2



313

I

II

III

\*

-35 -4 -18 -2 -4 -35 +48 -4 +44

1/1 5/4 3/2 1/1 7/4 9/8 13/8 1/1 11/8

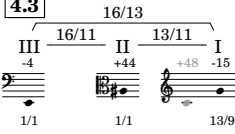
7/4

11/8

-35 -4

II 7/4 III 11/8

4.3



317

I

II

III

\*

-48 +0 -50 +35 -11 -50 +48 +0

9/8 11/8 3/2 5/4 13/8 3/2 1/1 11/8

-35 +0

7/4 9/8

-15 -50 +47 +36 +36 -35 -15

II 13/8 I 3/2 III 11/8 13/8 III 13/8 7/4 II 13/8

321

I

II

III

\*

-11 -15 -4 +46 +44 +31 -15

9/8 13/8 11/8 3/2 1/1 5/4 13/8

-18

5/4

-11 +47 -2 +36 -35 -15 -11

I 9/8 III 11/8 3/2 7/4 II 13/8 I 9/8

13/8 27-

**4.4**

III  $\frac{1}{1}$  II  $\frac{1}{1}$  I

-4 +44 -4 -15 -4

1/1 16/11 13/11

(325)

I  $\frac{5}{4}$   $\frac{15}{8}$   $\frac{1}{1}$

II

III -4 -35 +0 -2 +0 -4 +35 +36 -18 -35

$\frac{1}{1}$   $\frac{7}{4}$   $\frac{9}{8}$   $\frac{3}{2}$   $\frac{9}{8}$   $\frac{1}{1}$   $\frac{11}{8}$   $\frac{13}{8}$   $\frac{5}{4}$   $\frac{7}{4}$

\*

+47

III  $\frac{11}{8}$

(329)

I +0 -35 -2 +0 -2 -18 -35

$\frac{9}{8}$   $\frac{3}{2}$   $\frac{5}{4}$   $\frac{7}{4}$   $\frac{9}{8}$

II -35 +0 -4 +36 -2 -4 -35 +0 -18 -4

$\frac{7}{4}$   $\frac{9}{8}$   $\frac{1}{1}$   $\frac{13}{8}$   $\frac{3}{2}$   $\frac{1}{1}$   $\frac{7}{4}$   $\frac{9}{8}$   $\frac{5}{4}$   $\frac{1}{1}$

III +47 -4 -4 -35 -4 +0 -35

$\frac{1}{1}$   $\frac{11}{8}$   $\frac{1}{1}$   $\frac{7}{4}$   $\frac{1}{1}$   $\frac{9}{8}$   $\frac{7}{4}$

\*

-4 -35 +0 -35 -18 -4 -2

$\frac{1}{1}$   $\frac{7}{4}$   $\frac{9}{8}$   $\frac{7}{4}$   $\frac{5}{4}$   $\frac{1}{1}$   $\frac{3}{2}$

**5.1**

III  $\frac{12}{7}$  II  $\frac{8}{7}$  I

-4 -35 -4 -2 -4

$\frac{8}{7}$   $\frac{3}{2}$   $\frac{1}{1}$

(333)

I +47

$\frac{11}{8}$

II

III -2 -18

$\frac{3}{2}$   $\frac{5}{4}$

\*

+47 -35 -4 -18

$\frac{11}{8}$   $\frac{7}{4}$   $\frac{1}{1}$   $\frac{5}{4}$

337

Staff I: 1/1, 3/2, 1/1, 3/2

Staff II: 3/2, 1/1, 13/8, 1/1

Staff III: 1/1, 3/2, 1/1

Staff \*: 11/8, 13/8, 13/8

5.2

Staff I: 1/1, 3/2, 8/7, 1/1, 5/4, 13/8, 7/4, 1/1, 11/8, 7/4

Staff II: 11/8

Staff III: 9/8, 5/4, 7/4, 13/8, 3/2

Staff \*: 11/8, 3/2, 11/8

5.3

Staff I: 3/2, 9/8, 1/1, 13/8, 5/4

Staff II: 9/8, 5/4

Staff III: 11/8

Staff \*: 13/8, 7/4, 13/8, 3/2, 5/4

349

Staff I: -4, +36<sup>-2</sup>, -4, +47, -35, -18, +0. Ratios: 1/1, 13/8, 3/2, 1/1, 11/8, 7/4, 5/4, 9/8.

Staff II: +38, +36, +23, +40, +5, +36. Ratios: 3/2, 1/1, 5/4, 9/8, 7/4, 1/1.

Staff III: +33, -35, -32, -33. Ratios: 7/4, 1/1, 9/8, 3/2.

Staff \*: +5, +33, +36. Ratios: III 13/8, 7/4, I 13/8.

5.4

Staff I: -4, 1/1. Ratios: 1/1, 14/13, 14/13, 1/1, 16/13.

Staff II: -23. Ratios: 13/8.

Staff III: -35, +36, -4, +36. Ratios: 1/1, 1/1, 16/13.

Staff \*: +40. Ratios: II 9/8.

357

Staff I: -12, +38. Ratios: 11/8, 3/2.

Staff II: +38, +23, -12, +36. Ratios: 3/2, 5/4, 11/8, 1/1.

Staff III: +16, -49, -32, +5, +33, -35, +33, +5. Ratios: 5/4, 11/8, 9/8, 13/8, 7/4, 1/1, 7/4, 13/8.

Staff \*: +23, -12, +38. Ratios: 5/4, 11/8, 3/2.

**5.5**

III 1/1 II 1/1 I

-35 +36 +36 +36

14/13 1/1 1/1

361

I

II

III

\*

+36

1/1

+23 +5 +38

5/4 7/4 3/2

+40 -23 +38 +5

9/8 13/8 3/2 7/4

III

365

I

II

III

\*

-23 +5 -12 +23 +36 +5 +38

7/4 11/8 5/4 1/1 7/4 3/2

+38 +36 +23

3/2 1/1 5/4

-23 +23 +36 +38 -12 +36 +40 +23 -12

13/8 5/4 1/1 3/2 11/8 1/1 9/8 5/4 11/8

+40 -12 +36 +23 -23 +5 +40 +38 +36 -12 +40

11/8 9/8 1/1 5/4 11/8 7/4 9/8 13/8 3/2 1/1 11/8 9/8

**6.1**

III 7/4 II 3/2 7/6 I

+36 +5 +36 +36 +38

7/4 1/1 3/2

369

I

II

III

\*

+38 +7 +42 -46

1/1 7/4 9/8 6/5

+5 -26

1/1 7/4

-23 +21

II 13/8 III 6/5

-31-

**6.2**

III  $\frac{3}{2}$  II  $\frac{7}{4}$  I

+5 +36 +36 +38 +38 +5

7/4 3/2 7/6

(373) -10 +38 -21

I  $\frac{1}{1}$   $\frac{11}{8}$   $\frac{13}{8}$

II +40 -12

$\frac{9}{8}$   $\frac{11}{8}$

III +9 +5 +7 +21 +5 +46

$\frac{9}{8}$   $\frac{1}{1}$   $\frac{3}{2}$   $\frac{6}{5}$   $\frac{1}{1}$   $\frac{13}{8}$

\* +40 -12 +38 -23 +21

$\text{II}^{\frac{9}{8}}$   $\text{I}^{\frac{7}{4}}$   $\frac{3}{2}$   $\frac{13}{8}$   $\text{III}^{\frac{6}{5}}$

$\text{II}^{\frac{11}{8}}$

(377)

I -26 +21 +46

$\frac{7}{4}$   $\frac{6}{5}$   $\frac{13}{8}$

II +7

$\frac{7}{4}$

III +38 +5 +36 -23 +36

$\frac{3}{2}$   $\frac{7}{4}$   $\frac{1}{1}$   $\frac{13}{8}$   $\frac{1}{1}$

\* +21 +40 -21 +7 +38

$\text{I}^{\frac{6}{5}}$   $\text{II}^{\frac{3}{2}}$   $\frac{13}{8}$   $\frac{7}{4}$   $\text{III}^{\frac{3}{2}}$

**6.3**

III  $\frac{3}{2}$  II  $\frac{13}{8}$  I

+36 +38 +5 -23

$\frac{1}{1}$   $\frac{1}{1}$   $\frac{14}{13}$

(381) -21 -23 -19 -21 +28 +46 -23

$\frac{3}{2}$   $\frac{1}{1}$   $\frac{9}{8}$   $\frac{3}{2}$   $\frac{7}{4}$   $\frac{1}{1}$   $\frac{11}{8}$

II -21

$\frac{13}{8}$

III +38 -12 +5 +23 +36

$\frac{3}{2}$   $\frac{11}{8}$   $\frac{7}{4}$   $\frac{5}{4}$   $\frac{1}{1}$

\* -23 -19 -10 +40 -21

$\text{III}^{\frac{13}{8}}$   $\text{I}^{\frac{9}{8}}$   $\text{II}^{\frac{11}{8}}$   $\frac{3}{2}$   $\frac{13}{8}$



**6.4**

III 13/12 II 13/12 I

+36 -23 +38 -23 +38

13/8 1/1 13/12

385

I

II

III

\*

7/4 III<sup>13/8</sup> III<sup>9/8</sup>

3/2 6/5 13/8

3/2 6/5

11/8

7/4 III<sup>13/8</sup> III<sup>9/8</sup>

**6.5**

III 1/1 II 1/1 I

-23 +38 +38 +38

13/12 1/1 1/1

389

I

II

III

\*

7/4 9/8 1/1 13/8 1/1 11/8 3/2 11/8 1/1 3/2

13/8 9/8 1/1 13/8 9/8 7/4

11/8 11/8 3/2 II<sup>9/8</sup> III<sup>13/8</sup> II<sup>11/8</sup> 3/2

13/8 9/8 1/1 13/8 9/8 7/4

393

I

II

III

\*

7/4 1/1 9/8 3/2 6/5 13/8 1/1 11/8 3/2 6/5

1/1 9/8 13/8 9/8 3/2 7/4 11/8 1/1 9/8 13/8 6/5 3/2

9/8 1/1 11/8 1/1 13/8 1/1 6/5 3/2 11/8 7/4 1/1 13/8

III<sup>3/2</sup> 1/1 11/8 7/4 6/5 1/1 3/2 13/8 9/8 7/4 11/8 3/2 1/1

3/2 6/5 11/8 3/2 6/5

11/8 3/2 1/1

**7.1**

III 16/13 II 13/12 I

+38 -21 +38 +38 +40

16/13 1/1 4/3

997

I -21 +38 +7 -46 -10 +38

13/8 7/4 1/1 7/4 6/5 11/8 1/1

II

III -46

6/5

\*

13/8

1/1 9/8

13/8

II<sup>13/8</sup>

**7.2**

III 13/12 II 16/13 I

-21 +38 +40 +40 +38

1/1 4/3 4/3

401

I +42 +27 +40

3/2 5/4 1/1

II -46 +40 +38 +7 -10 +40 +38 +40 -21

6/5 3/2 1/1 7/4 3/2 1/1 3/2 13/8

III -19 -17 -35 -17 -21 +19 +48

3/2 9/8 5/4 9/8 1/1 13/8 7/4

\*

7/4 I<sup>3/2</sup> II<sup>6/5</sup> III<sup>13/8</sup>

405

I -10 +7 +42 -21

11/8 7/4 9/8 13/8

II +40 +42 +27

1/1 3/2 5/4

III +30 -21 -17 +48 -19 -21 -17 +48

11/8 1/1 13/8 7/4 3/2 1/1 9/8 7/4

\*

13/8 I<sup>7/4</sup> II<sup>5/4</sup> III<sup>11/8</sup> 13/8

**7.3**

III 1/1 II 13/12 I

-21 +40 +40 +38 -21

13/12 1/1 16/13

409

I

II

III

\*

+30 11/8 +27 5/4 +40 1/1 -8 11/8

+19 13/8 +44 9/8 +27 5/4 +30 11/8

-21 1/1 +48 7/4

+44 +40 9/8 1/1 +9 7/4

**7.4**

III 1/1 II 13/12 I

+40 +40 -21 -21

1/1 13/12 1/1

413

I

II

III

\*

-35 5/4 -21 3/2 11/8 -21 1/1 -19 3/2 +48 7/4 -35 5/4

-17 9/8 -35 5/4 -19 3/2 -35 5/4 +48 7/4 +30 11/8 -19 3/2

-19 13/8 +9 7/4 +42 3/2 +44 9/8 +9 7/4

+42 13/8 +9 7/4 +9 7/4

III<sup>3/2</sup> III<sup>7/4</sup>

**7.5**

III 1/1 II 1/1 I

+40 -21 -21 -21

13/12 1/1 1/1

417

I

II

III

\*

+19 13/8

-21 III<sup>1/1</sup>

421

I

II

III

\*

-17 -21 +30 +30 -21 -19 -17 -35 +48

5/4 11/8 1/1 3/2 13/8 9/8 5/4 7/4

9/8 1/1 11/8 13/8 5/4 3/2 1/1

-21 +19 -35 -21

1/1 13/8 9/8 5/4 3/2 1/1

-21

1/1

-35 -19 +30 +48 +19

5/4 3/2 11/8 7/4 13/8

-19 -17 +30 +48 -35 -19 -21 -35 +19 -17 -35 -21 +19

5/4 7/4 9/8 11/8 7/4 5/4 3/2 1/1 5/4 13/8 9/8 5/4 7/4 3/2 1/1 13/8

8.1

III 6/5 II 3/2 I

-21 -19 -21 -35 -21

3/2 5/4 1/1

425

I

II

III

\*

-21 +19

1/1 13/8

-19

1/1

+30 -35 +19

11/8 5/4 13/8

8.2

III 3/2 II 6/5 I

-19 -35 -21 -21 -35

1/1 5/4 5/4

429

I

II

III

\*

-19 +30

3/2 11/8

+16

11/8

-17 -15 -19 +50

3/2 9/8 1/1 7/4

-4 +34

III 6/5 II 7/4

433

I

II

III

\*

8.3

1/1

III 1/1 II 1/1 I

-19 -21 -19 -35 -19

437

I

II

III

\*

441

I

II

III

\*

7/4 6/5 1/1 3/2 9/8 1/1 13/8 7/4 1/1 3/2 13/8 9/8 3/2

+34 -19 -33 -31 -35 +6 +34 -33

+19 -17

+32

+30 +50 -15 -4 +32

III 7/4 II 11/8 III 9/8 6/5 11/8

1/1 3/2 6/5

-19

1/1 3/2

-17

III 3/2 13/8 6/5 11/8 3/2 1/1 9/8 6/5 1/1

-19 +32 -17 -4 -15 +21

+50 +21 -4 -19 +32 -17 -4 -15

-4 -15 +21 +50 -19

6/5 9/8 13/8 7/4 1/1

-15 +21 +50 +32 -17 -4 -19 +32 +21 -15

13/8 9/8 7/4 11/8 3/2 6/5 1/1 11/8 13/8 9/8

**9.1**

III  $\frac{16}{11}$  II  $\frac{16}{11}$  I

-19 +32 -19 -15 -19

16/11 16/9 1/1

(445)

I

II  $\frac{7}{4}$   $\frac{3}{2}$

III  $\frac{3}{2}$   $\frac{5}{4}$

\*  $\frac{1}{1}$   $\frac{3}{2}$   $\frac{13}{8}$   $\frac{11}{8}$   $\frac{8}{5}$

-19 +50 -13 +34 +18 -17 +21 -13 +46

**9.2**

III  $\frac{16}{11}$  II  $\frac{1}{1}$  I

+32 -15 -19 -19 +32

1/1 16/9 16/11

(449)

I  $\frac{1}{1}$   $\frac{11}{8}$

II  $\frac{11}{8}$   $\frac{13}{8}$   $\frac{9}{8}$   $\frac{7}{4}$

III

\*  $\frac{11}{8}$

-19 +32 +36 +21 -15 +50

**9.3**

III  $\frac{16}{13}$  II  $\frac{13}{11}$  I

+32 +21 -19 +32

13/11 1/1 1/1

(453)

I  $\frac{4}{3}$

II  $\frac{11}{8}$

III  $\frac{8}{5}$   $\frac{3}{2}$

\*  $\frac{8}{5}$   $\frac{7}{4}$   $\frac{11}{8}$   $\frac{13}{8}$

+46 +1 -17 +21

457

I  $\frac{9}{8}$   $\frac{5}{4}$   $\frac{8}{5}$

II  $\frac{3}{2}$   $\frac{1}{1}$   $\frac{13}{8}$

III  $\frac{9}{8}$   $\frac{1}{1}$   $\frac{7}{4}$

\*  $\frac{1}{4/3}$   $\frac{3}{2}$   $\frac{8}{5}$   $\frac{7}{4}$

9.4

III  $\frac{13}{11}$  II  $\frac{1}{1}$  I  $\frac{13}{11}$

461

I  $\frac{7}{4}$   $\frac{4}{3}$

II  $\frac{1}{1}$

III

\*  $\frac{10}{9/8}$   $\frac{21}{13/8}$   $\frac{30}{4/3}$   $\frac{37}{6/5}$

465

I  $\frac{1}{1}$   $\frac{11}{8}$   $\frac{6}{5}$   $\frac{3}{2}$   $\frac{7}{4}$   $\frac{9}{8}$

II  $\frac{9}{8}$   $\frac{8}{5}$   $\frac{5}{4}$

III  $\frac{3}{2}$   $\frac{1}{1}$

\*  $\frac{46}{8/5}$   $\frac{46}{8/5}$   $\frac{23}{3/2}$   $\frac{10}{7/4}$

**9.5**

III  $\frac{1}{1}$  II  $\frac{1}{1}$  I

+21 +32 +21 +21

1/1 13/11 1/1

(469)

I

II

III

+

+37

6/5

-27

11/8

-38

13/8

+36

II  $\frac{9}{8}$

+30

4/3

-10

III  $\frac{7}{4}$

(473)

I

II

III

+

-38

13/8

+25

9/8

-27

11/8

+37

6/5

+25

+21

-10

+23

1/1

9/8

3/2

7/4

+21

-38

1/1

13/8

11/8

+37

6/5

-10

7/4

+21

3/2

+23

-10

7/4

13/8

3/2

-27

11/8

+37

6/5

+23

13/8

3/2

+21

1/1

-10

7/4

+25

9/8

+23

3/2

+37

6/5

**10.1**

III  $\frac{6}{5}$  II  $\frac{96}{55}$  I

+21 +37 +21 +21 -27

6/5 1/1 16/11

(477)

I

II

III

+

-27

11/8

-27

1/1

-25

3/2

+25

9/8

+21

1/1

-10

7/4

+25

9/8

-38

13/8

-27

II  $\frac{11}{8}$



**10.2** 96/55

III 16/11 II 6/5 I

+37 +21 +21 -27 -27 +37

6/5 16/11 96/55

(481)

I 7/4 1/1

II +21 +37 -27

1/1 6/5 11/8

III +37 +41 +37

1/1 9/8 1/1

\* -47 -24 -38

III 6/5 I 9/8 II 13/8

(485)

I +41 -23 +39 -12 +6 +37 +23 -12 +39 -23

9/8 13/8 3/2 11/8 7/4 1/1 5/4 11/8 3/2 13/8

II -27 +41 -24 -27 +13 -25 -24

1/1 7/4 9/8 1/1 13/8 3/2 9/8

III +37 +23 -10 +21 +37

6/5 11/8 3/2 7/4 1/1 6/5

\* -23 +39

I 3/2 13/8

**10.3** 1/1

III 1/1 II 1/1 I

+21 +37 -27 +37 +37

6/5 96/55 1/1

(489)

I 9/8

II +24

11/8

III

\* +25 +41 +41

III 9/8 I 9/8 III 9/8

493

Staff I:  $\frac{1}{1}$ ,  $\frac{7}{4}$   $\frac{3}{2}$ ,  $\frac{5}{4}$   $\frac{13}{8}$   $\frac{11}{8}$ ,  $\frac{1}{1}$

Staff II:  $\frac{5}{4}$ ,  $\frac{1}{1}$   $\frac{3}{2}$ ,  $\frac{7}{4}$   $\frac{3}{2}$ ,  $\frac{13}{8}$

Staff III:  $\frac{1}{1}$ ,  $\frac{7}{4}$ ,  $\frac{13}{8}$

Staff \*:  $\frac{3}{2}$   $\frac{1}{1}$   $\frac{3}{2}$ ,  $\frac{7}{4}$   $\frac{1}{1}$   $\frac{13}{8}$ ,  $\frac{5}{4}$   $\frac{11}{8}$   $\frac{1}{1}$ ,  $\frac{3}{2}$   $\frac{13}{8}$ ,  $\frac{9}{8}$

497

Staff I:  $\frac{9}{8}$ ,  $\frac{5}{4}$ ,  $\frac{3}{2}$ ,  $\frac{7}{4}$

Staff II:  $\frac{1}{1}$ ,  $\frac{11}{8}$ ,  $\frac{5}{4}$

Staff III: (Empty staff)

Staff \*:  $\frac{7}{4}$ ,  $\frac{9}{8}$ ,  $\frac{5}{4}$ ,  $\frac{1}{1}$