

# to kill a monarch

seed: 19800725

michael winter  
(berlin, germany; 2021)

1.1

III 1/1 II 1/1 I

+0 +0 +0

1/1 1/1 1/1

$\text{♩} = 60$

I

II

III

\*

+41 +16 +4 +0

13/8 6/5 9/8 1/1

-31 +2 -31 +0

III 7/4 3/2 7/4 1/1

⑤

+2 -31

3/2 7/4

1.2

+2

3/2

+4 -49 +2

11/8 9/8 3/2

+16 +0 -31 +41 +2 +16

6/5 1/1 7/4 13/8 3/2 6/5

⑨

+0 +4 +2

1/1 9/8 3/2

+16 -31 +0

6/5 7/4 1/1

+0 +41 -49 +2 -31

1/1 13/8 11/8 3/2 1/1 7/4

+4 -49 +2 +0

III 9/8 11/8 -1- 3/2 1/1

**1.3**

13

I  $+16$   
 $6/5$

II  $+16$   $+2$   $+4$   
 $6/5$   $3/2$   $9/8$

III  $+41$   $-49$   
 $11/8$   $13/8$

\*  $+41$   $-31$   $-49$   $+41$   $+16$   
 $III 13/8$   $7/4$   $11/8$   $13/8$   $6/5$

**1.4**

17

I  $+41$   $-31$   $-49$   $+2$   
 $13/8$   $7/4$   $11/8$   $3/2$

II  $-31$   $+0$   $-49$   $-31$   
 $7/4$   $1/1$   $11/8$   $7/4$

III  $+0$   $+16$   $+41$   $+2$   $-49$   
 $1/1$   $6/5$   $13/8$   $3/2$   $11/8$

\*  $+2$   $+4$   $-31$   $+0$   
 $3/2$   $9/8$   $III 7/4$   $1/1$

**21**

I  $+41$   $+0$   $-31$   $+2$   $+0$   $+2$   $+4$   $+16$   $-49$   
 $1/1$   $7/4$   $3/2$   $13/8$   $1/1$   $3/2$   $9/8$   $6/5$   $11/8$

II  $+41$   
 $13/8$

III  $-31$   $+0$   $+2$   
 $7/4$   $1/1$   $3/2$

\*  $+41$   $+2$   $+0$   $-49$   $+2$   $+16$   $+41$   $+0$   
 $13/8$   $3/2$   $1/1$   $11/8$   $3/2$   $6/5$   $13/8$   $1/1$   $9/8$

25 1.5

I -31 +0  
7/4 1/1

II +2  
3/2

III +4 -31 +16  
9/8 7/4 6/5

\* -31 +2  
7/4 III 3/2

29 1.6

I +4  
9/8

II

III

\* +4 +16 +0 -49 +41  
9/8 6/5 1/1 11/8 13/8

33 1.7

I +41 -31 +2  
13/8 7/4 3/2

II +0 +16 +4 -49  
1/1 6/5 9/8 11/8

III +2 +0 +41 -49  
3/2 1/1 13/8 11/8

\* +16 -31 +0 +2  
III 6/5 7/4 1/1 3/2

37

1.8

Staff I: +16, +0, +2, +41; 6/5, 1/1, 3/2, 13/8

Staff II: +0, +41; 1/1, 13/8

Staff III: -31, +16, +41, +2, -49; 7/4, 6/5, 1/1, 3/2, 13/8, 11/8, 3/2

Staff \*: -49, -31; III 11/8, 7/4

41

1.9

Staff I: -49, +4, +0; 11/8, 9/8, 1/1

Staff II: +4, +2; 9/8, 3/2

Staff III: -49, +0, +16; 11/8, 1/1, 6/5

Staff \*: +4, +0, +41, +0; III 9/8, 1/1, 13/8, 1/1

45

Staff I: -31, +2, +16, +41; 7/4, 3/2, 6/5, 13/8

Staff II: +16, +0, +16, +41, -31, +2, +0, +41; 6/5, 1/1, 6/5, 13/8, 7/4, 3/2, 1/1, 13/8

Staff III: -31, +4; 7/4, 9/8

Staff \*: -49, -31, +16, +4; III 11/8, 7/4, 6/5, 9/8

**1.10**

(49)

I  $\frac{9}{8}$  +4

II  $\frac{11}{8}$  -49  $\frac{7}{4}$  -31 +2

III  $\frac{1}{1}$   $\frac{6}{5}$   $\frac{13}{8}$  +0 +41 +16

\*  $\text{III} \frac{3}{2}$  +2 +0  $\frac{1}{1}$  -49  $\frac{11}{8}$

**1.11**

(53)

I  $\frac{1}{1}$   $\frac{11}{8}$  -49 +0

II  $\frac{9}{8}$  +4  $\frac{13}{8}$  +41

III  $\frac{3}{2}$  +2  $\frac{11}{8}$  -49  $\frac{9}{8}$  +4

\*  $\frac{13}{8}$  +41  $\frac{1}{1}$  +0  $\text{III} \frac{7}{4}$  -31  $\frac{11}{8}$  -49

**1.12**

(57)

I  $\frac{9}{8}$   $\frac{3}{2}$   $\frac{13}{8}$   $\frac{7}{4}$  +41 +2 -31 +41 -49 +0 +2  $\frac{3}{2}$

II  $\frac{1}{1}$  +0  $\frac{6}{5}$  +16

III  $\frac{7}{4}$  -31  $\frac{1}{1}$   $\frac{9}{8}$  +4 +0  $\frac{13}{8}$   $\frac{6}{5}$  +41 +16 +0 +2 -49  $\frac{11}{8}$

\*  $\frac{3}{2}$  +2  $\frac{6}{5}$  +16  $\frac{7}{4}$  -31  $\frac{9}{8}$  +4  $\text{III} \frac{7}{4}$  -31

61 -49

I 11/8

II +4 +2 -49 -31

3/2 11/8 7/4

9/8

III +4 -31 +16 +2 +0 +4

9/8 7/4 6/5 3/2 1/1 9/8

\* +41 -49 +0 +2 +41 +0

13/8 11/8 1/1 3/2 13/8 1/1

1.13

65 +16

I 6/5

II +0

1/1

III +41

13/8

\* -31 +4 +16

III 7/4 9/8 6/5

69 1.14

I

II +4 -49

9/8 11/8

III

\* +0 -49 -31 +4

1/1 11/8 7/4 III 9/8

73 1.15

Staff I: +0, +41, -31  
Intervals: 1/1, 13/8, 7/4

Staff II: +2, +0, +16  
Intervals: 3/2, 1/1, 6/5

Staff III: -49, -31, +0, +41  
Intervals: 11/8, 7/4, 13/8, 1/1

Staff \*: +0  
Interval: 1/1

77

Staff I: +4, +2, +0, +16, +41, -49, +2, +4  
Intervals: 3/2, 1/1, 6/5, 13/8, 11/8, 3/2, 9/8

Staff II: -31, +41, -49, +4, +0, +16  
Intervals: 7/4, 13/8, 11/8, 9/8, 1/1, 6/5

Staff III: +16, +2, -31, +2  
Intervals: 16/5, 3/2, 7/4, 3/2

Staff \*: +2, -31, +4, +41, +16, +0  
Intervals: III<sup>3/2</sup>, 7/4, 9/8, 13/8, 6/5, 1/1

81 1.16

Staff I: +0, -49, +16, +2, -31, +0  
Intervals: 1/1, 11/8, 6/5, 3/2, 1/1, 7/4

Staff II: -31, +0, +2, +16  
Intervals: 7/4, 1/1, 3/2, 6/5

Staff III: +0, +4, -49  
Intervals: 1/1, 9/8, 11/8

Staff \*: +41, +2, +16, -49, +4  
Intervals: 13/8, 3/2, 6/5, 11/8, 7/4

85

II +4 -49 11/8 9/8

III +0 +16 +41 -31 1/1 6/5 13/8 7/4

\* +41 +0 +2 -31 +0 +16 +4 13/8 1/1 3/2 7/4 1/1 6/5 9/8

1.17

89

II -31 +41 +4 7/4 13/8 9/8

III +2 +4 +0 +2 +16 +4 +16 -31 -49 +16 +41 3/2 9/8 6/5 9/8 1/1 3/2 13/8 7/4 11/8 6/5 13/8

\* -49 +2 -31 -49 3/2 11/8 7/4 III 11/8

93

I +41 +2 +0 +16 -31 +2 13/8 3/2 1/1 6/5 13/8 7/4 3/2

II +2 3/2

III

\* +41 -31 +16 +0 +2 13/8 7/4 6/5 1/1 3/2

1.18



97

I

II

III

\*

+0 -49 +4 -31 -49 +0 +16

1/1 11/8 9/8 7/4 11/8 1/1 6/5

+0 +16 +41 -31 -49 +2 +41 +4 -49 +16 +0

1/1 13/8 13/8 7/4 11/8 3/2 1/1 13/8 9/8 11/8 6/5 1/1 3/2

+2 +4 -31 +0 -49 +0

3/2 9/8 7/4 1/1 11/8 1/1

+16 -31 -49 +2 +41 +0 -49

III 6/5 7/4 11/8 3/2 13/8 1/1 11/8

1.19

101

I

II

III

\*

-31 +4 +0 -31 +16 -49 -31

7/4 9/8 3/2 1/1 7/4 6/5 11/8 7/4

+4 -31 +41 -49 +16 +0

9/8 7/4 13/8 11/8 7/4 6/5 1/1

+16 +2

6/5 3/2

+4 -49 +16 +0 +16 -31

III 9/8 11/8 6/5 1/1 6/5 7/4

105

1.20

I

II

III

\*

+2 +41 +0

3/2 13/8 1/1

+4 +0 +2

1/1 9/8 3/2

109 1.21

Staff I: 9/8, 7/4, 6/5, 13/8, 1.21

Staff II: 3/2, 13/8, 6/5

Staff III: 7/4, 13/8

Staff \*: III 13/8, 11/8, 6/5, 3/2, 1/1

113

Staff I: 3/2, 9/8

Staff II: 11/8

Staff III: 9/8, 1/1, 9/8

Staff \*: III 7/4, 9/8, 1/1, 11/8, 3/2

117 1.22

Staff I: 1.22

Staff II: 13/8, 9/8, 7/4, 13/8, 1/1, 11/8, 6/5, 1/1

Staff III: 3/2, 6/5, 11/8, 7/4

Staff \*: 6/5, 3/2

121

1.23

III  $\frac{7}{4}$

125

III  $\frac{7}{4}$

129

1.24

III  $\frac{11}{8}$

133

1.25

Staff I: 7/4, 6/5, 9/8, 13/8

Staff II: 1/1, 13/8, 6/5, 7/4, 6/5

Staff III: 6/5

Staff \*: 11/8, 1/1, 6/5, 7/4, 9/8

137

Staff I: 7/4, 11/8

Staff II: 11/8, 1/1

Staff III: 7/4, 1/1

Staff \*: III 1/1, 3/2, 1/1, 6/5, 11/8, 1/1, 7/4, 6/5

1.26

141

Staff I: 13/8

Staff II: 9/8, 7/4, 6/5, 7/4, 3/2, 1/1

Staff III: 11/8, 13/8, 6/5, 9/8, 1/1, 6/5, 1/1, 7/4, 3/2, 1/1, 13/8

Staff \*: III 9/8

145 1.27

Staff I: Treble clef, key signature change to B-flat major. Measure 145: whole note, B-flat. Measure 146: whole note, B-flat. Measure 147: whole note, B-flat. Measure 148: whole note, B-flat.

Staff II: Bass clef. Measure 145: whole note, B-flat. Measure 146: whole note, B-flat. Measure 147: whole note, B-flat. Measure 148: whole note, B-flat.

Staff III: Bass clef. Measure 145: whole note, B-flat. Measure 146: whole note, B-flat. Measure 147: whole note, B-flat. Measure 148: whole note, B-flat.

Staff \*: Treble clef. Measure 145: whole note, B-flat. Measure 146: whole note, B-flat. Measure 147: whole note, B-flat. Measure 148: whole note, B-flat.

149 1.28

Staff I: Treble clef. Measure 149: whole note, B-flat. Measure 150: whole note, B-flat. Measure 151: whole note, B-flat. Measure 152: whole note, B-flat.

Staff II: Bass clef. Measure 149: whole note, B-flat. Measure 150: whole note, B-flat. Measure 151: whole note, B-flat. Measure 152: whole note, B-flat.

Staff III: Bass clef. Measure 149: whole note, B-flat. Measure 150: whole note, B-flat. Measure 151: whole note, B-flat. Measure 152: whole note, B-flat.

Staff \*: Treble clef. Measure 149: whole note, B-flat. Measure 150: whole note, B-flat. Measure 151: whole note, B-flat. Measure 152: whole note, B-flat.

153

Staff I: Treble clef. Measure 153: whole note, B-flat. Measure 154: whole note, B-flat. Measure 155: whole note, B-flat. Measure 156: whole note, B-flat.

Staff II: Bass clef. Measure 153: whole note, B-flat. Measure 154: whole note, B-flat. Measure 155: whole note, B-flat. Measure 156: whole note, B-flat.

Staff III: Bass clef. Measure 153: whole note, B-flat. Measure 154: whole note, B-flat. Measure 155: whole note, B-flat. Measure 156: whole note, B-flat.

Staff \*: Treble clef. Measure 153: whole note, B-flat. Measure 154: whole note, B-flat. Measure 155: whole note, B-flat. Measure 156: whole note, B-flat.

157 **1.29**

13/8 3/2 3/2 6/5 9/8 1/1 7/4 1/1 6/5 9/8 11/8 7/4 11/8 III 1/1 7/4

161

6/5 1/1 13/8 11/8 13/8 1/1 3/2 13/8 1/1 1/1 13/8 11/8 3/2 13/8

**1.30** 165

7/4 3/2 3/2 III 6/5 1/1 3/2 9/8 7/4 6/5

169 1.31

I: 13/8, 9/8, 3/2, 1/1, 6/5, 11/8, 9/8

II: 9/8

III: 6/5, 1/1

\*: 3/2, 1/1, 11/8, 13/8, III 7/4

173 1.32

I: 6/5, 3/2, 7/4

II: 7/4, 6/5, 11/8, 1/1, 13/8, 3/2, 1/1

III: 3/2

\*: 1/1, 9/8, 3/2, III 1/1

177

I: 3/2, 1/1, 13/8, 9/8, 6/5

II: 9/8

III: 7/4, 1/1, 9/8, 6/5, 11/8

\*: 6/5, 13/8, 11/8, 1/1, 9/8

[illegible]

185

I

+41

13/8

II

+16

+0

+41 -31 -49 +2

6/5

1/1

13/8 7/4 3/2

11/8

III

+2

+0

+2

-49

+4

3/2

1/1

11/8

3/2

9/8

\*

+4

+2 -31

+16

-49

9/8

3/2 7/4

III 6/5

11/8

1.34

[illegible]



**1.35**

193

I

II

III

\*

+41

13/8

-31 +0

7/4 1/1

+2 +16 +0 -49 +0 +41

3/2 6/5 1/1 11/8 1/1 13/8

+16

-31 +2

7/4 3/2

+4

III 9/8

7/4 13/8

+16 +0 +41

6/5 1/1 13/8

**1.36**

197

I

II

III

\*

+4

9/8

+16

6/5

+2

3/2

**201**

I

II

III

\*

+0 +2 +16

1/1 3/2 6/5

+0 +41

-49 -31

11/8 7/4

1/1 13/8

-49

11/8

+0 -49

1/1 11/8

9/8

+2 +0

3/2 1/1

+41

13/8

-49

11/8

+4 +2

9/8 3/2

-49

11/8

+4

III 9/8

-49

11/8

+0

1/1

205 1.37

I  $\frac{3}{2}$   $\frac{1}{1}$   $\frac{6}{5}$

II  $\frac{6}{5}$   $\frac{11}{8}$   $\frac{7}{4}$   $\frac{6}{5}$   $\frac{1}{1}$   $\frac{7}{4}$

III  $\frac{7}{4}$   $\frac{13}{8}$   $\frac{1}{1}$   $\frac{11}{8}$

\*  $\frac{7}{4}$   $\frac{6}{5}$   $\frac{1}{1}$   $\frac{9}{8}$   $\text{III}$   $\frac{11}{8}$   $\frac{13}{8}$

Intervallic notation: +2, +0, +16, -31, -49, -31, +16, +0, -31, -31, +41, -49, +41

209 1.38

I  $\frac{9}{8}$   $\frac{11}{8}$

II

III  $\frac{3}{2}$   $\frac{6}{5}$

\*  $\frac{7}{4}$   $\frac{3}{2}$   $\frac{9}{8}$   $\text{III}$   $\frac{1}{1}$

Intervallic notation: +4, -49, +2, +16, -31, +2, +4, +0

213

I  $\frac{7}{4}$   $\frac{13}{8}$   $\frac{6}{5}$   $\frac{9}{8}$   $\frac{3}{2}$   $\frac{1}{1}$

II  $\frac{9}{8}$   $\frac{13}{8}$   $\frac{9}{8}$   $\frac{7}{4}$   $\frac{3}{2}$   $\frac{1}{1}$   $\frac{11}{8}$   $\frac{7}{4}$   $\frac{6}{5}$   $\frac{11}{8}$

III  $\frac{9}{8}$   $\frac{1}{1}$   $\frac{11}{8}$

\*  $\frac{11}{8}$   $\frac{13}{8}$   $\frac{6}{5}$   $\frac{1}{1}$   $\frac{7}{4}$

Intervallic notation: +0, -31, +41, +16, +4, +2, +4, +41, -49, -31, +2, +0, -31, +16, -49, +4, +0, -49, -49, +16, +41, +0, -31

217 1.39

I  $\frac{1}{1}$   $\frac{6}{5}$  +0 +16

II  $\frac{13}{8}$   $\frac{1}{1}$  +41 +0

III  $\frac{9}{8}$  +4

\*  $\text{III } \frac{11}{8}$   $\frac{1}{1}$  -49 +0

221 1.40

I  $\frac{3}{2}$   $\frac{11}{8}$   $\frac{7}{4}$   $\frac{1}{1}$   $\frac{6}{5}$  +2 -49 -31 +0 +16

II  $\frac{11}{8}$  -49

III  $\frac{3}{2}$  +2

\*  $\frac{3}{2}$   $\frac{9}{8}$  +2 +4

225 1.41

I  $\frac{13}{8}$   $\frac{3}{2}$   $\frac{6}{5}$  +41 +2 +16

II  $\frac{1}{1}$   $\frac{3}{2}$   $\frac{1}{1}$   $\frac{9}{8}$   $\frac{7}{4}$  +0 +2 +0 +4 -31

III  $\frac{13}{8}$   $\frac{1}{1}$   $\frac{3}{2}$   $\frac{11}{8}$   $\frac{7}{4}$   $\frac{3}{2}$  +41 +0 +2 -49 -31 +2

\*  $\text{III } \frac{7}{4}$   $\frac{6}{5}$   $\frac{3}{2}$   $\frac{13}{8}$   $\frac{11}{8}$  -31 +16 +2 -49 +41

229

Staff I: 229, 230, 231, 232

Staff II: 229, 230, 231, 232

Staff III: 229, 230, 231, 232

Staff \*: 229, 230, 231, 232

1.42

233

Staff I: 233, 234, 235, 236

Staff II: 233, 234, 235, 236

Staff III: 233, 234, 235, 236

Staff \*: 233, 234, 235, 236

1.43

237

Staff I: 237, 238, 239, 240

Staff II: 237, 238, 239, 240

Staff III: 237, 238, 239, 240

Staff \*: 237, 238, 239, 240

241

Staff I: 6/5, 1/1, 13/8

Staff II: 6/5, 13/8

Staff III: 3/2, 11/8, 13/8, 7/4, 6/5, 9/8, 11/8

Staff \*: 7/4, 3/2, 6/5, 9/8, 1/1, 11/8, 6/5

2.1

III 13/9, II 9/8, I 1/1

245

Staff I: 1/1

Staff II: 1/1, 11/8, 9/8

Staff III: 3/2, 1/1

Staff \*: I 1/1, 9/8, III 9/8, II 13/8, III 6/5, I 3/2

2.2

III 1/1, II 13/9, I 1/1

249

Staff I: 3/2

Staff II: 1/1

Staff III: 7/4, 6/5

Staff \*: 7/4, I 1/1, 9/8, III 9/8

2.3

1/1 1/1 1/1 I

III 1/1 II 1/1 I

+4 +4 +0 +4

1/1 1/1 9/8

253

I

II

III

\*

+8 +20 +6 -27 +6 +4

6/5 9/8 3/2 7/4 3/2 1/1

+44

13/8

+20 +2

6/5 I<sup>3/2</sup>

257

I

II

III

\*

+4 -45 +20 +44 +8 +4 +6 -27

1/1 11/8 6/5 13/8 9/8 1/1 3/2 7/4

+4 -45 +20 +6

11/8 1/1 6/5 3/2

+6

3/2

+4 -45 +8

1/1 9/8 11/8

+20 +4 -45 +6 -27 +4 -45 +20

III<sup>6/5</sup> 1/1 11/8 3/2 7/4 11/8 6/5 1/1

261

I

II

III

\*

+44

13/8

-45 +8 +44 -27 +4 +6

11/8 9/8 13/8 7/4 1/1 3/2

+20 +4 -27 +44 +8 -45 +4 +6 +8 +6 +8

1/1 7/4 13/8 9/8 11/8 1/1 3/2 9/8 3/2 9/8

-45 +6 +44 +4 -27 +8 +20 -45

11/8 3/2 13/8 1/1 7/4 9/8 11/8 6/5

-22-

**3.1**

III  $\frac{13}{8}$  II  $\frac{1}{1}$  I

+4 +4 +44 +4

1/1  $\frac{13}{8}$  1/1

(265)

I  $\frac{11}{8}$  -45

II +48 +46  $\frac{9}{8}$   $\frac{3}{2}$

III +44 -45 +20 -27 +6  $\frac{13}{8}$   $\frac{11}{8}$   $\frac{6}{5}$   $\frac{7}{4}$   $\frac{3}{2}$

\*  $\frac{13}{8}$  +44  $\text{III}^{\frac{13}{8}}$

**3.2**

III  $\frac{3}{2}$  II  $\frac{13}{12}$  I

+4 +6 +44 +4 +4 +44

$\frac{3}{2}$   $\frac{13}{8}$   $\frac{13}{8}$

(269)

I +13  $\frac{7}{4}$

II -40 -45  $\frac{6}{5}$   $\frac{11}{8}$

III

\* -27  $\frac{7}{4}$  -40  $\text{I}^{\frac{6}{5}}$

(273)

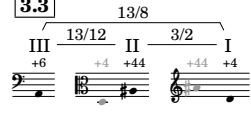
I +48 -40 +46 +44 +44 -15 +13  $\frac{9}{8}$   $\frac{6}{5}$   $\frac{3}{2}$   $\frac{1}{1}$   $\frac{1}{1}$   $\frac{13}{8}$   $\frac{7}{4}$

II +6 +4 +44 +8 -27 -45 +20 +4 +6  $\frac{1}{1}$   $\frac{13}{8}$   $\frac{9}{8}$   $\frac{7}{4}$   $\frac{11}{8}$   $\frac{6}{5}$   $\frac{1}{1}$   $\frac{3}{2}$

III +6 -25  $\frac{1}{1}$   $\frac{7}{4}$

\* -40 +8 -25 +46 +44  $\frac{6}{5}$   $\text{III}^{\frac{3}{2}}$   $\text{I}^{\frac{3}{2}}$   $\text{II}^{\frac{13}{8}}$   $\text{III}^{\frac{7}{4}}$

3.3



277

I

II

III

\*

1/1

13/8

13/8

3/2

+6

+44

1/1

+22

6/5

-27

-40

7/4

I<sup>6/5</sup>

-4

II<sup>11/8</sup>

281

I

II

III

\*

6/5

+20

-15

13/8

-4

11/8

+44

1/1

+6

1/1

+8

III<sup>3/2</sup>

-15

II<sup>13/8</sup>

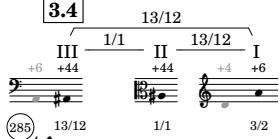
-27

I<sup>7/4</sup>

-43

III<sup>11/8</sup>

3.4



285

I

II

III

\*

13/12

1/1

3/2

+10

9/8

+6

1/1

+48

9/8

-15

13/8

+46

-40

+13

-15

3/2

6/5

7/4

13/8

-15

13/8

+48

-4

+8

-15

+10

+48

-4

+8

-15

III<sup>9/8</sup>

11/8

I<sup>3/2</sup>

I<sup>9/8</sup>

III<sup>9/8</sup>

11/8

I<sup>3/2</sup>

III<sup>13/8</sup>

-24-



289

III 3.5 1/1 1/1 1/1 I

+44 +44 +6 +44

11/8 13/8 13/8

+46 -4 +44 -40 -15

3/2 11/8 1/1 9/8 6/5 13/8

+10 +48

9/8 III 9/8

293

+13

7/4

-4 -40 -4 +48 +44 -40 +13 -4 +46 -40

11/8 1/1 6/5 11/8 9/8 1/1 11/8 3/2 6/5 7/4 6/5

-4

11/8

-40 +13

III 6/5 7/4

297

III 4.1 13/11 16/11 16/13 I

+44 +44 -4 +44 -15

+48 +44 +13 +48 +46

9/8 1/1 7/4 9/8 3/2

-15

13/8

-15 +48 +44 -40 +44 -40 +13 +46 +48 -4 +13

6/5 1/1 6/5 7/4 3/2 9/8 11/8 7/4

+44 -15 +44 +13 -4 +46 -15 +48 +44 -40 +46 +13 +44 -15

1/1 13/8 1/1 7/4 11/8 3/2 13/8 9/8 1/1 6/5 3/2 7/4 1/1 13/8

-25-

301

Staff I: 11/8 1/1 7/4 1/1 13/8

Staff II: 3/2 5/4 1/1 3/2 5/4 3/2 11/8

Staff III: 3/2 13/8

Staff \*: 9/8 6/5 7/4

4.2

Staff I: 1/1 9/8 3/2 11/8

Staff II: 1/1 9/8 7/4 11/8

Staff III: 1/1 9/8 6/5 3/2 1/1 9/8 7/4

Staff \*: 3/2 9/8 3/2 11/8 13/8 7/4

4.3

Staff I: 13/8

Staff II: 13/8 1/1 3/2 7/4 11/8 13/8

Staff III: 13/8 3/2

Staff \*: 1/1 7/4 11/8 1/1 3/2 5/4

313

I

-15 -29 -46 -11 -15 +25 -13 -15 -46 -29

1/1 5/4 7/4 9/8 1/1 13/8 3/2 1/1 7/4 5/4

II

-11 -29 +25 -13

9/8 5/4 13/8 3/2 1/1

III

\*

+25 -11 -15 -46

13/8 9/8 1/1 7/4

5.1

III 16/13 II 18/13 I

-15 +25 -15 -15 -11

16/13 1/1 9/8

317

I

+5 +29 -11 -42 -11 +29

6/5 13/8 1/1 7/4 1/1 13/8

II

+25 -29 -15 -29 -11 +36

5/4 13/8 1/1 5/4 9/8 11/8

III

-23 +25 +29 -34 +27 +29 -6

11/8 1/1 9/8 3/2 13/8 3/2 9/8 1/1 7/4

\*

+29 -11 -29 +5

III 9/8 II 9/8 5/4 I 6/5

5.2

III 9/8 II 9/8 I

+25 -15 -15 -11

16/13 9/8 1/1

321

I

-7 +5

9/8 6/5

II

-11 -9

1/1 3/2

III

-29

5/4

\*

+5 +25 -9 -7 +5

II 6/5 III 13/8 II 3/2 9/8 6/5

**5.3**

III 1/1 II 1/1 I

-15 -11 -11

9/8 1/1 1/1

(325)

I

II

III

\*

-11 +5 -13

9/8 13/8 1/1 6/5 4/3

-9 -13 -42 -9 +5 -11 -7 -9 -42

3/2 4/3 7/4 3/2 6/5 1/1 9/8 3/2 7/4

-42 -11 -13 -9

7/4 1/1 4/3 13/8 3/2

+29 -13 -11

13/8 4/3 1/1

+5 -42

III 7/4 6/5

(329)

I

II

III

\*

-11 -7 -11 -13 -11

1/1 9/8 13/8 3/2 6/5 1/1 7/4 3/2

-9 +29 -13 -42

3/2 13/8 4/3 7/4

-9 -13 +29 -11 -42 +5 -7 -42 -11

4/3 3/2 13/8 1/1 7/4 6/5 9/8 7/4 1/1

**6.1**

III 27/16 II 3/2 I

-11 -11 -7 -11 -13

1/1 9/8 3/2

(333)

I

II

III

\*

-7

9/8

+5

6/5

**6.2**

27/16

**6.3**

27/16

**6.4**

III 3/2 II 9/8 I

-13 -9 -7 -13

9/8 1/1 1/1

(349)

I

II

III

\*

11/8 5/4 9/8 1/1 13/8 11/8 5/4 3/2

-3 -5 +44

9/8 3/2 11/8

+31 -7 -9 -5 -40 -7

13/8 3/2 1/1 9/8 7/4 3/2

+27 -7 -3 -40 -9

I<sup>13/8</sup> III<sup>3/2</sup> II<sup>9/8</sup> III<sup>7/4</sup> I<sup>9/8</sup>

(353)

I

II

III

\*

11/8 1/1

-19 +33 -7

15/8 13/8 1/1

-9 +42

1/1 11/8

-27 +38 +27 -7 -3

5/4 11/8 13/8 III<sup>3/2</sup> II<sup>9/8</sup>

**6.5**

III 9/8 II 9/8 I

-9 -13 -7 -9 -13 -9

9/8 3/2 9/8

(357)

I

II

III

\*

13/8 7/4 1/1 3/2 9/8

-5 -9 -7 -5

9/8 1/1 3/2 1/1

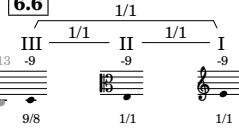
+27 -27 -13

13/8 5/4 1/1

+31 -40 -5 +38

II<sup>13/8</sup> 7/4 9/8 III<sup>11/8</sup>

6.6



361

I: 13/8, 1/1, -9

II: -23, 5/4

III: -5, 9/8

\*: +27, 13/8, +31, -7, -40, 13/8, -5, 9/8

365

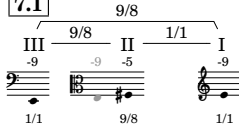
I: -40, -7, +42, -5, -23, -40, -7, -9, +42

II: -40, -7, +42, -7, -9, -5

III: -40, +31, +42, -23, -7, -9, -5, -23, -7, -40, +31, -23, -9

\*: -23, +42, +31, -5, -23, -7, -40, -9, +42, -7, +31

7.1



369

I: -9, -40, 1/1, 7/4

II: -40, 7/4

III: -40, 7/4, +42, 11/8, -7, 3/2

\*: -40, 7/4, -23, 11/8, -7, 3/2

I +31 -23 -5 -7 -5 +42  
13/8 5/4 9/8 3/2 9/8 11/8

II +35 +46 -3 +10 -5 -3 -5 -3  
13/8 11/8 3/2 6/5 9/8 1/1 3/2 1/1 3/2

III +31  
13/8

\* -7 +42 +31 7 +31  
11/8 13/8 3/2 13/8

The musical score for 'The Wind' by Gustav Mahler is presented in a four-staff format. The top staff (I) is in treble clef, the second staff (II) is in bass clef, the third staff (III) is in bass clef, and the fourth staff (\*) is in treble clef. The score includes various musical notations such as notes, rests, and accidentals. Time signatures are indicated above the staves: 7/2, 5/4, 10/9, 9/8, and 1/1. The score is divided into measures by vertical bar lines. The first measure of the first staff is marked with a circled number 377. The score is written in a key signature of one sharp (F#).

[illegible]



7.4

20/13

7.5

1/1

7.6

III 1/1 II 1/1 I +31

-23 +31 20/13 1/1 1/1

997

I +31 +35 +18 +0 +33

1/1 9/8 5/4 7/4 3/2

II +35

9/8

III -21

3/2

\* -28 -37 +18

II<sup>13/8</sup> III<sup>5/4</sup> 5/4 II<sup>9/8</sup>

401

I -28

13/8

+0 -17 +31

7/4 11/8 1/1

II +0 +18

7/4 5/4

-28 +31

13/8 1/1

III -17 +31 -28

11/8 1/1 13/8

\* -17 +35

III<sup>11/8</sup> 9/8

+31 +33

1/1 3/2

+35 -28 +31 +0 +18 +31

9/8 13/8 1/1 7/4 5/4 1/1

+33

3/2

405

I +35 +31

9/8 1/1

II +18

5/4

+0 -17 +35

7/4 11/8 9/8

III +0 +33

7/4 3/2

+18

5/4

\* -17

11/8

+35

9/8

**8.1**

III  $\frac{11}{9}$  II  $\frac{9}{8}$  I

+31 +35 +31 -17 +31

9/8 11/8 1/1

409

I  $\frac{3}{2}$   $\frac{5}{4}$

II

III  $\frac{13}{8}$

\*  $\frac{1}{1}$   $\frac{13}{8}$   $\frac{3}{2}$

+33

+18

-24

-28

+37

**8.2**

III  $\frac{11}{9}$  II  $\frac{9}{8}$  I

+35 -17 +31

1/1 1/1 1/1

413

I  $\frac{13}{8}$   $\frac{5}{4}$   $\frac{13}{8}$

II  $\frac{3}{2}$   $\frac{7}{4}$   $\frac{5}{4}$

III

\*  $\frac{1}{7/4}$   $\frac{11}{8}$   $\frac{15}{8}$   $\frac{15}{8}$   $\frac{13}{8}$   $\frac{7}{4}$

-28

+18

-15

-31

-48

+0

+34

+24

+24

+23

-48

417

I  $\frac{7}{4}$   $\frac{9}{8}$

II  $\frac{1}{1}$   $\frac{9}{8}$   $\frac{7}{4}$   $\frac{13}{8}$   $\frac{3}{2}$   $\frac{5}{4}$

III  $\frac{1}{1}$   $\frac{9}{8}$   $\frac{1}{1}$   $\frac{5}{4}$   $\frac{15}{8}$   $\frac{3}{2}$   $\frac{4}{3}$

\*  $\frac{9}{8}$   $\frac{13}{8}$   $\frac{5}{4}$   $\frac{11}{8}$   $\frac{15}{8}$   $\frac{13}{8}$   $\frac{7}{4}$

+0

+35

-17

+23

-13

-48

+23

-15

-31

+35

+39

+35

+22

+24

+37

+33

-13

-28

-31

+34

+24

+23

-48

**8.3** 1/1

III 1/1 II 1/1 I

+35 -17 -17 +31 -17

11/9 1/1 11/8

421

I 11/8 +34

II 9/8 1/1 3/2 -13 -17 -15

III 1/1 -17

\* III 5/4 -31 +34 -15 11/8 3/2

425

I 1/1 -17 -31 -15 5/4 3/2

II 11/8 1/1 +34 -17 -48 +23 -13 7/4 13/8 9/8

III 13/8 11/8 +34 +23 -15 -31 -13 -15 3/2 5/4 9/8 3/2

\* 5/4 11/8 -31 +34 -48 -17 +23 -13 7/4 13/8 9/8 1/1

**9.1** 13/12

III 16/13 II 4/3 I

-17 -17 +23 -17 -15

1/1 16/13 4/3

429

I 1/1 -15 7/4 +25 -15 +36 -13 11/8 3/2 13/8 1/1

II 3/2 -15 5/4 +10

III 1/1 -17 +34 -13 11/8 9/8

\* 5/4 -31 -13 -31 +34 -15 11/8 3/2 III 9/8 5/4

9.2

III  $\frac{4}{3}$  II  $\frac{4}{3}$  I  
-17 +23 -15 -15  
1/1 13/12 1/1

433 -11 -47 -29  
9/8 7/4 5/4  
+23 1/1 -11 9/8  
-15 -17 +34 +23 -13 9/8  
11/8 13/8 3/2 1/1  
-15 -11 +27 -13  
3/2 I<sup>9/8</sup> II<sup>9/8</sup> II<sup>3/2</sup>

9.3

III  $\frac{11}{8}$  II  $\frac{4}{3}$  I  
-17 -15 +34 -15  
1/1 11/6 1/1

437 -47  
7/4  
-17 1/1  
+34 -47 -11 -29 -13 -47  
7/4 II<sup>9/8</sup> 5/4 3/2 7/4  
III<sup>11/8</sup>

441 +36 -11 -11  
9/8 11/8 9/8  
+50 +34 +36  
6/5 1/1 3/2  
+34 +23 -31 -48 -15 -17  
11/8 13/8 5/4 7/4 3/2 1/1  
+34 +50 +36  
III<sup>11/8</sup> II<sup>6/5</sup> 6/5 I<sup>5/4</sup> 3/2 11/8

*to kill a monarch* (seed:19800725)

9.4

III 11/6 II 11/6 I

-17 -15 +34 -15 +34

4/3 1/1 11/6

(445)

I

II

III

13/8 1/1 3/2

13/8

+25 +36 -11

13/8 11/8 9/8

-47 +34

7/4 III 11/8

\*

453

I

+36 -11 -29 -15 -29 -15 -13

11/8 9/8 5/4 1/1 5/4 1/1 3/2

II

+3 +34 -15 +50 +38 -25 +36 +38 +3 +50 -15 -25

7/4 1/1 11/8 6/5 3/2 9/8 7/4 6/5 11/8 13/8

9/8 13/8 3/2 3/2

III

+36 -29 -13 -15 -47 +25 -15 -29

11/8 5/4 3/2 1/1 7/4 13/8 1/1 5/4

\*

-11 -15 +36 -25

9/8 9/8 III 11/8 II 13/8

-38 II 11/8

**9.6**

III 1/1 II 1/1 I

-15 +34 -15 -15

1/1 11/6 1/1

(457)

I

-47 +25 -11 +36 -15 -13 -47

7/4 13/8 9/8 11/8 1/1 3/2 7/4

II

-15

7 1/1

III

\*

-47 -15 +25 -29 +36

III 7/4 1/1 13/8 5/4 11/8

(461)

I

+25

13/8

II

-47 +36 -15

7/4 11/8 1/1

III

-11 +36 +25 -15 -13 -29 -13 +36 -47

9/8 11/8 13/8 1/1 3/2 5/4 3/2 11/8 7/4

\*

+25 -15 -47 -29 -11 -13

13/8 1/1 7/4 5/4 9/8 3/2

**10.1**

III 13/8 II 11/8 I

-15 -15 +25 -15 +36

1/1 13/8 11/8

(465)

I

II

+25 -29

5/4 13/8

III

\*

+25 -15 +25

13/8 1/1 III 13/8

469

I

II

III

\*

+22 +50

5/4 9/8 8/5

+11 +27 +25 -6 -24 +25 +27 -34 +11 +25 +27 -34

5/4 3/2 1/1 7/4 9/8 11/8 1/1 3/2 13/8

-47

7/4

-47 -13 +11

7/4 I 11/8 II 5/4

10.2

13/11

III 11/8 II 13/8 I

-15 +25 +36 +36 +25

1/1 13/11 13/11

473

I

II

III

\*

+25 -6 +11 +25

1/1 7/4 5/4 1/1

+40 +22 +24

9/8 5/4 15/8

-29 +25 +36 -11

13/8 5/4 11/8 9/8

+50 -34 -6 -13 +25 +22

II 8/5 I 13/8 7/4 III 3/2 13/8 II 5/4

10.3

13/11

III 13/11 II 1/1 I

-15 +25 +36 +25

13/8 1/1 1/1

477

I

II

III

\*

-34 +27 13/8 1/1 1/1 +11

13/8 3/2 5/4

+36 +50

1/1 8/5

+27 +25

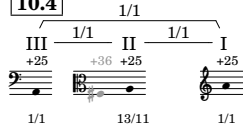
3/2 1/1

+11 +11 -24 +27 -34

I 5/4 III 5/4 11/8 3/2 13/8



10.4



481

I

II

III

\*

+40  
+24  
15/8  
9/8

-6  
7/4

+25 -34  
III 1/1  
13/8

485

I

II

III

\*

+25 +29 +27  
1/1 9/8 3/2

+11 +27 -6 +29 -24  
5/4 3/2 7/4 9/8 11/8 1/1 13/8

-6 +11 +27 +29  
13/8 5/4 3/2 9/8 7/4 11/8

-6 +11  
7/4 5/4 1/1

-6 +29  
7/4 9/8

489

I

II

III

\*

+25 +29  
1/1 9/8

+11  
5/4

-6  
7/4

-6 -34 +11 +25  
7/4 13/8 1/1 5/4

-34 +25 +27 -24 +25 +27  
13/8 1/1 3/2 1/1 11/8 3/2